

# Corona Camera UV-260



**NEW!**

**UV-260 is an innovative NDT - Non Destructive Testing equipment, that detects, pinpoints and documents flash-arc corona and arcing partial discharge camera!**

Being with high sensitivity UV-260 is a power tool to detect UV emission in full daylight with high signals from faraway and nearby sources. UV-260 is an ideal predictive maintenance device for overhead transmission lines and high voltage substations.

UV-260 is newest generation of UV imaging system with an emphasis on high performance functionality and easy operation, it is widely used in transmission line inspection, electrical utilities, HV research institutes, HV electrical component inspection, HV panel inspection, service providers, laboratories and more.

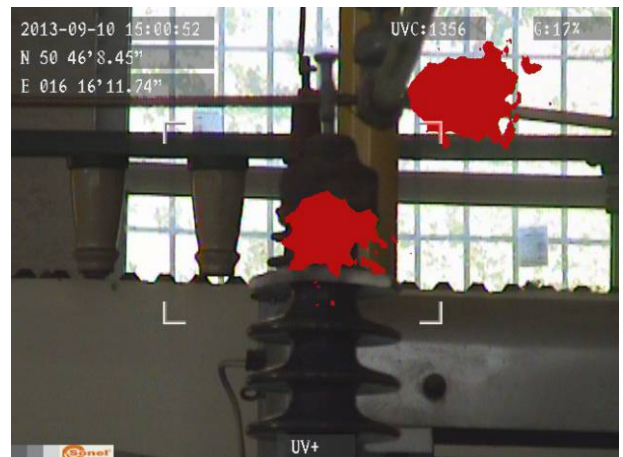
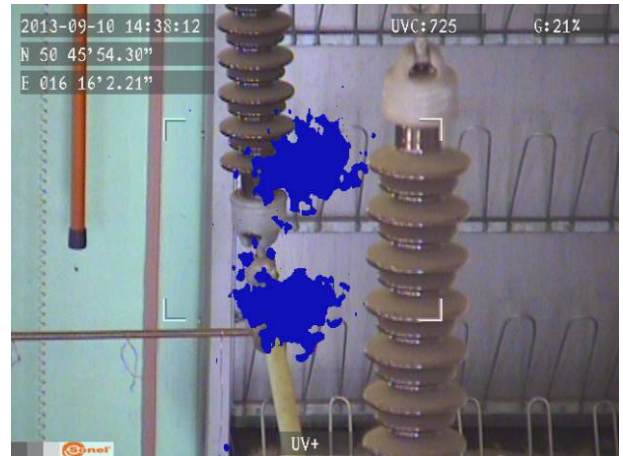
Sonel S.A.  
Wokulskiego 11  
58-100 Świdnica, PL  
tel. +48 74 85 83 860  
fax +48 74 85 83 809

[export@sonel.pl](mailto:export@sonel.pl)  
[www.sonel.pl](http://www.sonel.pl)

- High sensitivity to UV signals
- Precise location of corona emitting sources
- Auto focus of UV and visible channels
- Back ground noise reduction
- 5.7" folding and touchable color LCD
- Voice or LED UV events alarm
- Rapid optical zoom of the visible channel
- Videos & images capturing, recording and playback
- Built-in GPS
- UV events counter
- UV-260 report software for documentation

# CORONA CAMERA UV-260

UV - Optical Properties	
Image Type	Monochrome video
Minimum UV Sensitivity	$3 \times 10^{18}$ watt / cm <sup>2</sup>
Minimum Discharge Detection	1.5pC @ 8 meters
Spectral range	UV 240 ~ 280 nm
Field of View H x V	5.5' × 4.0'
Focus	Full manual and auto for UV and visible channels
Focus distance	2 m. - ∞
Detector Life Span	No degradation
Frequency	50 Hz / 60 Hz
Visible - Optical Properties	
Image Type	Color video
UV/Visible	Better than 1 milliradian
Overlay Accuracy	
Minimum visible light sensitivity	0.1 lux
Zoom factor	26x optical and 12x digital
Display	
Type	5.7" VGA color LCD, folding and touchable
Video Standard	PAL/NTSC switchable
Modes	Combined (UV & visible), UV only, Visible only
Corona Shades	White, Red, Blue
Processing & Communications	
Video standard	H.264
Alarms	LED
Menu	Button operation or touchable operation
Audio	Microphone input for audio notes
GPS	Yes
Data Storage	
Storage Media	SD card
Image Format	JPG
Video Storage	AVI compressed format
Storage Capacity	8000 images, or >4 hours videos
Data download	card reader
Power system	
Power Consumption	10 W
Battery Type	Rechargeable li-ion battery (2 pcs.)
Battery Run Time	2 hours
Charge	Online charging or charger
External supply	9-12 V, 10 VA
Power adapter	110-240 VAC, 50-60 Hz/12 VDC 3.8 A
Others	
Operating temperature	-10°C- 50°C
Storage temperature	-25°C- 60°C
Humidity	95% Non condensing
Size	238 mm x 165 mm X 91 mm
Weight	2,5 kg
Power interface	Yes
SD card slot	Yes
Video output	Yes
Audio input / output	Microphone / Headphones



#### Standard accessories:

- AC power adapter,
- 2pcs Li-ion battery,
- charger, SD card,
- SD card reader,
- video cable,
- car power adapter,
- software CD,
- warranty card,
- strap,
- transport case
- manual