



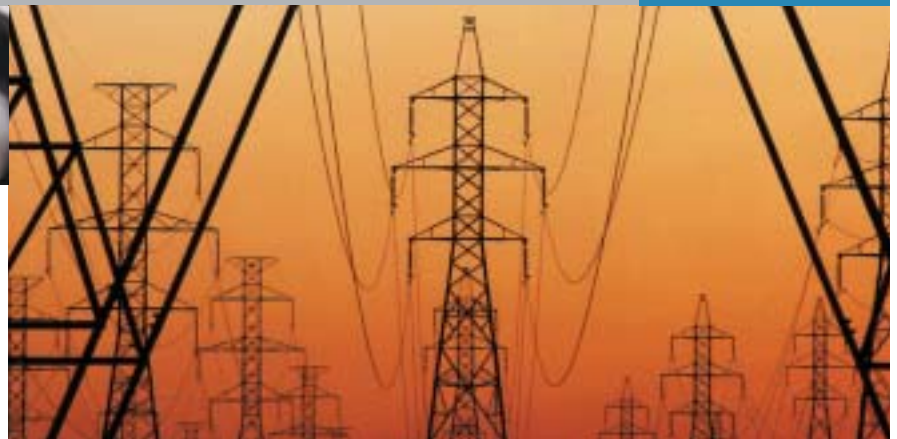
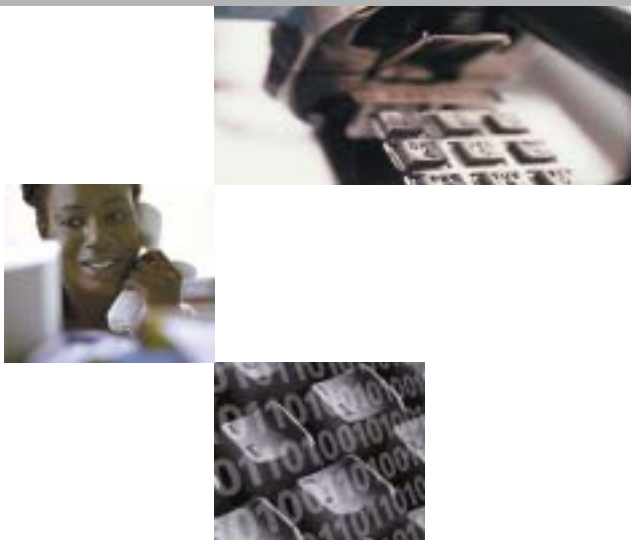
KeyTek ECAT®

Expert Computer-Aided Testing
for pulsed EMI immunity

It's the only EMC test system you'll ever need.

The KeyTek ECAT® is a modular, full capability EMC test system for measuring and analyzing the vulnerability of telecom, electronic, and electrical equipment/ components to pulsed EMI hazards, including EFT, Surge & PQF™ (Power Quality Failure).

A powerful design and production tool, the KeyTek ECAT is the premier EMC test system to meet Telcordia, UL, FCC, and IEC standards. It features a totally integrated modular architecture that enables manufacturers and designers to easily and rapidly test for all pulsed EMI threats including pre-compliance, production sampling and final compliance.



Technical Specifications

KeyTek ECAT® Model E103 Series Control Center



Computer-driven control center and power units required for the operation of any KeyTek ECAT test system

Tests for pulsed EMI hazards:
EFT, Surge, PQF™

Ideal test system to address most applicable EMC & Telecom standards, including CE Mark/IEC standards

Easy-to-use Windows-based application software for quick implementation of international & national test routines

Virtual Front Panel™ retains key operating parameters during set up & testing

Multi-level system interlock architecture provides maximum safety

Single output port/instant mode switching

AC Mains current monitoring

Accurate automatic report generation

Flexible, economically upgradable architecture



Virtual Front Panel™ control

8 x 40 character keyboard entry & LCD display - allows operator to see vital test parameters without list scrolling

FiberCom™ fiber-optic interface & control system

Uses KeyTek ECAT software for full computer control of ECAT test equipment (user-supplied PC running Windows, 8 MB RAM, one serial port)

Module Bay

For one full-width plug-in module or two half-width modules. Up to five additional bays (for a total of six) and/or S-ECAT for floor-standing system available (required for more than three docking bays)

Surge V & I monitor ports

For waveform monitoring with an external (user-supplied) oscilloscope at 1kV/V and 200A/V:V & I signals supplied from optional AC coupler/decoupler or KeyTek ECAT modules/options

Input voltage

100V to 240VAC, 50/60 Hz

Typical input current

3.5A @ 100V; 1.5A @ 240V

Operating temperature

15° to 35° C

Operating humidity

10% to 75% non-condensing

Options

E103-S - adds oscilloscope trigger for installed surge modules

AC input connectors are available for most national and international standards.