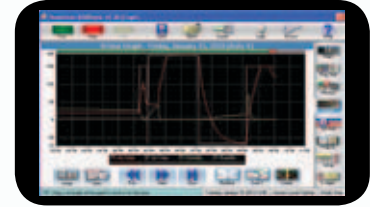
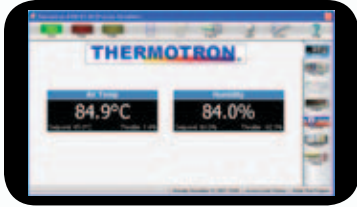




Advanced Test Equipment Rentals
www.atecorp.com 800-404-ATEC (2832)



THERMOTRON®

S/SM-8200 Series Environmental Test Chambers

Ideal for Environmental Testing

Thermotron's S/SM-8200 Series chambers deliver the quality and accuracy you would expect from a premier worldwide supplier of environmental testing equipment. Featuring the 8200 touchscreen programmer/controller, wide temperature and humidity ranges, and multiple chamber sizes, Thermotron's S/SM-8200 Series chamber is the ideal choice for quality and customizable simulated environmental testing.



S/SM-8200 SERIES ENVIRONMENTAL TEST CHAMBERS
(8, 16, and 32 Cubic Foot Models Shown)

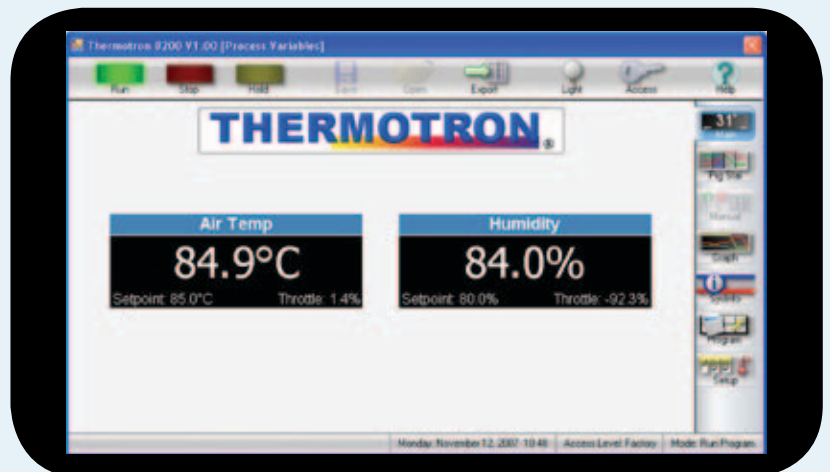
Powerful, Yet Versatile Chambers

S/SM-8200 Series chambers utilize hermetically sealed compressors that provide moderate temperature change rates while consuming less power than comparable chambers. A heated window provides a clear view of the test area that is illuminated by the interior work space light. Casters provide mobility and easy move-in capabilities. Advanced features such as an electronic humidity sensor and product temperature control add value and reduce test time and maintenance.

We understand that protecting your investment is important; that's why a comprehensive service and support program is available for each S/SM-8200 Series chamber sold. Thermotron's warranty backs every chamber sold with access to application engineers, technical support, and nationwide field service technicians, lowering the ongoing cost of ownership.

8200 Touchscreen Controller

Thermotron's S/SM-8200 Series chambers feature the 8200 programmer/controller. Operation and data collection are easy with its high-resolution 7-inch color touchscreen display. The familiar Windows® look and feel supports robust operations. Its unique main screen allows most of the information and interface to be contained on a single screen, eliminating confusing navigation. The graphing screen uses a tap and drag zoom box, allowing you to magnify specific areas on a graph easily.

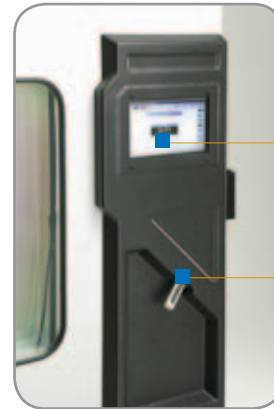
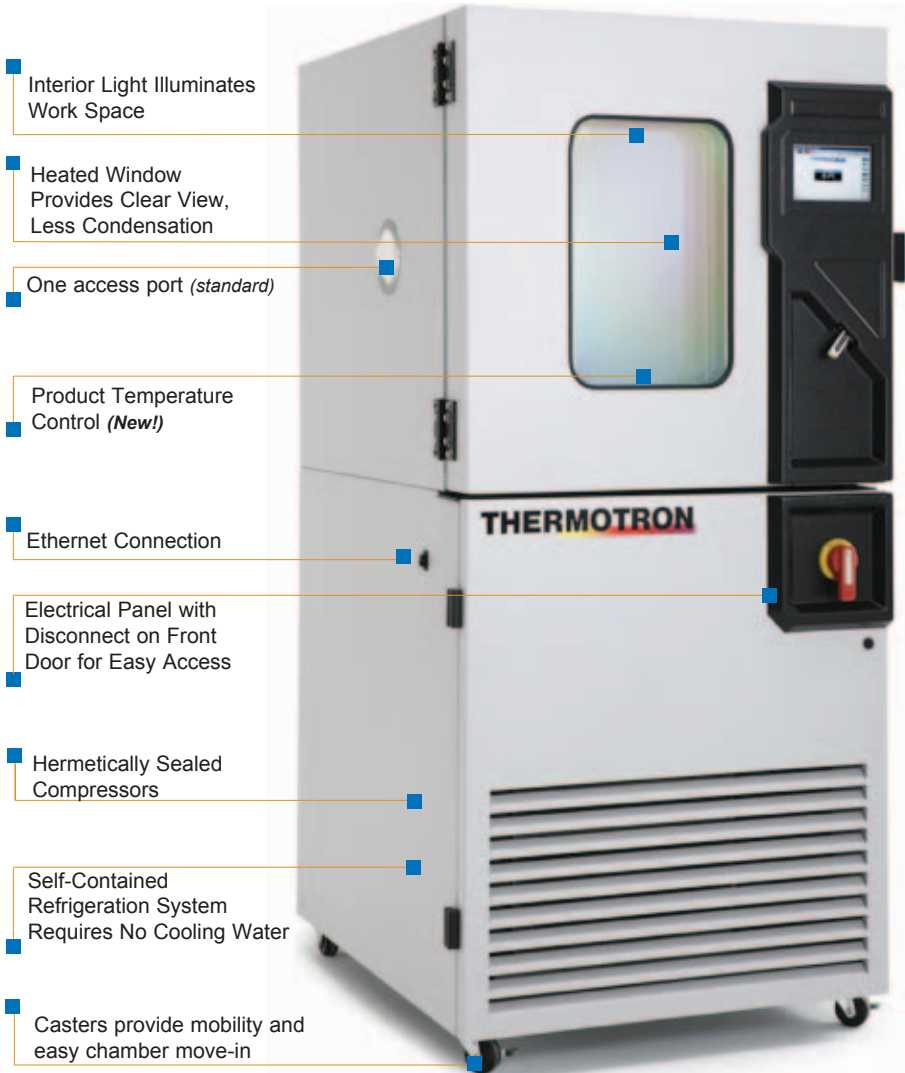


The 8200 features pinpoint accuracy with touchscreen simplicity.

The built-in USB port allows programs to be interchanged between instruments quickly and easily, as well as allowing the export and transfer of test data using a USB flash drive. With built-in Ethernet capabilities, the 8200 has network-wide accessibility. All of these benefits add up to a powerful series of environmental test chambers that meet the requirements of your test.

S-8200 Series

Standard Features and Benefits



USB Port



S/SM-8200

Chamber Options

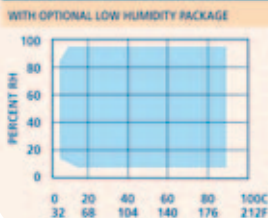
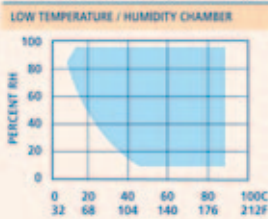
- Add'l Access Ports and shelving
- Auxiliary Event Relay Board
- Cable Notch
- CE and CSA Compliant
- Chart Recorders
- Dry Air or Nitrogen Purge System
- GPIB or RS-232/485 Computer Interface
- Humidity Water Purification and Recirculation System
- Inner Glass Doors
- Low Humidity System
- Liquid Nitrogen or CO₂ Boost/ Back-Up Cooling System
- Refrigeration Gauges
- ThermAlarm™
- ThermoTrak II™ Software
- Water-cooling

**Specifications subject to change. The addition of accessories may affect performance. Certain options may increase move-in dimensions.*

S-8200 SERIES TEMPERATURE CHAMBER SPECIFICATIONS

Model	S-4-8200	S-8-8200	S-16-8200	S-27-8200	S-32-8200	
Interior Dimensions — WxDxH Inches Centimeters	20x20x20 51x51x51	24x24x24 61x61x61	30x30x30 76x76x76	36x36x36 91x91x91	38x38x38 97x97x97	
Cubic Volume — Ft/Liters	4/113	8/227	16/453	27/764	32/906	
Exterior Dimensions — WxDxH Inches Centimeters	31x42x68 79x107x173	35x49x73 89x124x185	45x59x81 114x150x206	51x65x88 130x165x224	53x68x90 135x173x229	
Temperature Range	-70°C to +180°C (-94°F to +356°F)					
Temperature Control Tolerance	All Models 0.3°C (0.5°F)					
Temperature Uniformity	All Models 0.7°C (1.1°F)					
Weight — Lbs/Kg	700/318	800/363	1,320/599	1,800/816	1,975/896	
Compressor Size	1-1	1-1	2-2	2-2	2-2	2-3
Cooling Change Rates — Min +180°C to -65°C (+356°F to -85°F) +71°C to -65°C (+160°F to -85°F) +85°C to -40°C (+185°F to -40°F)	50 30 14	66 44 26	68 50 28	85 58 39	93 65 45	68 48 21
Heating Change Rates — Min -65°C to +180°C (-85°F to +356°F) -65°C to +71°C (-85°F to +160°F) -40°C to +85°C (-40°F to +185°F)	27 11 10	42 16 15	52 22 20	66 27 25	71 30 28	38 12 10
Live Load Capacity — Watts -18°C (0°F) -40°C (-40°F) -54°C (-65°F)	600 400 300	550 350 200	1,000 700 400	1,000 700 400	1,000 700 400	1,500 1,050 600
Electrical Service — Amps 230/1/60 230/3/60 460/3/60 220/1/50 400/3/50	(full load) 27 21 — 25 12	(full load) 25 19 — 24 11	(full load) 46 33 — — 17	(full load) 46 33 — — 17	(full load) 46 33 — — 17	(full load) — 47 24 — 24
Noise Level† — dBA Heating/Cooling	60/68	60/68	60/70	60/70	60/70	60/70

SM-8200 SERIES HUMIDITY RANGE



SM-8200 SERIES TEMPERATURE/HUMIDITY CHAMBER SPECIFICATIONS

Model	SM-8-8200	SM-16-8200	SM-27-8200	SM-32-8200	
Interior Dimensions — WxDxH Inches Centimeters	24x24x24 61x61x61	30x30x30 76x76x76	36x36x36 91x91x91	38x38x38 97x97x97	
Cubic Volume — Ft/Liters	8 / 227	16 / 453	27 / 764	32/906	
Exterior Dimensions — WxDxH Inches Centimeters	35x49x73 89x124x185	45x59x81 114x150x206	51x65x88 130x165x224	53x68x90 135x173x229	
Temperature Range	-68°C to +180°C (-90°F to +356°F)				
Temperature Control Tolerance	All Models 0.3°C (0.5°F)				
Temperature Uniformity	All Models 0.7°C (1.1°F)				
Weight — Lbs/Kg	875/397	1,395/633	1,875/851	2,050/930	
Humidity Range *	All Models 10% to 98% RH				
Humidity Control Tolerance **	All Models 2.5% RH				
Humidity Uniformity ***	All Models 1% RH				
Compressor Size	1-1	2-2	2-2	2-2	2-3
Cooling Change Rates — Min +180°C to -65°C (+356°F to -85°F) +71°C to -65°C (+160°F to -85°F) +85°C to -40°C (+185°F to -40°F)	72 54 32	80 54 31	98 64 42	106 71 48	74 51 23
Heating Change Rates — Min -65°C to +180°C (-85°F to +356°F) -65°C to +71°C (-85°F to +160°F) -40°C to +85°C (-40°F to +185°F)	43 17 16	54 22 21	68 28 26	73 31 29	40 13 11
Live Load Capacity — Watts -18°C (0°F) -40°C (-40°F) -54°C (-65°F)	550 350 200	1,000 700 400	1,000 700 400	1,000 700 400	1,500 1,050 600
Electrical Service — Amps 230/1/60 230/3/60 460/3/60 220/1/50 400/3/50	(full load) 25 19 — 27 11	(full load) 46 33 — — 21	(full load) 46 33 — — 21	(full load) 46 33 — — 21	(full load) — 53 27 — 24
Noise Level† — dBA Heating/Cooling	60/68	60/70	60/70	60/70	60/70

THERMOTRON

291 Kollen Park Drive
Holland, Michigan, USA 49423
Marketing: (616) 393-4580
Main: (616) 392-1491
Fax: (616) 392-5643
E-mail: info@thermotron.com

Thermotron Industries, U.K.
Newton House
Winch Road
Kent Science Park
Sittingbourne, Kent
ME9 8EF England
Phone: 01795 436333
Fax: 01795 436777
Email: sales@thermotron.co.uk
www.thermotron.com

* Limited by a +7°C (+45°F) minimum dew point temperature and a maximum dry bulb temperature of +88°C (+190°F). Relative humidity indication at or near the physical limits may be affected by sensor accuracy and control tolerance.

** At a dry bulb temperature above +20°C (+68 °F).
*** Based upon temperature uniformity specifications.

† Noise Level: A-weighted sound pressure level measured at a distance of 1.0 meter (39.4 inches) from the surface of the equipment at a height of 1.6 meters (63 inches) from the floor in free-field conditions, using a calibrated instrument.

Performance is based upon 60Hz and 23.9°C (75°F) ambient air, and may vary slightly at other ambient temperatures. Chambers are designed for use under normal laboratory operating conditions. For other applications, please consult Thermotron.