

**Asterion**  
Performance. Reliance. Brilliance.

*The Future of  
AC Power Sources.*



## California Instruments Asterion™ Programmable AC, DC & AC + DC Power

(500 VA – 18000 VA, 200 / 400 Vac, 250 / 500 Vdc)

### Performance. Reliance. Brilliance.

Inspired by the enduring power of a brilliant star, the new California Instruments Asterion line of AC power sources by AMETEK Programmable Power combines intelligence and flexibility to create an entirely new platform of AC solutions. This easy-to-configure design features sophisticated technology for delivering high performance, programmable AC and DC power. Its sleek design packs maximum power density into a low-profile form factor with an intuitive touch screen interface placing that power at your fingertips. Centralized control and unparalleled modularity make Asterion the most adaptable platform on the market. Its ground-breaking capabilities set a new standard for affordable, precision power sources.

A star is born. **Introducing Asterion.**



### Advantages:

- Maximize rack space utilization with leading AC power density in 1U/2U chassis.
- Full output power over widest voltage range with iX2™ technology.
- Quickly and expertly control AC source with intuitive touch screen.
- 1U models - single phase;  
2U models - 1 or 3 phase selectable.

### Advanced Features:

- High power density in 1U/2U chassis up to 3kVA.
- Intuitive touch panel control.
- Innovative iX2™ current doubling technology.
- Multi-language display for global operation.
- Auto paralleling for higher power.
- Combine units for multiple phase configurations.
- Complete avionic test suites (optional).
- ATE version available.

### Applications:

- Commercial and military avionics test.
- AC power simulation.
- ATE applications.
- Manufacturing and process control.
- Frequency and voltage conversion.
- IEC standards testing.

# Asterion AC Series: Product Specifications & Details

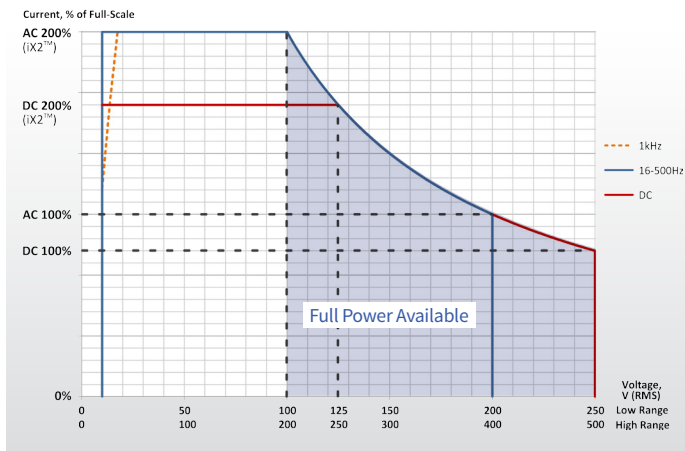
AC/DC Output Specifications					
Model	AST501 - 1U	AST751 - 1U	AST1501 <sup>3</sup> / AST1503 - 1U/2U	AST2253 - 2U	AST3001 <sup>3</sup> / AST3003 - 2U
Output Power	500VA (500W) 1Φ <sup>1</sup>	750VA (750W) 1Φ <sup>1</sup>	1500VA (1500W) 1Φ/3Φ <sup>1</sup>	2250VA (2250W) 1Φ/3Φ <sup>1</sup>	3000VA (3000W) 1Φ/3Φ <sup>1</sup>
AC RMS Voltage Ranges	0-200V/0-400V	0-200V/0-400V	0-200V/0-400V	0-200V/0-400V	0-200V/0-400V
AC RMS Current per phase at Max V Range	2.5A/1.25A (1Φ mode)	3.75A/1.875A (1Φ mode)	7.5A/3.75A (1Φ mode) 2.5A/1.25A (3Φ mode)	11.25A/5.625A (1Φ mode) 3.75A/1.88A (3Φ mode)	15A/7.5A (1Φ mode) 5.0A/2.5A (3Φ mode)
iX2 AC RMS Current per phase	(1Φ mode) 5A to 100V in 200V Range; 2.5A to 200V in 400V Range	(1Φ mode) 7.5A to 100V in 200V Range; 3.75A to 200V in 400V Range	(1Φ mode) 15A to 100V in 200V range; 7.5A to 200V in 400V Range (3Φ mode) 5.0A to 100V in 200V range; 2.5A to 200V in 400V Range	(1Φ mode) 22.5A to 100V in 200V range; 11.25A to 200V in 400V Range (3Φ mode) 7.5A to 100V in 200V range; 3.75A to 200V in 400V Range	(1Φ mode) 30A to 100V in 200V range; 15A to 200V in 400V Range (3Φ mode) 10A to 100V in 200V range; 5A to 200V in 400V Range
DC Voltage Ranges	0-250V/0-500V	0-250V/0-500V	0-250V/0-500V	0-250V/0-500V	0-250V/0-500V
DC Current per phase at Max V Range	2.0A/1.0A (1Φ mode)	3.0A/1.5A (1Φ mode)	6.0A/3.0A (1Φ mode) 2.0A/1.0A (3Φ mode)	9.0A/4.5A (1Φ mode) 3.0A/1.5A (3Φ mode)	12.0A/6.0A (1Φ mode) 4.0A/2.0A (3Φ mode)
iX2 - DC Current per phase	(1Φ mode) 4A to 125V in 250V Range; 2.0A to 250V in 500V Range	(1Φ mode) 6A to 125V in 250V Range; 3.0A to 250V in 500V Range	(1Φ mode) 12A to 125V in 250V Range; 6A to 250V in 500V Range (3Φ mode) 4.0A to 125V in 250V range; 2A to 250V in 500V Range	(1Φ mode) 18A to 125V in 250V Range; 9.0A to 250V in 500V Range (3Φ mode) 6.0A to 125V in 250V range; 3A to 250V in 500V Range	(1Φ mode) 24A to 125V in 250V Range; 12A to 250V in 500V Range (3Φ mode) 8.0A to 125V in 250V range; 4A to 250V in 500V Range
Common Specifications					
Input Voltage Operating Range	90-264VAC <sup>2</sup>	Control Interfaces	LAN, USB, RS232. Analog/EXTD Standard, GPIB Optional	Power Factor, Typical	0.98 (typical); active PFC, 50/60Hz nominal line
Input Frequency	47-440 Hz	Output Operational Modes	AC, AC + DC, DC	Output Frequency	DC, 16Hz - 1000Hz standard, 5000Hz optional

<sup>1</sup> Easily combine chassis for higher power. <sup>2</sup> See manual for output power ratings vs input voltage.

<sup>3</sup> AST1501 & AST3001 are single phase only. See AST1503 & AST3003 for 1 or 3 phase selectable.

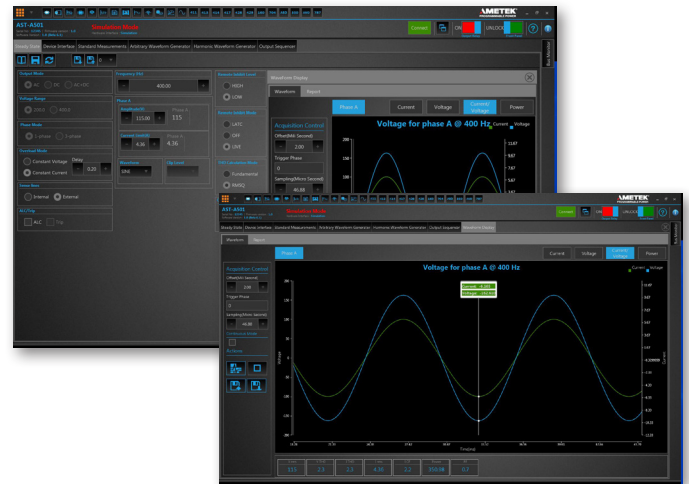
## Asterion Output Current Rating for 16Hz and DC

See Data Sheet for Ratings > 1kHz to 5kHz



All Asterion sources employ AMETEK's latest current enhancing technology, iX2™. iX2 current doubling technology enables output current to increase linearly up to two times the full voltage current as the voltage decreases from range maximum to one-half of range voltage. iX2 technology results in a source that **DELIVERS FULL POWER OVER THE WIDEST VOLTAGE RANGES!** This eliminates the need to buy overpowered sources just to reach low line current requirements.

## Virtual Panels



Virtual Panels allow remote control of the Asterion AC power source as well as programming communication and monitoring for the Asterion ATE model without front panel display.

Avionics Test



Power Simulation



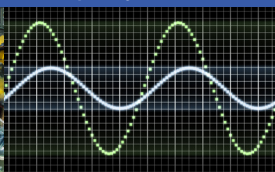
ATE Applications



Manufacturing



Frequency Conversion



IEC Standards Testing

