



# OptiView™ Reporter Software



## Performance reports for local network segments.

### Baseline information is key to consistent network performance.

As a network manager, if you don't know what constitutes normal operation for your network, how will you know when minor irregularities signify major problems to come? The best way to define normal operation for your network is to collect and plot statistical data about the network. This data, often referred to as a **baseline report**, should include a breakdown of network activity, as well as profile statistics about the network users. Once you establish a reference point for normal operation, you can regularly monitor the network and compare the results against the reference point to analyze trends and detect any significant

deviations. The baseline report is also valuable during troubleshooting because it quickly isolates the "change" that has occurred to cause the problem.

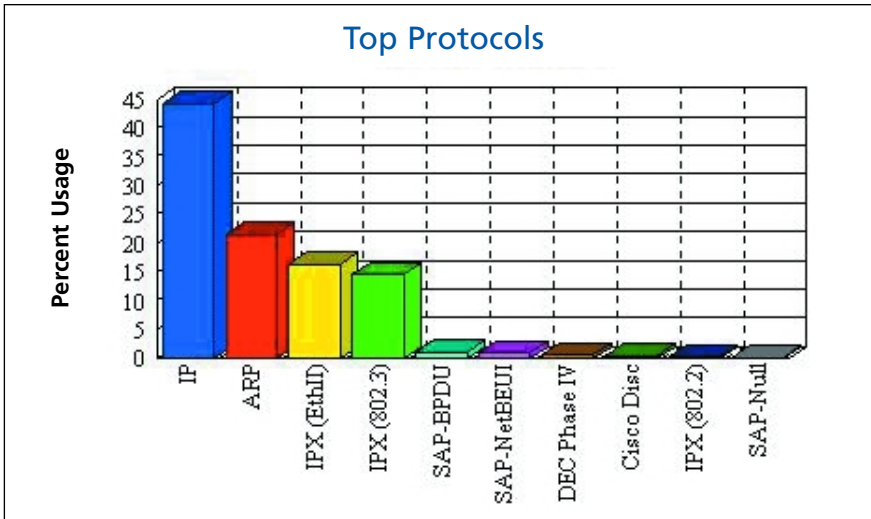
### Introducing Fluke Networks OptiView™ Reporter Software.

Now there's an easy way to create baseline reports that will help you make informed decisions about your network. Fluke Networks OptiView Reporter Software operates with Fluke Networks OptiView Integrated Network Analyzer to quickly generate baseline reports that reflect your network's status. Simply launch the OptiView Reporter Application and select the IP address of the OptiView Integrated Network Analyzer that you want to use to generate reports.

**Fluke Networks OptiView™ Reporter Software gives you the data you need to make informed decisions about your network.**

- Access OptiView data remotely
- Immediate or delayed acquisition modes
- Generates network performance reports in HTML format such as:
  - IP Inventory reports on devices including IP Address, MAC Address, and Domain Name
  - NetBIOS Inventory report on devices including IP Address, MAC Address, NetBIOS and Domain Names
  - Top Protocols and Applications by host
  - Distribution of protocols present by frame count graph, and usage
  - Ethernet Network Usage trend graph including Average Network Bandwidth Consumption, Average Frame Rate and Average Frame size
  - Ethernet Collision Summary trend graph including Ethernet Traffic
  - Ethernet Network Segment Errors trend graph; including Collisions, Bad FCS, Jabbers, Short Frames
  - Top Network Traffic Senders, Receivers and Broadcasters

**Get a clear view of network performance, and catch problems before they happen.**



Protocol	Usage	Frames
ARP	54.8%	31113
IP	22.3%	12664
IPX 802.3	11.0%	6223
Spanning Tree	3.3%	1896
Other	2.5%	1445
DEC Phase IV	2.2%	1234
NetBEUI	1.6%	880
Cisco Discovery	0.8%	442
IPX EthII	0.5%	276
IPX 802.2	0.5%	272
IPX SNAP	0.5%	268
DEC MOP	0.0%	13

**Protocol Mix** reports captures the protocol present on the network segment. The bar graph in the report shows the ranking of each protocol by frame count. The report further lists the percent usage for each protocol.

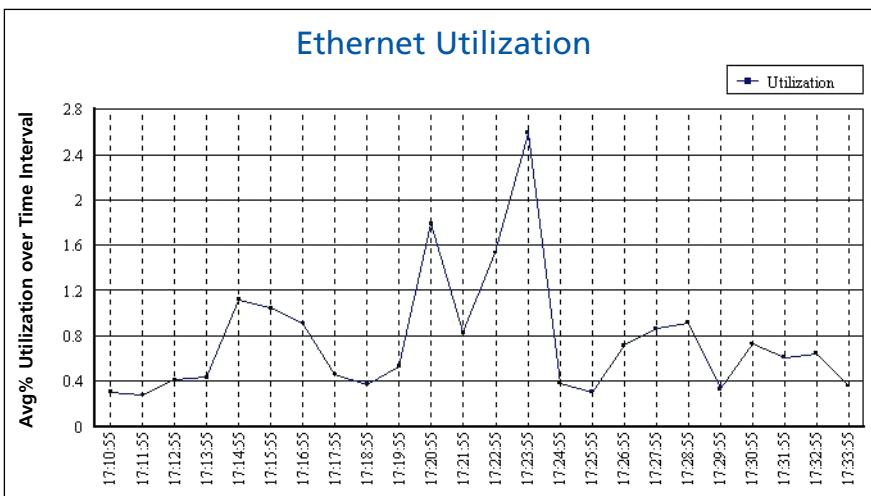
### Baseline report samples

**Inventory Reports for IP or NetBIOS** list the active devices running the protocol. These reports list the MAC addresses, IP addresses and the DNS or NetBIOS names of the stations. They also list the services the stations provide, such as DNS, DHCP, and SNMP in the case of IP stations, and Primary Domain Control or Master Browser for NetBIOS. These reports provide unparalleled benefits when trying to understand the stations, services and protocols present on a network segment.

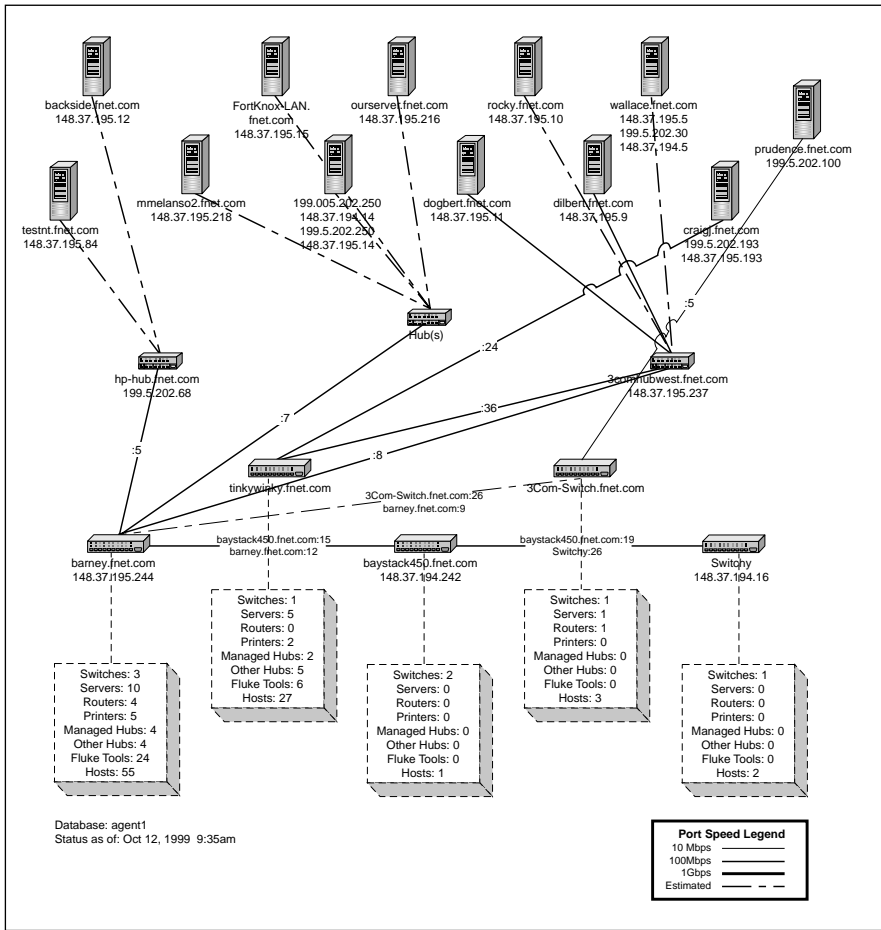
**Top Protocols and Applications by Host** lists the top 10 protocols and applications and shows the top 50 hosts using that protocol.

**Protocol Mix reports** provide information on the protocols detected on the network segment. The bar graph in the report shows the ranking of each protocol by frame count, and further lists the percent usage for each protocol.

**Ethernet Network Usage** displays the average network utilization over a selected time interval. The charts in the reports depict trending data by average utilization over trend intervals.



**Ethernet Network Usage** lists the average network utilization over time intervals. The charts in the reports depict trending data by average utilization over trend intervals.



Server connections in a switched network

**Network Inspector™, OptiView Edition**

The OptiView Reporter is included as a standard feature in the OptiView Edition of Fluke's Network Inspector Software. Designed for Ethernet LANs, the Windows-based Network Inspector actively monitors and diagnoses problems in TCP/IP, IPX®, and NetBIOS® environments. The Network Inspector:

- Discovers all network devices in less than ten minutes, including DNS names, IP Address, IPX Address and MAC Address.
- Monitors and trends utilization, errors, broadcasts, and collisions hourly and daily on ports of all managed devices.

- Detects device interface configuration including speed, type, MTU, and slot and port numbers.
- Continuously logs errors and changes on network devices.
- Recommends solutions to network problems.
- Generates web-based network inventory reports on devices and most heavily used switch and router ports.
- Automatically exports information into a Visio diagram, including device inter-connections on a port-to-port basis.

**System Requirements**

**Computer Requirements:**

- Windows® 2000, Windows® 98, Windows® 95, or Windows NT® 4.0 (Service Pack 3 or higher)
- Microsoft TCP/IP stack
- 200 MHz Pentium II processor
- 64 MB RAM
- 150 MB virtual memory
- 100 MB hard disk space
- Winsock 2.0 (Required only for Network Inspector, OptiView Edition)

**OptiView Requirements**

- OptiView Integrated Network Analyzer (all versions)

**Ordering Information**

Model	Description
OPV-RPT	OptiView Reporter Software Package
NIS-OPV	Network Inspector, OptiView Edition

**NETWORK SUPERVISION**

**Fluke Networks, Inc.**  
P.O. Box 9090, Everett, WA USA 98206

**Fluke Europe B.V.**  
P.O. Box 1186, 5602 BD Eindhoven, The Netherlands

**For more information call:**  
U.S.A. (800) 283-5853 or Fax (425) 446-5043  
Europe/M-East/Africa (31 40) 2 675 200 or Fax (31 40) 2 675 222  
Canada (800) 36-FLUKE or Fax (905) 890-6866  
Other countries (425) 446-4519 or Fax (425) 446-5043  
E-mail: fluke-assist@flukenetworks.com  
Web access: http://www.flukenetworks.com

©2000 Fluke Networks, Inc. Pentium is a registered trademark of Intel Corporation. Visio, Windows and NT are registered trademarks of Microsoft Corporation. IPX is a registered trademark of Novell Corporation. NetBIOS is a trademark of International Business Machines Corporation. All rights reserved. 9/2000 1590858 D-ENG-N Rev. A