

**Megger.**

**Ferrolux**  
Systematic line and fault location

## Ferrolux Systematic line and fault location



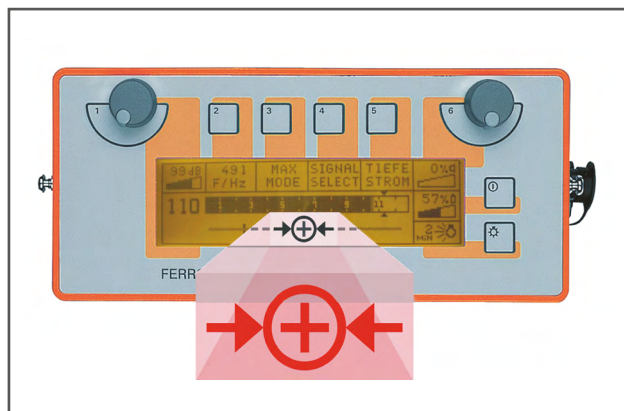
- **Precise direction guidance with right/left arrows**
- **“SignalSelect” for clear route location**
- **Depth and signal current intensity measurement at the push of a button**
- **Route sensor weighs less than 1 kg for non-tiring use**
- **“DirectSignal” for effective line location**

### DESCRIPTION

The Ferrolux location system is the solution for your day-to-day tasks. You can use the system to quickly and easily find cable faults. You can locate lines just as quickly, measure how deep they are and save data including GPS co-ordinates in the memory.

The route sensor for location tasks weighs less than 1 kg, which means you can use it for lengthy periods without getting tired.

Special features such as the SuperMax Signal, DirectSignal and SignalSelect make your job easier and the results more accurate.



### SignalSelect

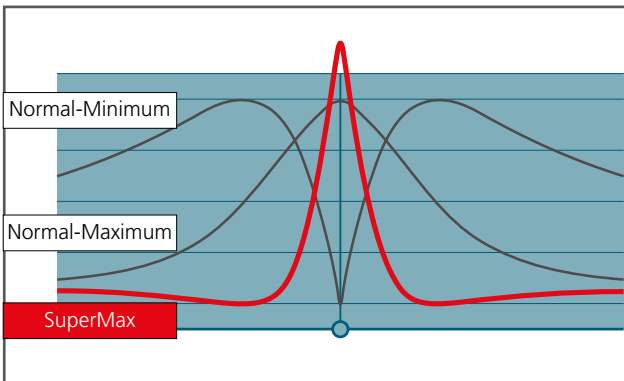
SignalSelect is a patented method for finding the direction of a signal on a line, and greatly increases the certainty and efficiency of route location. This method is particularly useful in areas where several systems are in close proximity.

The Ferrolux generators produce a specially encoded audio frequency signal, which is fed in directly or inductively. The FLE 10 / FS 10 receiver system selects the signal via the target line and identifies the direction of signal flow.

- Clear display
- →⊕← Signal flow from the generator to the remote end
- →⊖← Signal flow from the remote end to the generator
- Independent of line length
- For any type of line (cable, pipe)
- Inductive or direct signal connection

**SuperMax**

The existing Maximum method is relatively inaccurate, and has therefore mostly used for ground surveys. The Ferrolux FLE 10 / FS 10 receiver system combines the conventional Maximum and Minimum methods to achieve a new, improved method called SuperMax. Even relatively untrained operators can use this method to achieve excellent location results.



■ **Maximum method**

*Advantage:* optimum reception via the line  
*Drawback:* very broad location range

■ **Minimum method**

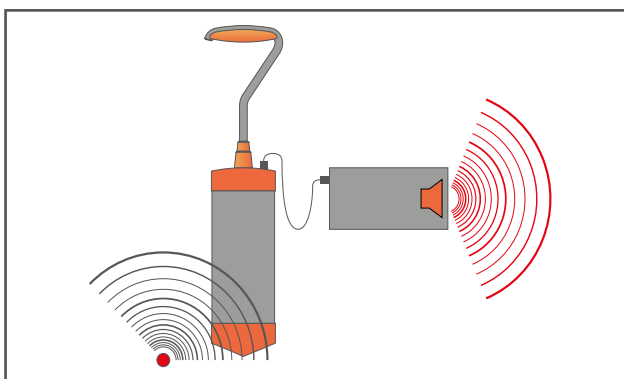
*Advantage:* very accurate location  
*Drawback:* very susceptible to asymmetric field geometry

■ **SuperMax method**

Very accurate location with an optimum signal via the line and no signal beside the line

**DirectSignal**

An analogue reception signal is directly audible through the internal loudspeaker or headphones. Listening to the reception signal increases available information, and supports the visually displayed information on the receiver, facilitating effective line location. There are separate knobs for setting the signal amplification and volume.

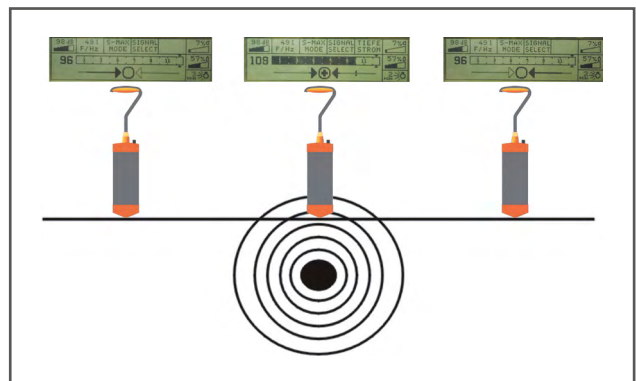


- Directly audible analogue reception signal
- Highly sensitive antennas for signal reception
- Filtering and adjustment for the optimum audible range

**Directional left/right guidance**

The arrows show you whether to move the FS 10 route sensor to the left or right in order to keep it directly over the line. The arrow shaft shortens the closer you are to the line.

A marking across the arrow shaft appears when the FS 10 route sensor reaches a 45° angle to the side to the line.



- Clear direction display
- Distance-based direction display
- Clear indication when the user is standing over the line

**FLE-I Log PC software**

The I-Log software allows you to import the route data stored in the Ferrolux receiver. Combined with the optional GPS module, it provides precise data on the route, detected faults and their positioning.

**TECHNICAL DATA\***



Generators	FLG 10	FLG 50	FLG 200
<b>Output power</b>	0 ... 10 Watt	0 ... 50 Watt	0 ... 200 Watt
<b>Increment</b>	0.5 Watt	2.5 Watt	10 Watt
<b>Output frequencies</b>	491 Hz / 982 Hz / 8440 Hz	491 Hz / 982 Hz / 8440 Hz	491 Hz / 982 Hz / 8440 Hz
<b>Custom frequencies available (&lt;10 kHz)</b>	yes	yes	yes
<b>Operating temperature</b>	-20 °C ... +50 °C	-20 °C ... +50 °C	-20 °C ... +50 °C
<b>Protection class</b>	IP 54	IP 54	IP 20
<b>Dimensions</b>	250 x 120 x 170 mm	410 x 175 x 335 mm	450 x 320 x 133 mm
<b>Weight</b>	2.9 kg	14 kg	12 kg
<b>SignalSelect</b>	yes	yes	yes
<b>Measuring functions</b>	Loop impedance Voltage Current	Loop impedance Voltage Current	Loop impedance Voltage Current
<b>Power supply</b>	NiMh 12 V / 4 Ah	Lead gel battery 12 V / 12 Ah	100 ... 240 V AC
<b>Operating time</b>	approx. 2.5 h at 10 Watt	approx. 6 h	Mains operation only
<b>Impedance adjustment</b>	0.5 ... 1024 Ω	0.5 ... 1024 Ω	0.5 ... 1024 Ω

**Audio frequency receiver FLE 10**

<b>Receiver frequencies</b>	
<b>passive</b>	50 Hz / 60 Hz / 100 Hz / 120 Hz
<b>active</b>	491 Hz / 982 Hz / 8440 Hz
<b>Dynamic range</b>	referred to a cable depth = 1 m
<b>50 HZ</b>	10 mA ... 10,000 A      120 dB
<b>491 Hz</b>	400 µA ... 400 A      120 dB
<b>982 Hz</b>	180 µA ... 180 A      120 dB
<b>8440 Hz</b>	20 µA ... 20 A      120 dB
<b>Depth measurement</b>	0.1 m ... 7 m (active frequencies only)
<b>Current measurement</b>	1 mA ... 400 A / 180 A / 20 A
<b>Power supply /</b>	Alkaline batteries 4 x LR 6      > 20 h
<b>Operating time</b>	NiCd/NiMh 4 x R 6      > 13 h
<b>Dimensions (W x H x D)</b>	
<b>FLE 10</b>	220 x 100 x 110 mm
<b>FS 10</b>	550 x 100 x 40 mm (without handle)
<b>Weight</b>	
<b>FLE 10</b>	approx. 1.5 kg
<b>FS 10</b>	approx. 0.9 kg
<b>Temperature range</b>	-20 °C ... +55 °C

**ALL THE ADVANTAGES OF THE FERROLUX GENERATORS AT A GLANCE**

- Automatic impedance adjustment
- Automatic or manual frequency selection
- Multi-frequency operation – transmits three frequencies simultaneously
- Displays output voltage which is dangerous to touch
- Overload protection/display

## SPECIAL ACCESSORIES



Step voltage sensor with three frequencies



Separation filter 10 W



Cable selection drum



Transmitter coil 8440 Hz



Standard headphones



Transmitter clamp 100 mm



Audio Frequency Coupler Set for FLG 200



Transmitter clamp 50 mm



Flexible universal tongs

Further information about probes or pipeline sondes and additional accessories can be found in the brochure „Fibreglass location cables and probes“.

### ORDER INFORMATION

Product	Order-No.
<b>FL 10-Set</b> <b>Ferrolux System with 10 W Transmitter incl. Signal Select</b> <ul style="list-style-type: none"> <li>■ FLE 10 Receiver with Signal Select Function                             <ul style="list-style-type: none"> <li>+ Search coil, Set of cables, Headphones</li> </ul> </li> <li>■ FLG 10 AF-Generator 10 W with Signal Select Function                             <ul style="list-style-type: none"> <li>+ Connection cables, Charger</li> </ul> </li> </ul>	<b>813123</b>
<b>FL 50-Set</b> <b>Ferrolux System with 50 W Transmitter incl. Signal Select</b> <ul style="list-style-type: none"> <li>■ FLE 10 Receiver with Signal Select Function                             <ul style="list-style-type: none"> <li>+ Search coil, Set of cables, Headphones</li> </ul> </li> <li>■ FLG 50 AF-Generator 50 W with Signal Select Function                             <ul style="list-style-type: none"> <li>+ Connection cables in soft carry bag</li> </ul> </li> </ul>	<b>813134</b>

\* We reserve the right to make technical changes.

## ORDER INFORMATION

Product	Order-No.
<b>Ferrolux Receiver</b> ■ FLE 10 Receiver with Signal Select Function + Search coil, Set of cables, Headphones	820003626
<b>FLG 200</b> <b>Audio-Frequency Generator 200 W portable incl. Signal Select</b> ■ FLG 200 Transmitter with Signal Select Function + FLG 200 Transmitter with Signal Select Function, Set of cables	820000072
<b>Accessories</b>	
Standard headphones (standard equipment)	899003874
Reel with 25 m lead (contact proof)	810002785
Reel with 100 m lead (contact proof)	810002784
Step voltage sensor with three frequencies	899005110
Cable selection drum	899003640
Transmitter coil 8440 Hz for FLG 10	810695
Separation filter 10 W	820008823
Transmitter clamp 50 mm	810000093
Transmitter clamp 100 mm	810003540
Transmitter connection lead for UZ 100	810002164
Flexible universal tongs UZF 150	810003542
Threading device for UZF 150	810668
Transmitter coil 9820 Hz	810394
Case for FL 10 complete and FL 10 single receiver	810002598
Vehicle charging lead for FLG 10	810000019
Vehicle charging lead for FLG 50	810000006
HDR 10-T	128311960
Audio Frequency Coupler - Set 10 W for FLG 200 HDR 10-T-K Coupler, HDR 10-T-GS Audio-Frequency Generator protection, Set of cables, Tripod	

\* We reserve the right to make technical changes.

### SALES OFFICES

Megger GmbH  
 Obere Zeil 2  
 D-61440 Oberursel  
 Germany  
 T 0049 6171 92987-0  
 E info@megger.de

Seba Dynatronic  
 Mess- und Ortungstechnik GmbH  
 Dr.-Herbert-Iann-Str. 6  
 96148 Baunach  
 Germany  
 T 0049 9544 68-0  
 E team.international@megger.de

### FL10\_DS\_EN\_V02b

www.megger.com  
 ISO 9001

The word 'Megger' is a registered trademark.

