

DC Voltage Simple Logger® Models L410 & L430



Specifications

ELECTRICAL

Number of Channels: One

Measurement Range:
0 to 100mVDC (L410)
0 to 10VDC (L430)

Input Impedance: L410 and L430: 1MΩ

Input Connection:
Recessed safety 4mm banana jacks

Resolution: 8 Bit
L410: 50μV max
L430: 5mV max

Accuracy*: ±1% of Reading + Resolution
(see inside back cover for details)

Sample Rate: 4096/hr maximum

Storage Technique:
Time Extension Recording™ (TXR™)

Data Storage: 8192 readings

Power: 9V Alkaline battery

Battery Life:
Up to one year of recording @ 25°C

Output: RS-232 via DB-9 connector

Indicators: Red LED flashes once every two seconds in STANDBY mode, twice every two seconds in LOGGING mode, and is off in OFF mode

Controls: One button used to start and stop recording sessions and to turn the data logger on and off

Working Voltage: 30VAC maximum

MECHANICAL

Size: 27/8 x 25/16 x 15/8"
(73 x 59 x 41mm)

Weight: (with battery) 5 oz (140g)

Mounting: Base plate mounting holes or Velcro® pads supplied loose

ENVIRONMENTAL

Operating Temperature:
-4 to +158°F (-20 to +70°C)

Storage Temperature:
-4 to +174°F (-20 to +80°C)

Relative Humidity:
5 to 95% non-condensing

Safety: EN 61010, 30V Cat. III

Features

- Two models to choose from:
Model L410
0 to 100mVDC
Model L430
0 to 10VDC
- Programmable scales via software
- Programmable units via software
- Inputs via color-coded safety banana jacks
- RS-232 output
- One button operation
- Accuracy : ±1% of Reading + Resolution

Applications

- Circuit design troubleshooting
- Sensor monitoring
- Battery testing
- Power supply profiling

ORDERING INFORMATION

CATALOG NO.

Simple Logger® Model L410 (DC Voltage, 0 to 100mVdc Input) Cat. #2114.05

Simple Logger® Model L430 (DC Voltage, 0 to 10Vdc Input) Cat. #2114.07

All DC voltage Simple Loggers® are supplied with software (CD-ROM), 6 ft DB-9 RS-232 serial cable, 9V Alkaline battery and user manual

Accessories

Voltage Leads, (2) with clips, 5 ft. Cat. #2118.51

Simple Logger® Software

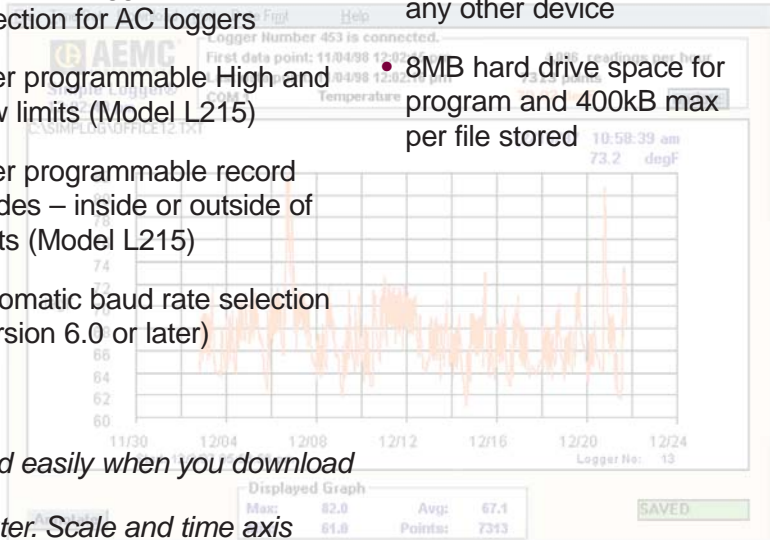
Features

- Very easy to setup and use — no programming required
- Statistics appear on screen: Max, Min, Avg, Date and Time
- On-Line display of data logger values
- Zoom capability with automatic statistics update
- User keyed text annotations
- Automatically displays values at the cursor position
- Export data to spreadsheet and database software

- Print both graphs and tabular listings
- Paste graphs into other applications
- Programmable scale and units for all DC loggers. Automatic selection for AC loggers
- User programmable High and Low limits (Model L215)
- User programmable record modes – inside or outside of limits (Model L215)
- Automatic baud rate selection (version 6.0 or later)

Computer Requirements

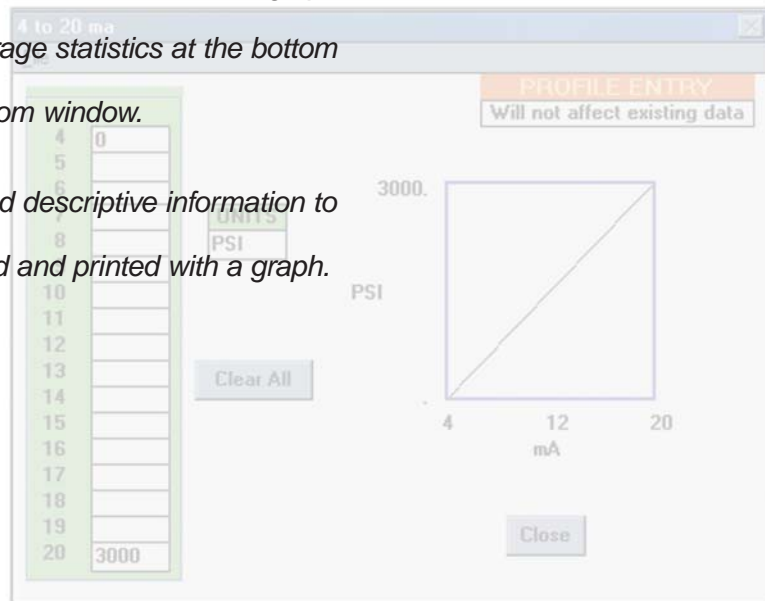
- 486 or higher
- 8MB of RAM
- Windows®95/98/2000/ME/XP or Windows®NT
- One serial port not in use by any other device
- 8MB hard drive space for program and 400kB max per file stored

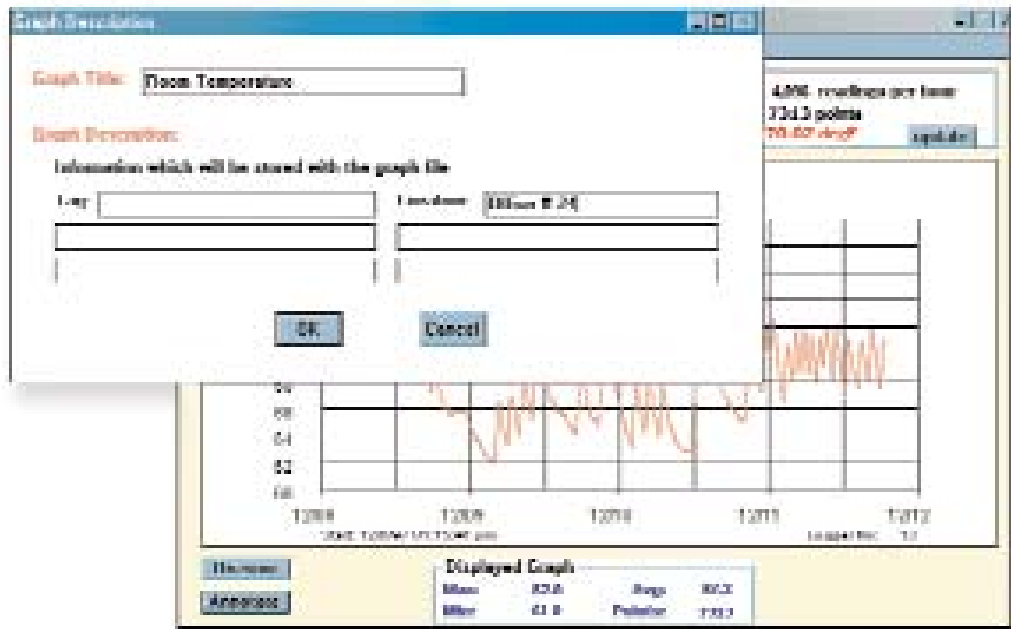
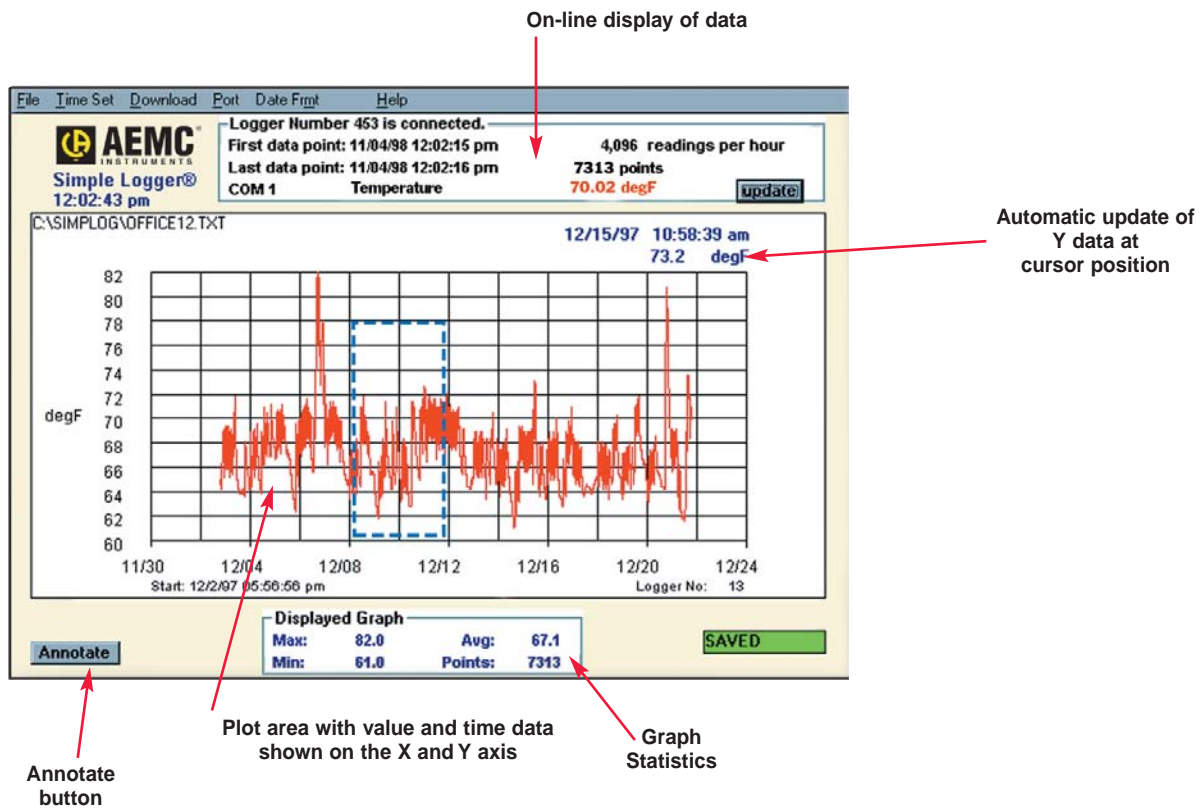


Plot graphs and view statistics quickly and easily when you download data from Simple Logger® to your computer. Scale and time axis update automatically.

Click and drag your mouse to zoom up the desired area of the graph for better viewing. The Min, Max and Average statistics at the bottom of the graph update automatically with zoom window.

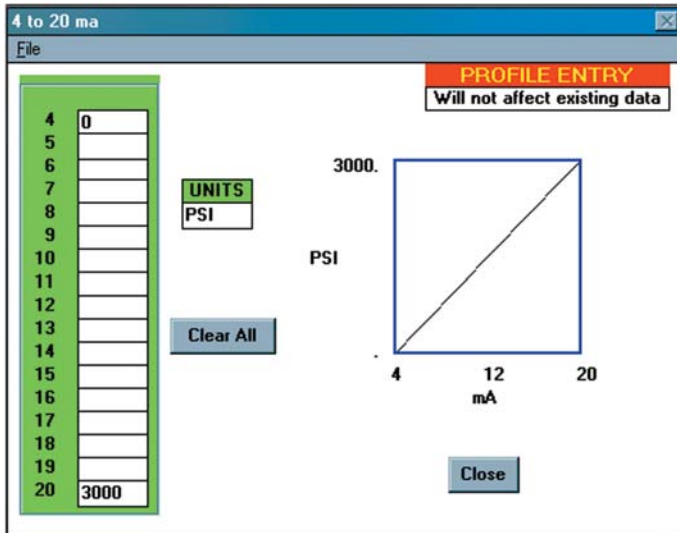
Click the Annotate button to add a title and descriptive information to your graph. This information can be stored and printed with a graph.



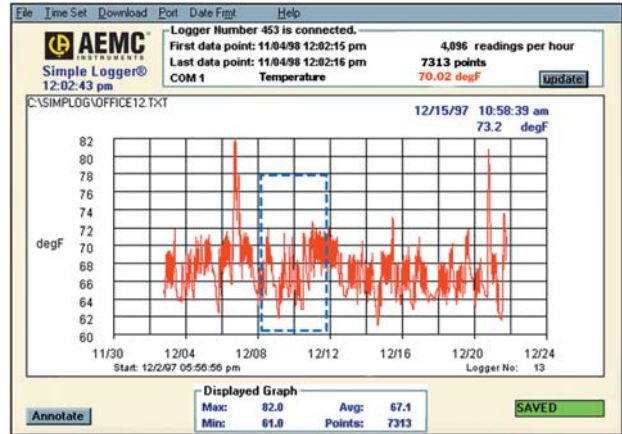


Click the Annotate button to add a title and descriptive information to your graph. This information can be stored and printed with a graph.

Simple Logger® Software



Click the scale button in the file menu to create custom scales and engineering units for DC voltage (Models L410 & L430) and DC current loggers (Model L320).



Click and drag your mouse to zoom up the desired area of the graph for better viewing. The Min, Max and Average statistics at the bottom of the graph update automatically when the graph is zoomed.

Accessories



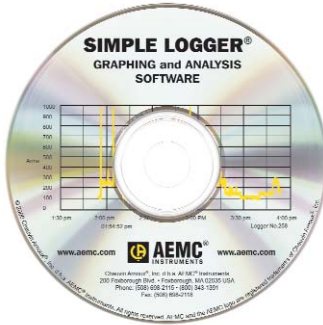
Split Core AC and DC Current Probes

Current Probe and Simple Logger® Compatibility

Series	Probe Model	Ratio	Measurement Range		Output Signal		Output Connection	Catalog No.	Logger Model
			AC	DC	Current	Voltage			
 $\varnothing = 0.78"$	MN211	1000:1	0.5 to 240A	–	1mAAC/AAC	–	Lead	2115.73	L110
	MN213	1000:1	0.5 to 240A	–	1mAAC/AAC	–	Lead	2115.75	L110
	MN251	–	0.1 to 240A	–	–	1mVAC/AAC	Lead	2115.77	L100
	MD301	–	2 to 500A	–	–	1mVdc/AAC	Lead	1201.07	L430
	MD303	1000:1	4 to 500A	–	1mAAC/AAC	–	Lead	1201.21	L110
	MD305	1000:1	1 to 600A	–	1mAAC/AAC	–	Lead	1201.36	L110
 $\varnothing = 1.18"$	MD314	–	4 to 500A	–	–	1mVAC/AAC	Lead	2110.75	L100
	MR410*	–	1 to 400A –	1 to 600A	–	1mV/AAC 1mV/Abc	Lead Lead	1200.70 1200.70	L100 (AC) L430 (DC)
	MR411*	–	0.2 to 40A 0.5 to 400A –	– 0.5 to 600A 0.4 to 60A 0.5 to 600A	– – 10mV/AAC 1mV/AAC 10mV/Adc 1mV/Abc	Lead	1200.68 1200.68	L100 (AC) L430 (DC)	
 $\varnothing = 1.6"$	MR520*	–	1 to 1000A –	– 1 to 1500A	– –	1mV/AAC/dc 1mV/AAC/dc	Lead	1200.71	L100 (AC) L430 (DC)
	MR521*	–	0.2 to 100A 0.5 to 1000A –	0.4 to 150A 0.5 to 1500A 0.4 to 1500A 0.5 to 1500A	– – 10m V/AAC 1mV/AAC 10mV/Adc 1mV/Abc	Lead	1200.69 1200.69	L100 (AC) L430 (DC)	
	SR604	1000:1	0.1 to 1000A	–	1mAAC/AAC	–	Lead	2113.44	L110
 $\varnothing = 2.05"$	SR652	–	0.1 to 1000A	–	–	1mVAC/AAC	Lead	2113.46	L100
	SR704	1000:1	1mA to 1000A	–	1mAAC/AAC	–	Lead	2116.30	L110
	SR752	–	0.1 to 1000A	–	–	1mVAC/AAC	Lead	2116.32	L100

*Caution: Do not use DC loggers with AC probes or AC loggers with DC Probes

Flexible Current Probe and Simple Logger® Compatibility



2114.26
Simple Logger® Software Upgrade for all models (Receive software upgrade notices when warranty registration is on file)



Flexible Probes for use with Simple Logger® Model L100

24" Flexible Probes

Catalog No.	Probe Model	Range	Ratio
2112.20	200-24-1-1	200A	1mV/A
2112.24	300-24-1-1	300A	1mV/A
2112.34	500-24-1-1	500A	1mV/A
2112.39	1000-24-1-1	1000A	1mV/A
2112.62	6000-24-1-0.1	6000A	0.1mV/A
2112.70	10000-24-1-0.1	10,000A	0.1mV/A
2112.93	500-24-2-1	50/500A	10/1mV/A
2112.98	1000-24-2-1	100/1000A	10/1mV/A
2113.19	6000-24-2-0.1	600/6000A	1/0.1mV/A
2113.27	10000-24-2-0.1	1000/10,000A	1/0.1mV/A
2114.87	3000-24-2-0.3	300/3000A	3.3/0.3mV/A

36" Flexible Probes

Catalog No.	Probe Model	Range	Ratio
2112.02	10000-36-2-0.1	1000/10,000A	1/0.1mV/A
2112.41	1000-36-1-1	1000A	1mV/A
2112.64	6000-36-1-0.1	6000A	0.1mV/A
2112.72	10000-36-1-0.1	10,000A	0.1mV/A
2113.00	1000-36-2-1	100/1000A	10/1mV/A
2113.21	6000-36-2-0.1	600/6000A	1/0.1mV/A
2114.88	3000-36-2-0.3	300/3000A	0.3/3.3mV/A

48" Flexible Probes

Catalog No.	Probe Model	Range	Ratio
2112.03	10000-48-2-0.1	1000/10,000A	1/0.1mV/A
2112.42	1000-48-1-1	1000A	1mV/A
2112.65	6000-48-1-0.1	6000A	0.1mV/A
2112.73	10000-48-1-0.1	10,000A	0.1mV/A
2113.01	1000-48-2-0.1	100/1000A	10/1mV/A
2113.22	6000-48-2-0.1	600/6000A	1/0.1mV/A

60" Flexible Probes

Catalog No.	Probe Model	Range	Ratio
2112.74	10000-60-1-0.1	10,000A	0.1mV/A
2113.29	10000-60-2-0.1	1000/10,000A	1/0.1mV/A



2111.31
Safety Grip Probes, set of two



LongLife AmpFlex™ for use with Simple Logger® Model L100

24" Flexible Probes

Catalog No.	Probe Model	Range	Ratio
2120.66	1000-24-1-1	1000A	0.1mV/A
2120.67	1000-24-2-1	100/1000A	10mV/1mmV/A

36" Flexible Probes

Catalog No.	Probe Model	Range	Ratio
2120.68	3000-36-1-1	3000A	0.3mV/A
2120.69	3000-36-2-1	300/3000A	0.3mV/3.3mV/A

Contact Us

United States & Canada:

Chauvin Arnoux[®], Inc.
d.b.a. AEMC[®] Instruments
200 Foxborough Blvd.
Foxborough, MA 02035 USA
(508) 698-2115 • Fax (508) 698-2118
www.aemc.com

Customer Support – for placing an order, obtaining price & delivery:
customerservice@aemc.com

Sales Department – for general sales information:
sales@aemc.com

Repair and Calibration Service – for information on repair & calibration, obtaining a user manual:
repair@aemc.com

Technical and Product Application Support – for technical and application support:
techinfo@aemc.com

Webmaster – for information regarding www.aemc.com:
webmaster@aemc.com

South America, Central America, Mexico, Caribbean, Australia & New Zealand:

Chauvin Arnoux[®], Inc.
d.b.a. AEMC[®] Instruments
15 Faraday Drive
Dover, NH 03820 USA
(978) 526-7667 • Fax (978) 526-7605
export@aemc.com
www.aemc.com

All other countries:

Chauvin Arnoux SCA
190, rue Championnet
75876 Paris Cedex 18, France
33 1 44 85 45 28 • Fax 33 1 46 27 73 89
info@chauvin-arnoux.com
www.chauvin-arnoux.com