

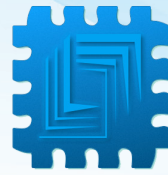


Advanced Test Equipment Corp.

www.atecorp.com 800-404-ATEC (2832)

## Mini Safari™ High Power CW Transmitter

Portable meets Powerful



CONSULTIX



The Mini Safari™ CW transmitter is a hand-held high-power signal generator particularly engineered for field applications such as propagation studies, small cells planning, DAS testing and coverage mapping.

The Portable transmitter is available in different configurations; 5 Watts, 10 Watts or 20 Watts. The 5 Watt version comes as a single-port model (Mini safari-1) or a dual-port model (Mini safari-2). The 2 ports are identical and each port covers the full range of frequency bands from 150 MHz to 2700 MHz with 5 Watt output power and delivers 2 Watt output power at the 3.5 GHz band. And optionally it can be upgraded to 10 Watts from 400 to 2700 MHz.

The 10 Watt model (Mini Safari-1CB) comes as a single port transmitter delivering 10 Watts across the whole frequencies from 600 to 4200 MHz, hence covering public safety bands, cellular bands reaching out to the C-Band with 1 device. And optionally it can be operated with 20 Watts at most of its operational range (option Mini Safari-1CB-P20).

The field-proven RF generator is easily operated via its built-in touch keypad & LCD display and its enclosure provides IP 65 protection rating against water and dust when the lid is closed during operation.

The system is based on Consultix award-winning WTX transmitter that achieved remarkable success globally and has been the preferable choice for hundreds of customers since 2011 due to its field-convenience, wide-band operation and cost-efficiency.



www.consultixwireless.com



**CONSULTIX**

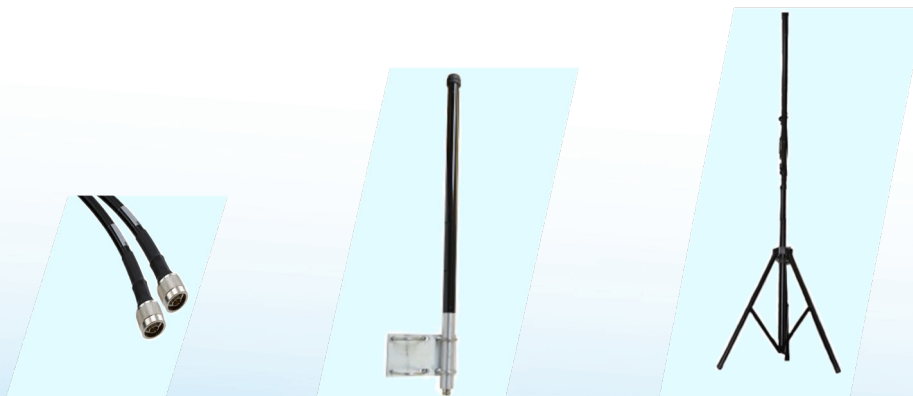


<b>Specifications</b>					
	<b>Mini Safari™-1</b>	<b>Mini Safari™-2</b>	<b>Mini Safari-Mix5</b>	<b>Mini Safari-Mix10</b>	<b>Mini Safari-1CB</b>
No. of Ports (High Power)	1	2			1
Frequency Bands	0.15 to 3.7 GHz		Port1: 0.4 to 2.7 GHz Port2: 3.2 to 4.2 GHz		0.6 to 4.2 GHz
Frequency Resolution	100 KHz (1 KHz Optional)				1 KHz
Frequency Accuracy	2 ppm. (typ. 1 ppm)				
Frequency Aging per Year	1 ppm				
Modulation Type	CW (Continuous Wave)				
Maximum Output Power	37 dBm; 150 to 2700 MHz (Optional 40 dBm) 33 dBm; 2700 to 3500 MHz 31 dBm; 3500 to 3600 MHz 29 dBm; 3600 to 3700 MHz		37 dBm (5 Watts)		40 dBm (10 Watts)
Minimum Output Power*	0.1 Watt				
Amplitude Accuracy	± 1 dB (Typ. ±0.5dB) **				
Stability	±0.5 dB + 0.1 dB/ °C				
Amplitude Resolution	1 dB or 1 W (Select with Order)				
Phase Noise	< -65 dBc/Hz @ 10 KHz offset				
Spurious	-50 dBc to -60 dBc				
Max. Power Consumption	150 Watts				
Low Power Ports (Optional)	3	2			3
Low Power Port (Optional)	150 to 3700 MHz (max. 15 dBm, refer to details in ordering info)				
RF Output Ports	N-female (High Power), SMA female (Low Power)				
RF Port(s) Impedance	50 Ω				
External DC input	28 VDC (Circular 4 pins connector)				
Power Supply	Included external AC/DC Adapter: 100-240V AC, 50-60 Hz				
External Dimensions	300 x 250 x 140 mm			450 x 430 x 260 mm	
Weight	4 Kg (9 lbs)	4.5 kg (10 lbs)		9 Kg (20 lbs)	
Enclosure	Ruggedized Plastic Hard Case				
VSWR Protection	10:1				
Operating Temperature	-10 to +50 C				
Ingress Protection	IP65 (Mini Safari-1CB only, with Lid closed)				
Cooling	Forced Air				
Display	LCD				
Control	Touch Keypad				
Certifications	FCC and EN55022/CISPR 22 EMI				
Standard Package	Transmitter, AC/DC adapter, user manual and calibration certificate				

\*Minimum level ranges from 0.1 Watt to 1 Watt according to the band and the model

\*\*Parameter specified after warm-up time @ temperature 25 - 30°

<b>Ordering Information</b>	
Portable heavy-duty CW transmitter; single-port 150 to 3700 MHz, Max. output power 29 to 37 dBm. N-female connector, LCD display, touch keypad, AC and DC powered.	Mini Safari-1
Portable heavy-duty CW transmitter; single-port 400 to 2700 MHz, Max. output power 37 dBm. N-female connector, LCD display, touch keypad, AC and DC powered.	Mini Safari-1s
Portable heavy-duty CW transmitter; dual-port (each 150 to 3700 MHz), Max. output power 29 to 37 dBm. N-female connector, LCD display, touch keypad, AC and DC powered.	Mini Safari-2
Portable heavy-duty CW transmitter; dual-port (each 400 to 2700 MHz), Max. output power 37 dBm. N-female connector, LCD display, touch keypad, AC and DC powered.	Mini Safari-2s
Portable heavy-duty CW transmitter; dual-port: Port1: 400 to 2700 MHz, Max. power 5 Watts Port2: 3200 to 4200 MHz, Max. power 5 Watts. N-female connector, LCD display, touch keypad, AC and DC powered.	Mini Safari-Mix5
Portable heavy-duty CW transmitter; dual-port: Port1: 400 to 2700 MHz, Max. power 10 Watts Port2: 3200 to 4200 MHz, Max. power 10 Watts. N-female connector, LCD display, touch keypad, AC and DC powered.	Mini Safari-Mix10
Portable heavy-duty CW transmitter; single-port 3200 to 4200 MHz, Max. output power 10 Watts, N-female connector, LCD display, touch keypad, AC and DC powered.	Mini Safari-1CBe
Portable heavy-duty CW transmitter; single-port 600 to 4200 MHz, Max. output power 10 Watts, N-female connector, LCD display, touch keypad, IP 65 protection rating, AC and DC powered.	Mini Safari-1CB
Frequency extension Softkey upgrade for Mini Safari-1S (single-port) to full band 150 to 3700 MHz	Mini Safari-1ext
Frequency extension Softkey upgrade for Mini Safari-2S (dual-port) to full band 150 to 3700 MHz	Mini Safari-2ext
10-Watt power option (400 to 2700 MHz) for Mini Safari-1 or Mini Safari-1s	Mini Safari-1P10
10-Watt power option (400 to 2700 MHz) for Mini Safari-2 or Mini Safari-2s	Mini Safari-2P10
Extra low-power port for Mini Safari transmitters. 15 dBm: 150 to 1800 MHz 10 dBm: 1800.1 to 2700 MHz 5 dBm: 2700.1 to 3500 MHz 2 dBm: 3500.1 to 3700 MHz.	Mini Safari-LPP1
20-Watt power option for Mini Safari-1CB; 43 dBm : 600 to 2700 MHz 41.5 dBm : 2700 to 3300 MHz 43 dBm : 3300 to 3500 MHz 41.5 dBm : 3500 to 4000 MHz 40 dBm : 4000 to 4200 MHz	Mini Safari-1CB-P20
<b>Optional Accessories</b>	
RF cable; 6m, 400 - 5800 MHz, overall Loss 1.5 dB @2.4GHz, Type-N male to Type-N male	Safari-Acc-CNN-6
Omni-directional antenna; 698 -960 MHz & 1710- 2180 MHz & 2200 - 2700 MHz, 100 Watt, Gain >1.2 dBi, VSWR < 1.8:1	Safari-Acc-OHA727
Outdoor Omni-directional antenna; 900 MHz Band, 25 Watt, Gain 4 dBi, VSWR 2:1, Type N-female	Safari-Acc-OA9
Outdoor Omni-directional antenna; 1800 MHz Band, 25 Watt, Gain 5 dBi, VSWR 2:1, Type N-female	Safari-Acc-OA18
Outdoor Omni-directional antenna; 1710 - 2170 MHz, 25 Watt, Gain 6 dBi, VSWR < 2:1, Type N-female	Safari-Acc-OA21
Outdoor Omni-directional antenna; 3400 - 3700 MHz, 25 Watt, Gain 9 dBi, VSWR 2:1, Type N-female	Safari-Acc-OA35-9
Non-metal Tripod; 4.8 m (188 in.), Folds down to 2.0 m (78 in.), 1.1m Collapsed, < 10 Kg. Including antenna mounting plate	WTX-Acc-5LT





Find us:  
133, St. 17, Mohammed Farid Axis, 11835 New Cairo, Egypt.  
+2 02 25604930                      sales@consultixwireless.com

[www.consultixwireless.com](http://www.consultixwireless.com)