

Special product features

## GROUND RESISTANCE TESTERS

### Multi-Function

### Model 6472

Used under difficult conditions such as the presence of high stray currents that normally affect accuracy



Have a better understanding about Ground Resistance Testing



The Model 6472 provides an automated way to measure the value of the earth/ground using the Fall-of-Potential method and storing measurements.



### SPECIFICATIONS

MODEL	6472
<b>ELECTRICAL</b>	
<b>3-Point Measurement</b>	
Range (Auto-Ranging)	0.09Ω to 99.9kΩ
Resolution	0.01Ω to 100Ω
Test Voltage	Nominal 16 or 32Vrms user selectable
Resistance Measurement Frequency	41 to 5078Hz automatic or user selectable
Test Current	Up to 250mA
Accuracy	±2% of Reading + 1ct @ 128Hz
<b>2 Clamp Measurement</b>	
Range	0.1 to 500Ω
Resolution	0.01 to 1Ω
Measurement Frequency	Auto: 1611Hz Manual: 128Hz-1367Hz-1611Hz-1758Hz
<b>Soil Resistivity 4-Point Measurement</b>	
Test Method	Wenner or Schlumberger selectable with automatic calculation of test results in Ω-meters
Range (Auto-Ranging)	0.01 to 99.99kΩ; ρ max: 999kΩm
Resolution	0.01 to 100Ω
Test Voltage	16 or 32V user selectable
Frequency	From 41 to 128Hz selectable
<b>External Voltage Measurement</b>	
Range (Auto-Ranging)	0.1 to 65.0VAc/dc – DC to 440Hz
Accuracy	±2% of Reading + 1ct
<b>Resistance Measurement (Bond Testing)</b>	
Measurement Type	2-Pole (with lead resistance compensation) or 4-Pole (Kelvin sensing) user selectable
Range (Auto-Ranging)	2-Pole 0.02Ω to 99.99kΩ; 4-Pole 0.02Ω to 99.99kΩ
Accuracy	±2% of Reading + 2cts
Test Voltage	16Vdc (+, - or auto polarity)
Test Current	Up to 250mA max
<b>Data Storage</b>	
Memory Capacity	512 test results (64KB)
<b>Power Source</b>	
Recharging Source	9.6V rechargeable battery pack (included) 110/220V, 50/60Hz external charger with 18Vdc, 1.9A output

### TEST KITS

300 ft Kit: Catalog #2135.53  
500 ft Kit: Catalog #2135.54

Refer to the following page for Model 6472 Kit descriptions Catalog #2135.35, #2135.36 & #2135.37



### ACCESSORIES

► **MN82 current probe (2mA to 10Arms)**  
Catalog #2135.71 (optional)



► **SR182 current probe (0.5mA to 40Arms)**  
Catalog #2135.72 (optional)



► **Reel Caddy**  
Catalog #2135.85 (optional)  
Set of two, for use with ground kit spools



# Model 6472

## Large Functional Displays

### ► FEATURES

- Ground Resistance testing using the 2 clamp method (no auxiliary rods needed) using optional current probes
- 2- and 4-Wire Bond Resistance/Continuity Measurement (DC Resistance) with automatic polarity reversal
- 3-Point Fall-of-Potential measurement with manual or automatic frequency selection
- 4-Point soil resistivity measurement with automatic calculation of Rho ( $\rho$ ) and user selection of the Wenner or Schlumberger test method
- 3-Point Earth coupling measurement
- Measures Ground Impedance at frequencies up to 5kHz to test lightning strike protection
- Manual and automatic frequency scan from 41 to 5078Hz for optimum test accuracy in electrically noisy environments
- Selectable test voltage of 16 or 32V up to 250mA of test current
- Auto Power OFF feature
- Automatic recognition of all electrode connections and their resistance value
- Stores up to 512 complete test results
- Display with automatic backlight when entering a function
- Optically isolated USB communication cable included
- Automatic report generation including the fall of potential plot
- Rechargeable NiMH batteries from wall charger or vehicle power
- Rugged dustproof and rainproof field case – IP53 rated in closed position
- Includes DataView® software for set up, data storage, real-time display, analysis, report generation and system configuration

#### 4-Point Bond Test



The 4-Point Bond test shows lead connections, bond resistance test results, test voltage and current.

#### 3-Point Fall-of-Potential Test



The 3-Point Fall-of-Potential test displays test lead connection, grounding electrode resistance, test voltage and frequency.

#### Schlumberger Test



The Schlumberger test displays test lead connection, soil resistivity ( $\rho$ ) test results, test electrode resistance and more.

#### Frequency Selection Test



The Frequency selection screen displays selected test frequency and voltage for the test as well as lead connection.

#### Data Storage



Memory Recall displays test results stored at a specific memory location.

#### Wenner Test



The Wenner test displays test lead connection, soil resistivity ( $\rho$ ) test results, electrode spacing and resistance.

CATALOG NO.	DESCRIPTION
2135.51	Ground Resistance Tester Model 6472 (2-Point, 3-Point, 4-Point, Bond Test, Digital, Rechargeable Battery, DataView® software)
2135.53	Ground Resistance Tester Model 6472 Kit – 300 ft (Model 6472 and Catalog #2135.36)
2135.54	Ground Resistance Tester Model 6472 Kit – 500 ft (Model 6472 and Catalog #2135.37)
<b>Accessories (Optional) available on website storefront</b>	
2135.71*	AC Current Probe Model MN82 for use with Model 6472
2135.72*	AC Current Probe Model SR182 for use with Model 6472
2135.85	Caddy – Set of 2, Reel Caddy for use w/ Ground Kit Spools

\*2 probes required for two clamp testing method.

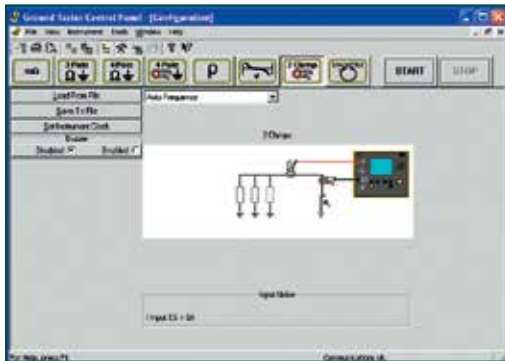
# GROUND RESISTANCE TESTERS

Multi-Function

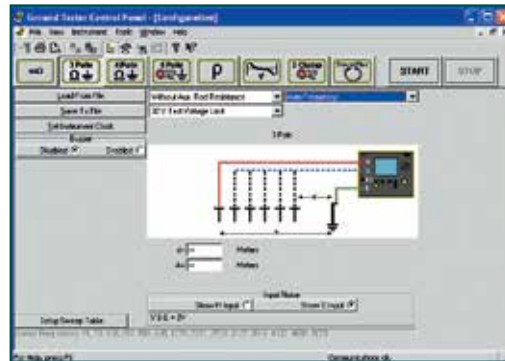
## Ground Testers Models 6471 & 6472

### Typical DataView® Functional Displays

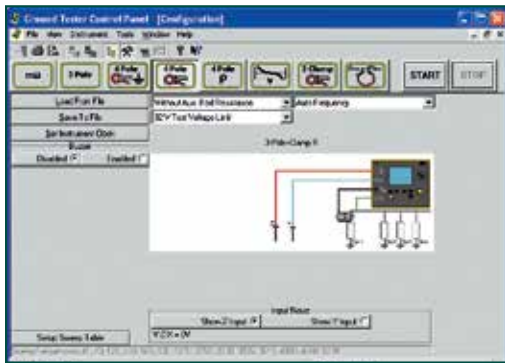
#### 2 Clamp Method Setup



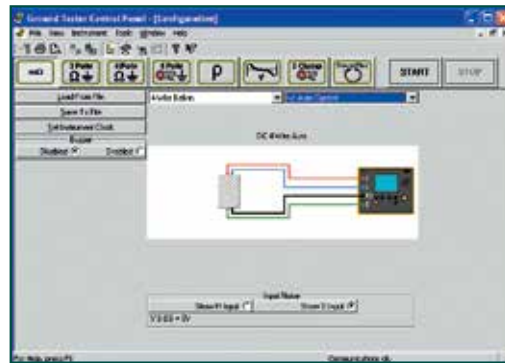
#### Fall-of-Potential, Step-Touch Potential



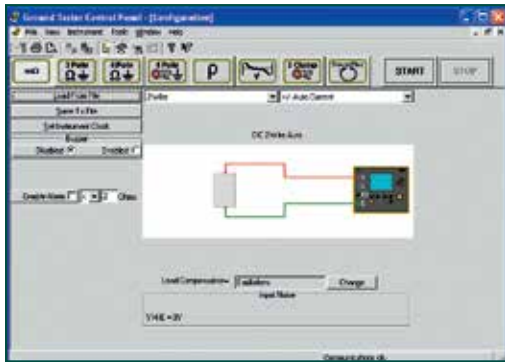
#### Selective 3-Point Testing of Multiple Rods



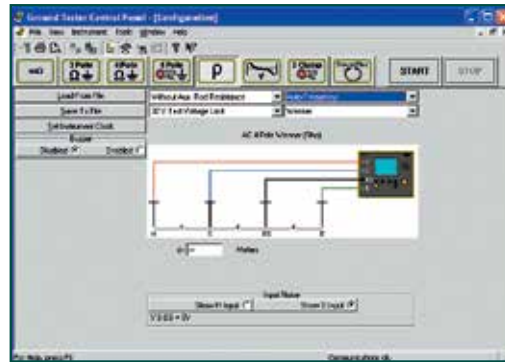
#### 4-Point Bonding For Very Low Resistance



#### Bonding



#### Soil Resistivity



### OPTIONAL KITS

#### 150 ft Kit

##### Catalog #2135.35

##### Test Kit for 3-Point

testing includes

carrying bag, two 150 ft color-coded leads on spools (red/blue), two 5 ft color-coded leads (red/blue), one 30 ft lead (green), two 14.5" T-shaped auxiliary ground electrodes, one set of five spaded lugs and 100 ft tape measure.



#### 300 ft Kit

##### Catalog #2135.36

##### Test Kit for 4-Point

testing includes

carrying bag, two 300 ft color-coded leads on spools (red/blue), two 5 ft color-coded leads (red/blue), two 100 ft color-coded leads (green and black), four 14.5" T-shaped auxiliary ground electrodes, one set of five spaded lugs and 100 ft tape measure.



#### 500 ft Kit

##### Catalog #2135.37

##### Test Kit for 4-Point

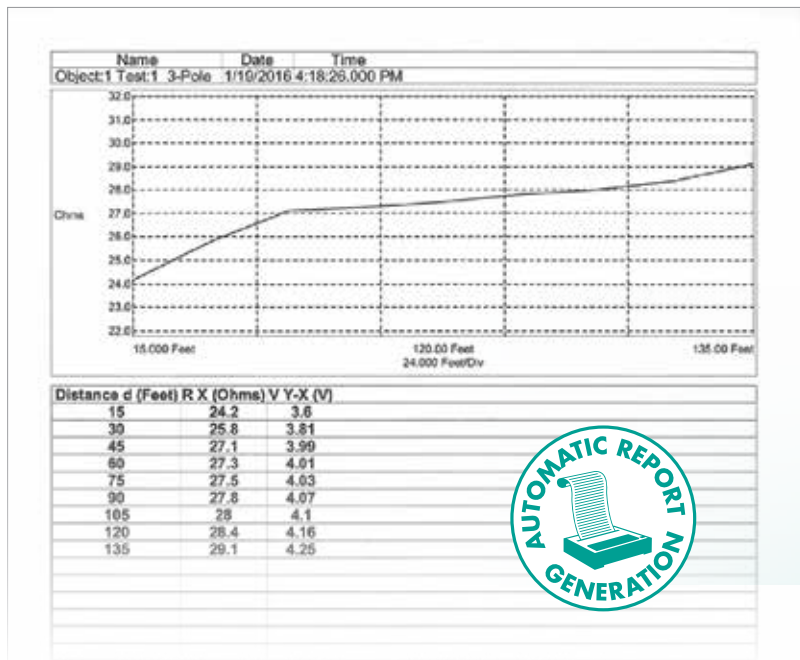
testing includes carrying bag, two 500 ft color-coded leads on spools (red/blue), two 5 ft color-coded leads (red/blue), two 100 ft color-coded leads (green and black), one 30 ft lead (green), four 14.5" T-shaped auxiliary ground electrodes, one set of five spaded lugs and 100 ft tape measure.





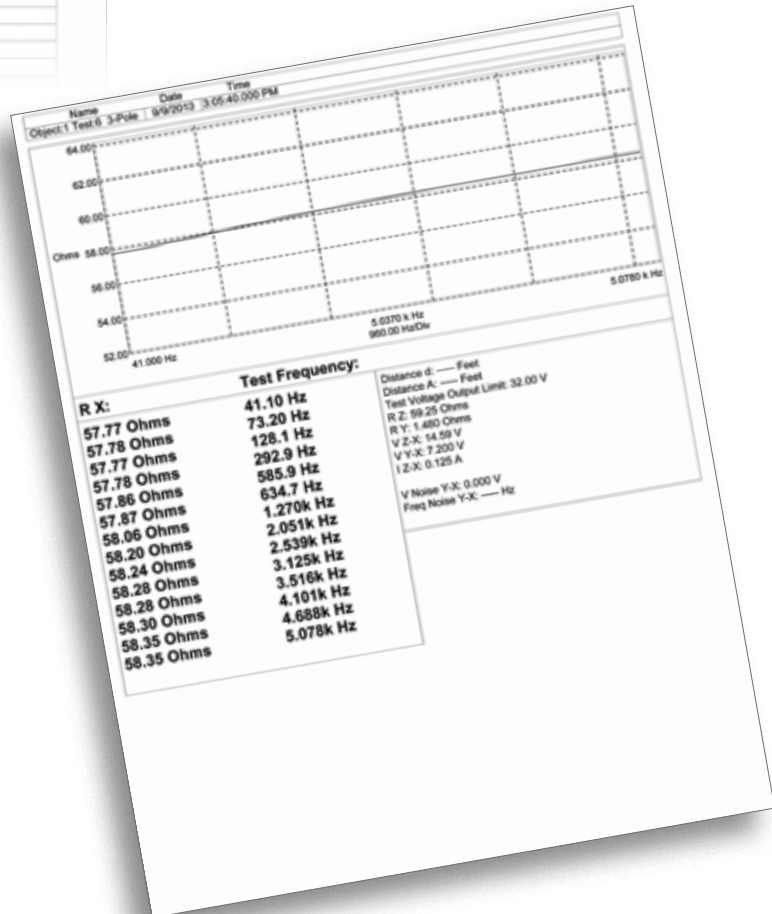
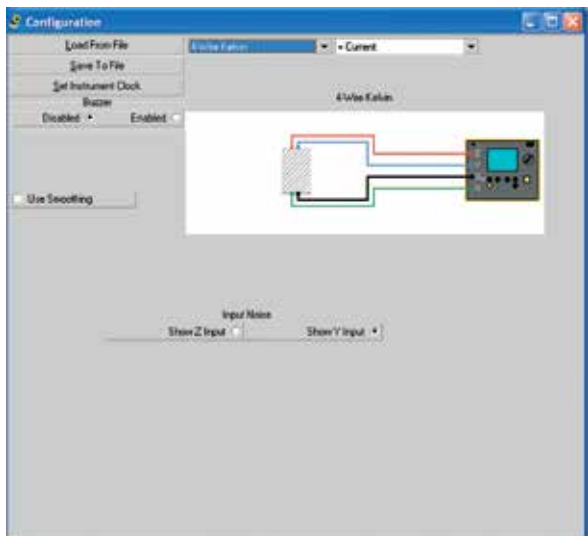
# DataView®

Data Analysis and Reporting Software for Ground Testers



## Configure all functions of the Models 6417, 6471 & 6472

- Run tests and analyze real-time data from your PC
- Configure all test functions and parameters from your PC
- Customize views, templates and reports to your exact needs
- Display Fall-of-Potential plots, tabular listings of test results, resistance vs. frequency plots, soil resistivity and bonding tests (Models 6471 & 6472)
- Print reports using standard or custom templates you design
- Free updates are available on our website [www.aemc.com](http://www.aemc.com)



DataView® software provides a convenient way to configure and control ground resistance tests from your computer. Through the use of clear and easy-to-use tabbed dialog boxes, all ground tester functions can be configured and tests can be initiated. Results can be displayed in real-time and stored in your PC. Reports may be printed along with the operator's comments and analysis.