

MILLISCOPE HD

MILLISCOPE HDV

**MODULAR FIBERSCOPE / VIDEOSCOPE
SYSTEM USER MANUAL
V01**

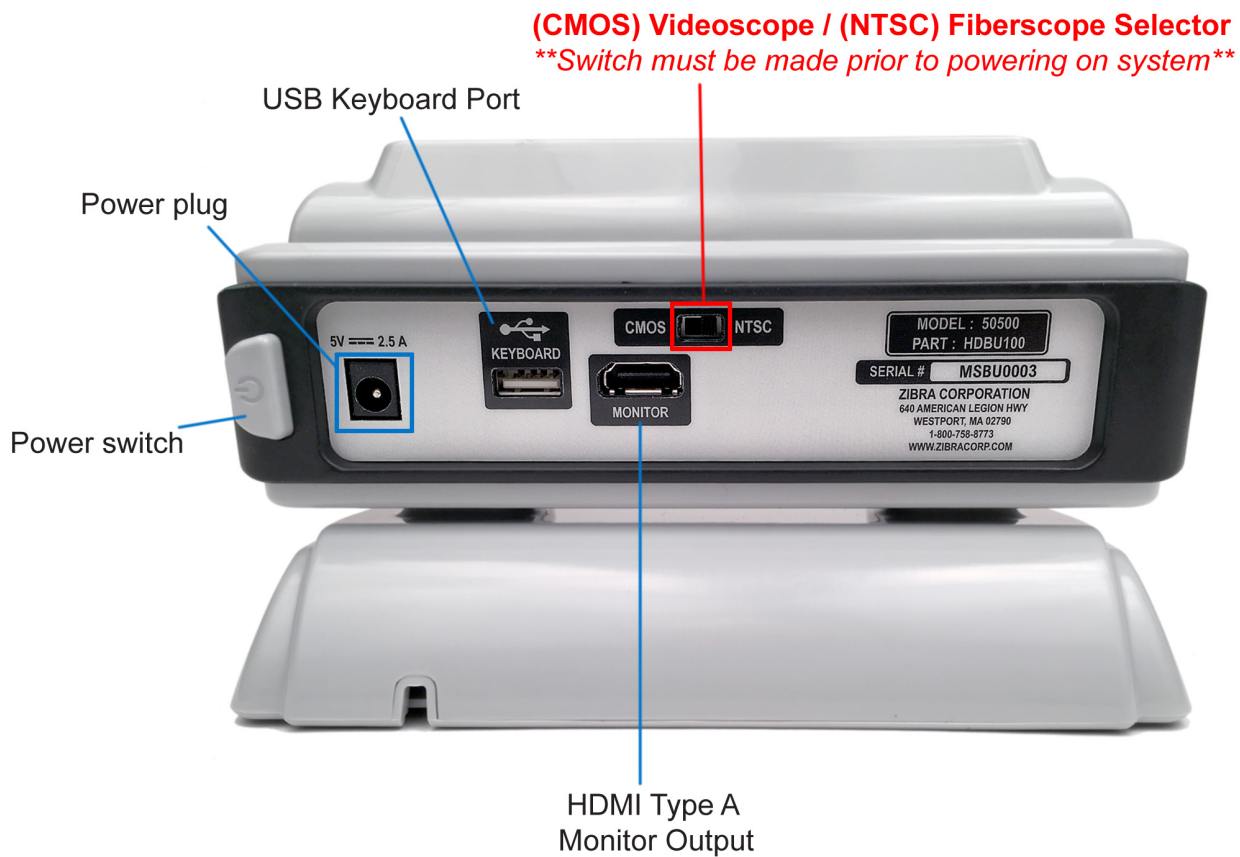


www.zibracorp.com 1-800-758-8773 sales@zibracorp.com

Front view

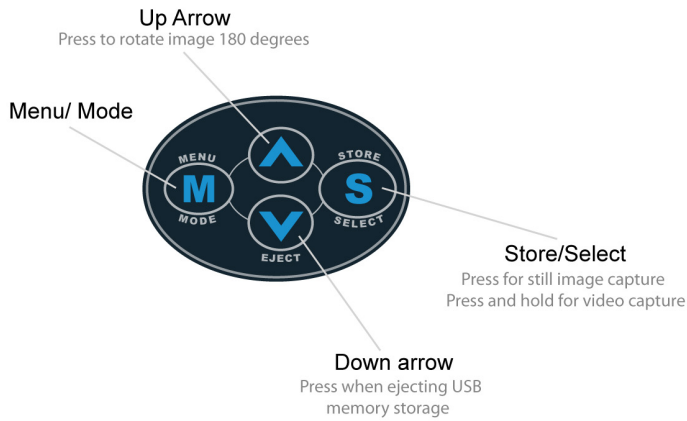


Rear view

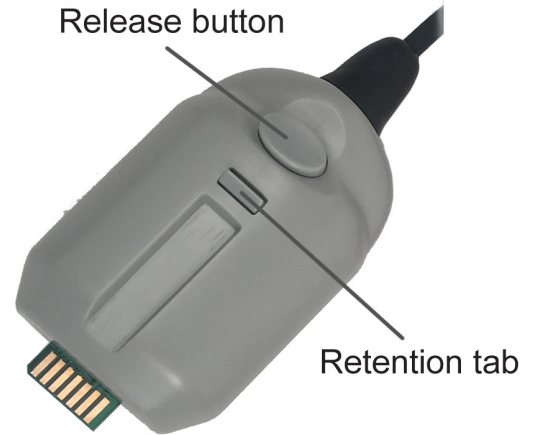


Milliscope HD Analog Handle

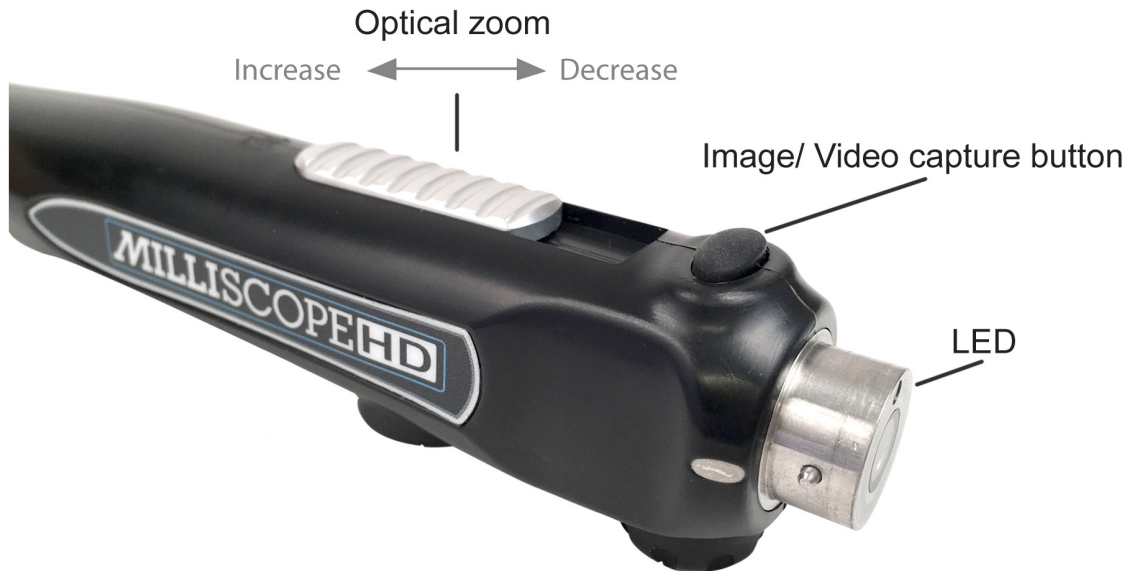
Keypad detail



Connector detail



Fiberscope camera handle: top detail

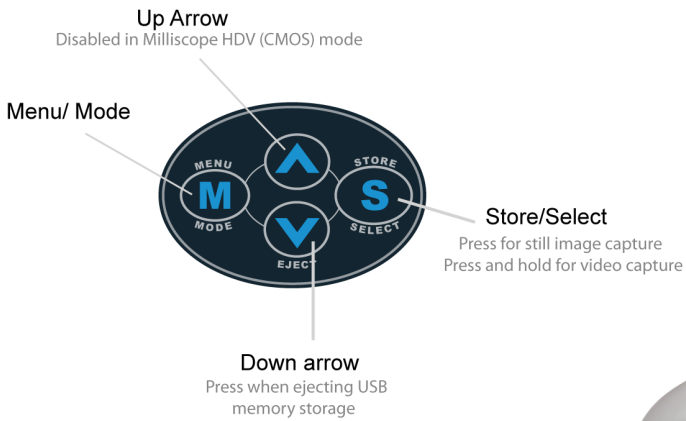


Fiberscope camera handle: bottom detail

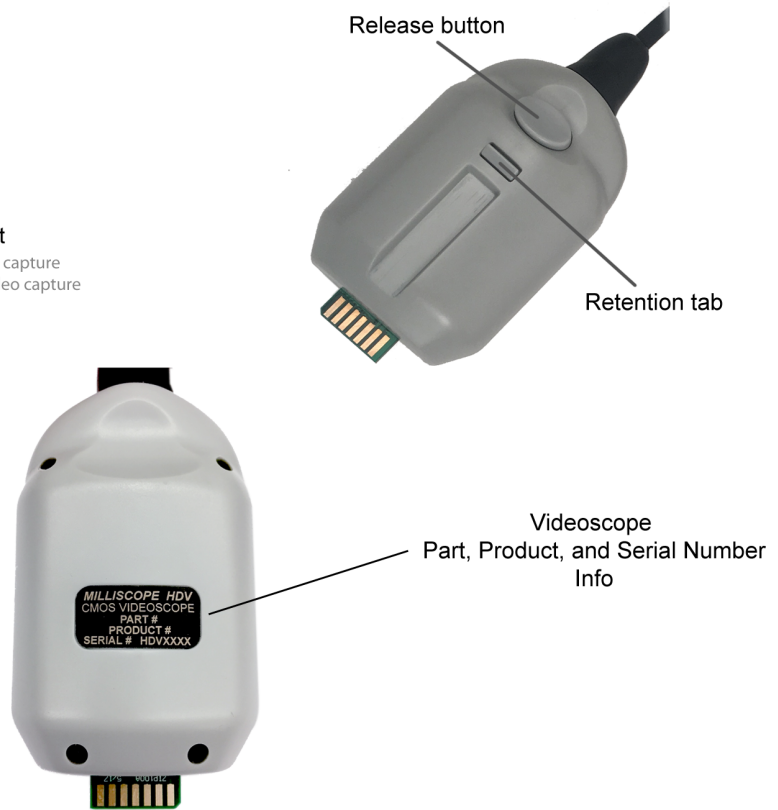


Milliscope HDV Video Handle

Keypad detail



Connector detail



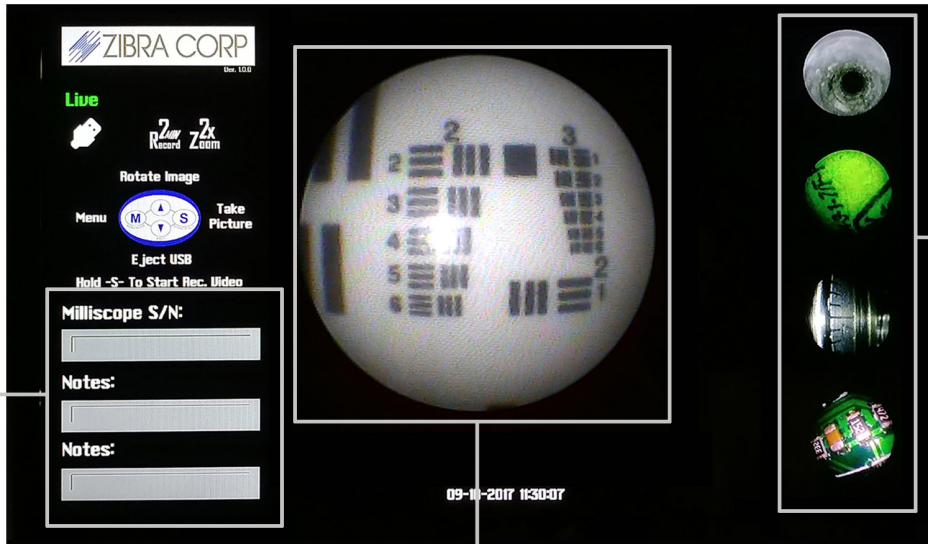
Handle Button Detail



Monitor Interface Layout

The Milliscope HD/HDV contains an integrated firmware system that allows you to use any High Definition compatible external monitor as your display. Since the software and display characteristics are built directly into the camera system, the information will display correctly with minimal setup required.

MILLISCOPE HD (ANALOG)

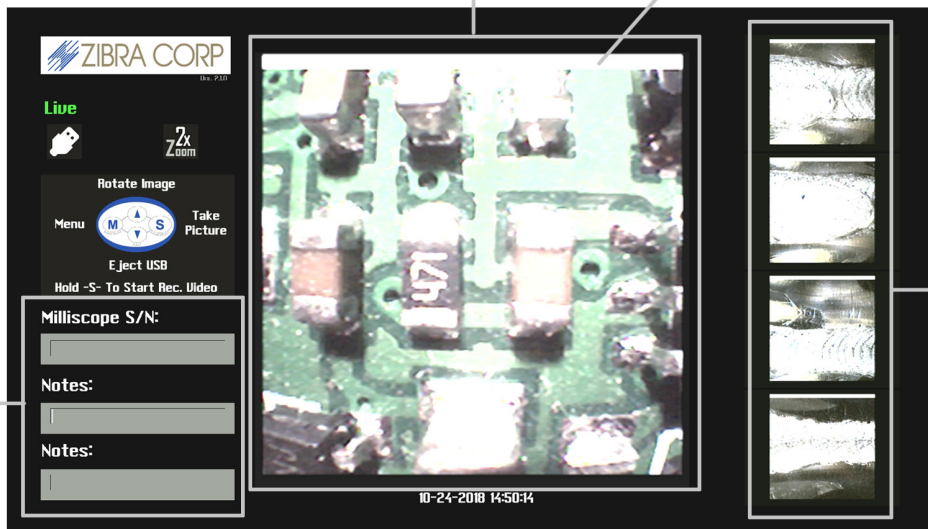


FIELD TEXT
(VIA USB KEYBOARD)

LIVE CAMERA VIEWS

SAVED
IMAGE
GALLERIES

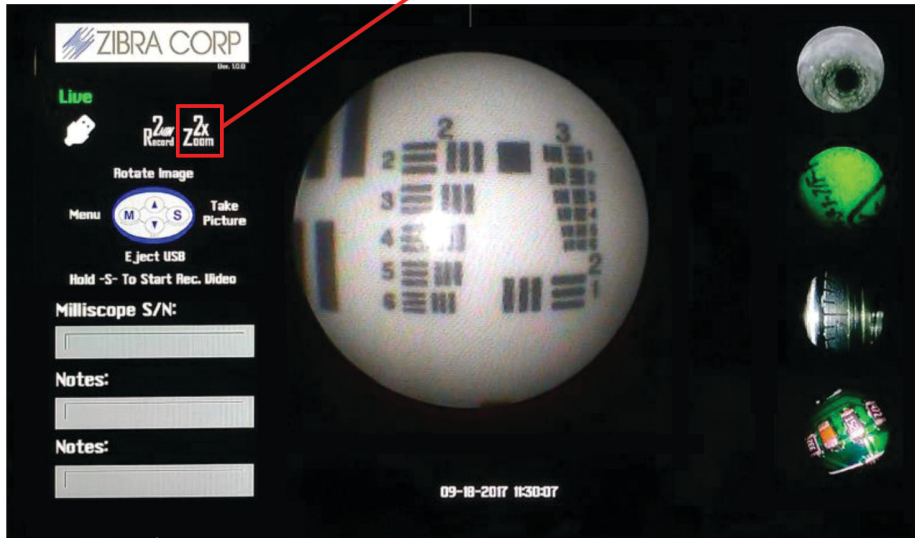
WHITE HORIZON LINE (HDV ONLY)



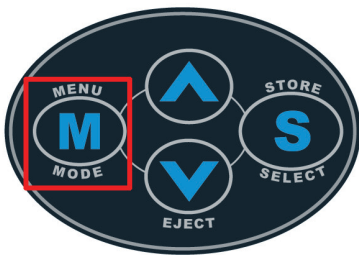
MILLISCOPE HDV (VIDEO)

Instructions for setting Milliscope HD/HDV system *Digital Zoom*

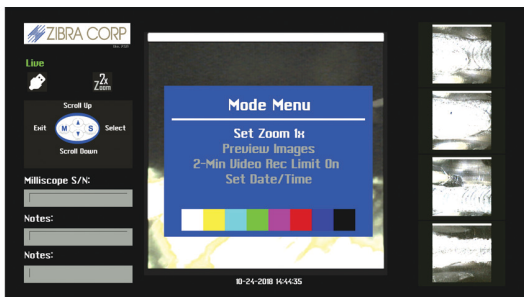
System set at 2X zoom(recommended for most applications)



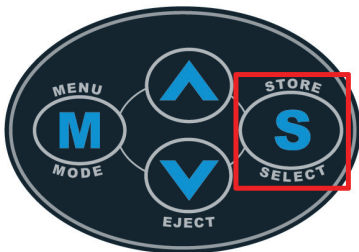
Step 1: Press *Menu* button on front of Milliscope HD base unit



Step 2: The Mode Menu will appear and Set Zoom will be highlighted in white



Step 3: Press *Select* button to choose desired magnification



General Operating and Maintenance Information

- Always place and keep *Milliscope HD* unit on a flat, level, and secure surface.
- In the event of suspected damage or failure, do not operate. Have the device inspected by qualified personnel.
- Do not operate this product if there are signs of tampering or any of the covers are removed.
- Do not allow spilling of liquids on the *Milliscope HD* unit.
- *Do not immerse any of the components in liquid.*
- Do not operate the device outside of the specified input voltage range.

CLEANING

- Use a lightly damp cloth to wipe down exterior of unit. Allow unit to dry before use.
- Use Isopropyl alcohol and a soft, clean wipe or cotton swab to clean optical surfaces.
- Contact with acids and strong solvents should be avoided as serious damage can result.

Warranty Statement

Zibra Corporation certifies that all our factory borescopes and accessories will be free of defects in materials and workmanship for one year from the date of first retail purchase.

Video, lighting and some accessory products are covered by and subjected to the terms of the manufacturer's warranty.

MILLISCOPE HD

MILLISCOPE HDV

Service & Support

Zibra Corporation
640 American Legion Hwy
Westport, MA 02790

Office: 1-800-758-8773
Email: sales@zibracorp.com
Web: www.zibracorp.com