



**FLUKE®**

## Fluke TiR1 and TiR Thermal Imagers

### Technical Data



**Optimized for building envelope, restoration and remediation, inspection and roofing applications.**

The new Fluke TiR1 and TiR Thermal Imagers are the perfect imagers for building envelope, restoration and remediation, inspection and roofing applications.

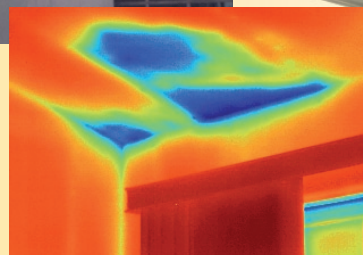
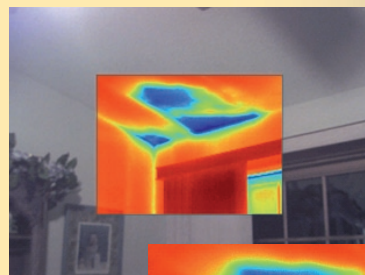
- All Fluke imagers come with IR-Fusion® Technology both in camera and software (combines visible image with IR image in full screen or picture-in-picture views) for easy identification and reporting of problems
- Rugged and reliable: Engineered to withstand a 2 m (6.5 ft) drop
- 9.1 cm (3.6 in) diagonal landscape color VGA (640 x 480) LCD
- Temperature range and thermal sensitivity optimized for building diagnostics applications
- Excellent thermal sensitivity for seeing even small temperature differences (which could indicate problems)
- Adjustable hand strap for left- or right-handed users
- Manufactured in the U.S.A.



### IR-Fusion® Technology

See things both ways—Infrared and visual (visible light) images fused together communicating critical information faster and easier—traditional infrared images are no longer enough.

Fluke led the way in the development and use of IR-Fusion and the industry followed. Both visible and infrared images allow you to communicate exactly where potential savings can be gained. IR-Fusion is standard on Fluke TiR1 and TiR models.



**Detailed specifications**

	<b>Fluke TiR1</b>	<b>Fluke TiR</b>
<b>Temperature</b>		
Temperature measurement range (not calibrated below -10 °C)	-20 °C to +100 °C (-4 °F to + 212 °F)	
Accuracy	± 2 °C or 2 % (whichever is greater)	± 5 °C or 5 % (whichever is greater)
Measurement modes	Smooth auto-scaling and manual scaling	
On-screen emissivity correction	Yes	—
<b>Imaging performance</b>		
Field of view	23° x 17°	
Spatial resolution (IFOV)	2.5 mRad	
Minimum focus distance	Thermal lens: 15 cm (6 in); Visible (visual) light lens: 46 cm (18 in)	
Focus	Manual, one-handed focus	
Image frequency	9 Hz refresh rate	
Detector type	160 X 120 focal plane array, uncooled microbolometer	
Infrared lens type	20 mm F = 0.8 lens	
Thermal sensitivity (NETD)	≤ 0.07 °C at 30 °C (70 mK)	≤ 0.1 °C at 30 °C (100 mK)
Infrared spectral band	7.5 μm to 14 μm	
Visual camera	640 x 480 resolution	
<b>Image presentation</b>		
Palettes	Ironbow, blue-red, high contrast, amber, hot metal, grey	Ironbow, blue-red, high contrast, grey
Level and span	Smooth auto-scaling and manual scaling of level and span	
Minimum span (in manual mode)	2.5 °C (4.5 °F)	
Minimum span (in auto mode)	5 °C (9 °F)	
IR-Fusion® information	Full Infrared with MAX, MID, or MIN automatic blending; and Picture-in-Picture with MAX, MID, or MIN automatic blending Visual and IR blending	Full Infrared or Picture-in-Picture
Picture-In-Picture (PIP)	Three levels of on-screen IR blending displayed in center 320 x 240 pixels	100 % IR displayed in center 320 x 240 pixels
Full screen (PIP off)	Three levels of on-screen IR blending displayed in center 640 x 480 LCD	100 % IR displayed in center 640 x 480 LCD
<b>Voice annotation</b>		
Voice annotation	60 seconds maximum recording time per image	—
<b>Image and data storage</b>		
Storage medium	SD memory card (2 GB memory card will store at least 1200 fully radiometric (.is2) IR and linked visual images each with 60 seconds voice annotations or 3000 basic (.bmp) IR images)	
File formats	Non-radiometric (.bmp) or fully-radiometric (.is2) No analysis software required for .bmp files	
Export file formats w/SmartView® software	JPEG, BMP, GIF, PNG, TIFF, WMF, EXIF, and EMF	

## General specifications

<b>Temperature</b>	Operating: -10 °C to 50 °C (14 °F to 122 °F) Storage: -20 °C to +50 °C (-4 °F to 122 °F) without batteries
<b>Relative humidity</b>	10 % to 90 % non-condensing
<b>Display</b>	9.1 cm (3.6 in) diagonal landscape color VGA (640 x 480) LCD with backlight (selectable bright or auto)
<b>Controls and adjustments</b>	User selectable temperature scale (°C/°F) Language selection Time/date set Emissivity selection and reflected background temperature compensation (TiR1 only) User selectable hot spot and cold spot on the image (TiR1 only) TiR1 allows user to adjust palette, alpha blend, level, span, PIP, and emissivity on a captured image before it is stored.
<b>Software</b>	SmartView® full analysis and reporting software included
<b>Power</b>	Battery: Internal rechargeable battery pack (included) Battery life: 3 to 4 hours continuous use (assumes 50 % brightness of LCD) Battery charge time using ac adapter/charger or dc car charger: 2 hours for full charge
<b>AC operation/charging</b>	AC adapter/charger (110 V ac to 220 V ac, 50 Hz to 60 Hz). Charges battery while imager is operating. Universal ac mains adapters included.
<b>Power saving</b>	Sleep mode activated after 5 minutes of inactivity, automatic power off after 30 minutes of inactivity
<b>Safety standards</b>	CE Directive: IEC/EN 61010-1 2nd Edition Pollution Degree 2
<b>Electromagnetic compatibility</b>	EMC directive: EN61326-1 C-Tick: IEC/EN 61326 US FCC: CFR 47, Part 15 Class A
<b>Vibration</b>	2 G, IEC 68-2-29
<b>Shock</b>	25 G, IEC 68-2-29 (2 m or 6.5 ft drop, 8 sides)
<b>Dimensions (HxWxL)</b>	0.27 m x 0.13 m x 0.15 m (10.5 in x 5 in x 6 in)
<b>Weight</b>	1.2 kg (2.65 lb)
<b>IP rating</b>	IP54
<b>Warranty</b>	Two-years
<b>Calibration cycle</b>	Two-years (assumes normal operation and normal aging)
<b>Supported languages</b>	English, Italian, German, Spanish, French, Russian, Portuguese, Swedish, Turkish, Czech, Polish, Finnish, Simplified Chinese, Traditional Chinese, Korean, and Japanese

## Ordering information

**FLUKE-TIR1** Thermal Imager  
**FLUKE-TIR** Thermal Imager



### Included with product

Thermal imaging camera w/20 mm lens, ac power supply/battery charger (including mains adapters), SD memory card, SD card reader (USB) for downloading images into your computer, SmartView® software with free software upgrades for life, rugged hard, carrying case, soft transport bag, hand strap, users manual, warranty registration card, and interactive training DVD.

### Optional accessories

**Fluke-TI Charger** Thermal Imager Car Charger  
**Fluke-T-Visor** Thermal Imager Visor



**Fluke.** *Keeping your world up and running.*®

**Fluke Corporation**  
PO Box 9090, Everett, WA 98206 U.S.A.

**Fluke Europe B.V.**  
PO Box 1186, 5602 BD  
Eindhoven, The Netherlands

**For more information call:**  
In the U.S.A. (800) 443-5853 or  
Fax (425) 446-5116  
In Europe/M-East/Africa +31 (0) 40 2675 200 or  
Fax +31 (0) 40 2675 222  
In Canada (800)-36-FLUKE or  
Fax (905) 890-6866  
From other countries +1 (425) 446-5500 or  
Fax +1 (425) 446-5116  
Web access: <http://www.fluke.com>

©2007-2009 Fluke Corporation.  
Specifications subject to change without notice.  
Printed in U.S.A. 1/2009 3035363 D-EN-N Rev C

**Modification of this document is not permitted without written permission from Fluke Corporation.**