



**FIXTURLASER ECO Wind**  
Wireless Wind Power Alignment Solutions



**FixturLaser**

ACOEM Group

## Precision Shaft Alignment Designed for the Wind Power Industry

The wireless Fixturlaser ECO Wind offers firmware and fixtures designed specifically for the wind industry. A variety of fixtures are available, ensuring almost any wind turbine can be accommodated. Whether there are obstructions that limit the degrees of rotation, or whether you align with the coupling in place or dropped, Fixturlaser's wind fixtures can address the issue.



### ALIGNMENT INTELLIGENCE

- 30 MM CCD DETECTOR + LINE LASER = VIRTUALLY ELIMINATES ROUGH ALIGNMENT
- DIGITAL SIGNAL QUALITY CONTROL = EDGE DETECTION, SIDE SPOT REJECTION, AND AMBIENT LIGHT SUPPRESSION



### GRAPHIQUE USER INTERFACE

- FINGERTIP GUIDANCE
- 3D ANIMATION
- COLOR CODED RESULTS
- ICON BASED



### TRUE POSITION SENSING

- BOTH SHAFTS' POSITIONS MONITORED SIMULTANEOUSLY
- LIVE VALUES DURING ADJUSTMENT
- VERTIZONTAL MOVES = MEASURE ONCE, MOVE IN TWO DIRECTIONS

### The Wireless ECO Wind Laser Alignment Tool Has :



- A short learning curve
- Precision measurement
- Many mounting options for different turbines
- Solutions for non-rotating shafts

### Firmware Designed to Make Wind Turbine Alignments Repeatable :



#### Machine Defined Data

- User defined machine configuration templates
- Opens window for adding a new machine with defined data
- Entered data, such as distances, target values and tolerances, will be saved



#### Specific Machines

- Predefined machine configuration templates
- Safe and efficient application that simplifies the alignment process
- Preset data, such as distances, target values and tolerances, will be saved



#### Verti-Zontal Moves

- Horizontal and vertical adjustment accomplished without additional shaft rotations
- A time saving function



## Fixturlaser Wind Turbine Fixture Options

### GE Turbines

Magnetic fixtures mount easily, fit most GE turbines for coupled alignment. Brake side fixture mounts on brake disc and allows the sensor to clear the brake in 360 degrees of rotation. The gearbox and the generator are rotated.



### Vestas Turbines

Fixtures designed for uncoupled alignments. One fixture mounts on the gearbox flange, the other on the generator flange. The gearbox is not rotated.



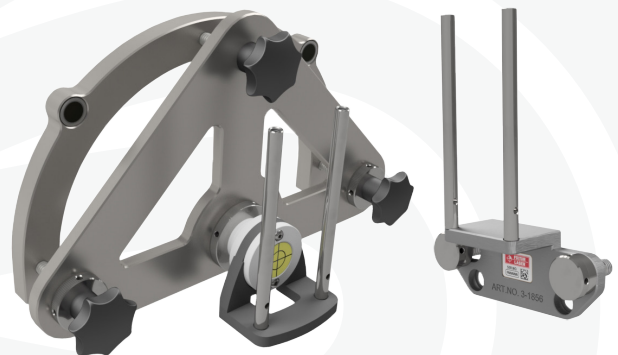
### Siemens Turbines

Fixtures designed for coupled alignments. One fixture mounts on the generator flange, the other on the brake disc. The gearbox and the generator are rotated.



### Mitsubishi Turbines

Fixtures designed for uncoupled alignments. One fixture mounts on the gearbox flange, the other on the generator flange. The gearbox is not rotated.



# Fixturlaser ECO Wind: Industry-leading precision in an economical package



## Fixturlaser ECO Wind

The Fixturlaser ECO is an affordable precision instrument created specifically for horizontal shaft alignment. In addition to providing Fixturlaser's industry-leading ease-of-use, the ECO comes with wireless sensor units, a 4" color display, rechargeable batteries and an IP65-certified design that can withstand harsh environments.

- Integrated Bluetooth
- Lifetime Warranty
- Wireless precision slim sensor units
- 4" Full-Color Screen
- Screen Flip
- 8 hours battery time, continuous use
- CCD sensors technology
- Live values during adjustment
- IP65 classified
- Custom fixtures included

ACOEM AB is a global player and leader in developing innovative, user-friendly equipment for shaft alignment. By helping industries worldwide to become perfectly aligned, and eliminating anything that might not be, we minimize unnecessary wear and production stoppages. This will ultimately make our customers more profitable and our environment more sustainable.



P.O. Box 7 SE - 431 21 Mölndal - SWEDEN  
Tel: +46 31 706 28 00 - Fax: +46 31 706 28 50  
E-mail: info@fixturlaser.se - www.fixturlaser.com



530-G Southlake Boulevard Richmond, VA 23236  
Tel: 1-800-394-3279 - Fax: 1-804-379-0189  
E-mail: info@vibralign.com - www.vibralign.com