



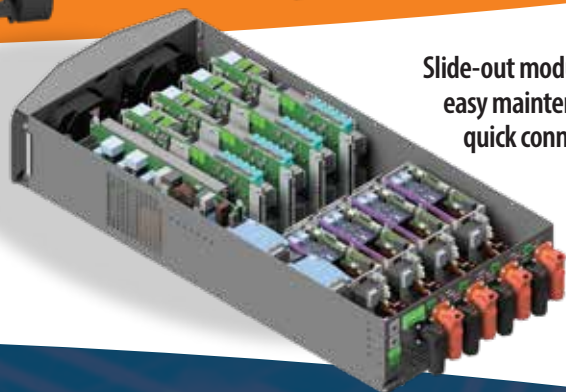
BTDC™

BITRODE DIGITAL CYCLER™

Bitrode Digital Cycler™ (BTDC™) is the ultimate battery testing solution, designed specifically for high-capacity cells, with exceptional performance specifications.

Key Features

- 24 channels of 300 A continuous current
- Data acquisition rate of 1 ms
- Rise Time (current): 1 ms or less
- Voltage accuracy: 0.015% of full scale (FS)
- Current accuracy: 0.02% of full scale (FS)
- Regenerative
- Max current per module: 1200 A
- Available Voltage ranges: -6 to +6 Volts / -20 to +20 Volts
- High (single bay) circuit density
- Available Max Current rates: 100 / 300 / 600 A
- Current measurement resolution: 5.7 mA at 300 A, 0.57 mA at 30 A
- Voltage measurement resolution: 95 uV
- Circuit-circuit isolation
- Slew Rate (current): less than 1 ms (-90 to +90%)
- 100% Duty Cycle at max power



Slide-out modules for easy maintenance with quick connectors at back.

BTDC™ Configurations

	No. of Channels	Max Current	Max Voltage
Configuration 1	24	300 A	6 V
Configuration 2	24	100 A	20 V
Configuration 3	12	600 A	6 V
Configuration 4	24	100 A	6 V

Modules of different configurations can be put in the same cabinet. Pulsing for DCIR testing can be added as an option. The HMI can be removed if not needed for the application.

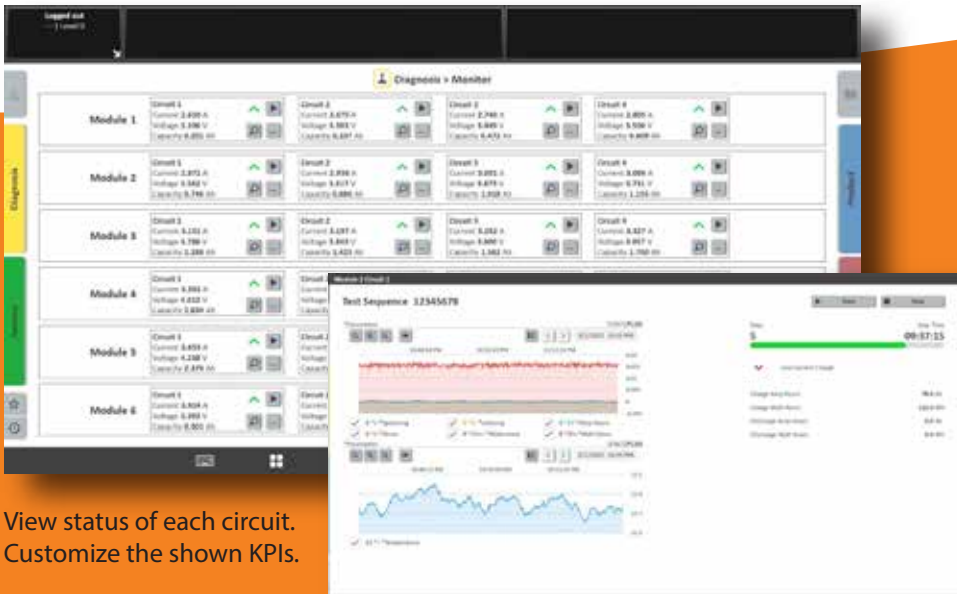
BITRODE HEADQUARTERS

9787 Green Park Industrial Drive
St. Louis, Missouri 63123 - USA
t +1 636 343-6112
f +1 636 343-7473
e info@bitrode.com



HMI touchscreen

- Uses Schuler architecture
- Choose from standard tests
- Define recipe steps
- View status of each circuit
- Customize the shown KPIs
- Graph the results of a circuit



View status of each circuit.
Customize the shown KPIs.

Graph the results of a circuit.

Additional Features

- Paralleling capability among any and all channels
- In-depth diagnostic capability
- CE, UKCA, UL, CSA
- Open communication architecture customizable as needed to connect to:
 - Existing automation infrastructure
 - External and third-part I/O modules
 - Environmental chambers
 - Third-party software

BITRODE HEADQUARTERS

9787 Green Park Industrial Drive
St. Louis, Missouri 63123 - USA
t +1 636 343-6112
f +1 636 343-7473
e info@bitrode.com

www.Bitrode.com/btdcLaunch

All specifications are preliminary and subject to change.