



**Advanced Test Equipment Rentals**  
 www.atecorp.com 800-404-ATEC (2832)

**Gator™**

**CLASS A TRANSMITTER SERIES**

**THE WORLD'S MOST POPULAR STIMULUS TRANSMITTER**



All Gator™ transmitters feature Class A power amplification, rugged, weatherproof housing and built-in VSWR antenna protection. It's light weight makes Gator a versatile transmitter suited for both field and laboratory work.

*"PERFECT FOR MEASURING SIGNAL PROPAGATION, POSITIONING ANTENNAS, SETTING POWER LEVELS OR VALIDATING RF COVERAGE."*

Gator features an agile frequency synthesizer, dynamically controlled power amplifier and a built-in modem and DTMF (touch tone) decoding for remote control of all transmitter parameters via a phone line or cellphone. Remote adjustments include the power level, channel or frequency assignment, and transmit On/Off. Included Windows® PC controller software and user adjustable knobs allow for pinpoint accurate adjustments in 0.1 dB increments, frequency adjustments and step size. Gator may be powered by standard 110-240 VAC power from any outlet, generator or battery-powered DC source. Dual cooling fans provide excellent heat dissipation and ensure the purest RF signal output. GSM modulated schemes and custom frequencies available upon request.

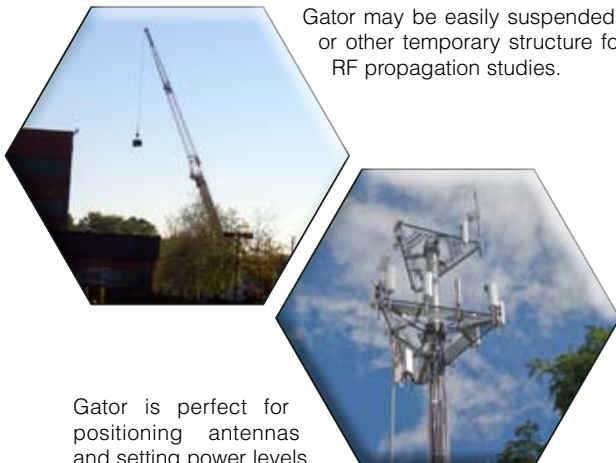
**FCC Type Accepted & CE Approval**

**FEATURES:**

- Available Frequencies:
- PCS ■ Cellular ■ LMR ■ GSM ■ SMR ■ UMTS ■ Wi-MAX
  - AWS ■ MMDS ■ iDEN ■ AMPS ■ ETACS ■ PACS ■ Paging

- Pure spectrum Class A power amplifier
- Weighs only 23 pounds
- Power amplifier with continuous adjustable power output ± 0.1 dB over 32 dB range
- Water resistant, rugged 18" x 15" x 6" ABS plastic case
- Microprocessor-controlled with front panel soft-keys or remotely controlled with an internal modem allowing for user programmable modulation schemes, power levels, channels, and frequencies
- Calibration/Usage intergrated hours meter
- 240 x 64 LCD with vacuum fluorescent backlighting
- VSWR antenna protection and internal forward and reverse measurement
- Dual cooling fans
- Built-in thermal overheat protection for amplifier
- Battery backed-up SRAM stores all user selectable parameters in the event of a power loss
- Powered from 110-240 VAC 50/60 Hz, UL, CSA approved
- CW identifier for FCC CP identification
- All parameters can be adjusted remotely via RS-232 or the internal modem or DTMF signaling tones

Gator may be easily suspended from a crane or other temporary structure for pre-network RF propagation studies.



Gator is perfect for positioning antennas and setting power levels.

**www.bvsystems.com**

Call us today for more information:  
 TOLL FREE 1-888-737-4287 / Fax: (732) 548-3404  
 www.bvsystems.com  
 sales@bvsystems.com



Providing wireless solutions for over 35 years.



# CLASS A TRANSMITTER SERIES

## SPECIFICATIONS

### FREQUENCY RANGES:

Cellular, WiMAX, LMR, Paging, SMR, GSM, ISM, WCS, iDEN, AMPS, PACS, ETACS, IS-136, AWS and more  
Class A models available in 25 or 45 Watt output power:

- 700 MHz
- 850-870 MHz
- 800-900 MHz
- 850-900 MHz
- 930-970 MHz

# 25 or 45 Watts

110/220 VAC or 24 VDC

- 1.805 - 1.880 GHz
- 1.85 - 2.10 GHz
- 2.10 - 2.17 GHz
- 2.3 - 2.36 GHz
- 2.4 - 2.49 GHz
- 2.5 - 2.7 GHz
- 3.4 - 3.7 GHz (10 watt only)

# 10 or 20 Watts

110/220 VAC or 12 VDC

Please inquire about specific frequency, output power, and channel spacing when ordering. Optional GMSK modulator.

### GENERAL SPECIFICATIONS:

<b>Display</b>	240 X 64 pixel graphic supertwist LCD (VF backlighted)
<b>Output Power</b>	Stability is less than 1.5 PPM for first year, $\pm$ for 1 PPM for aging
<b>Power Adjustments</b>	Continuous adjustable power output $\pm$ 0.1 dB over 32 dB range (below 1 GHz) CLASS A AMPLIFIERS
<b>Spurious Output</b>	Continuously adjustable via rotary knob or direct keypad entry in 1 dBm increments over 17 dB on models above 1 GHz
<b>Harmonics Output</b>	> 55 dBc (decibels below the carrier level)
<b>Power</b>	> 55 dBc (decibels below the carrier level)
<b>Remote Control</b>	110-240 VAC 50/60 Hz, autoswitching, UL and CSA approved
<b>Output Power Monitoring</b>	PCS 10 and 20 Watt models may also be powered from + 12 VDC All other models from + 24 VDC
	Via serial RS-232, internal modem or DTMF through telco
	Both forward and reverse power monitored via internal power meters.
	The output is regulated to $< \pm$ 1.0 dB of setting at up to a 6:1 VSWR

### MECHANICAL:

<b>Case Size</b>	18" x 15" x 6"
<b>Weight</b>	23 lbs. (lightest transmitter in the industry)

www.bvsystems.com

Call us today for more information:  
TOLL FREE 1-888-737-4287 / Fax: (732) 548-3404  
www.bvsystems.com  
sales@bvsystems.com



Providing wireless solutions for over 35 years.