



Sunsight™

Alignment Solutions



Tel: +1 (321) 244-9443

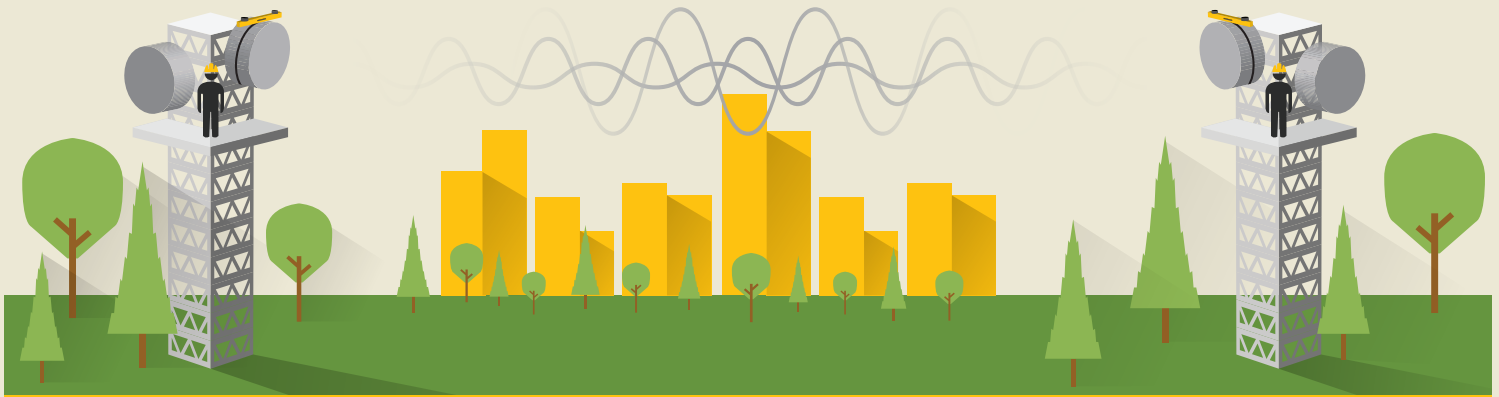
sales@sunsight.com

www.sunsight.com

Sunsight Microwave Path Alignment Kit

High-quality, Extremely Precise Microwave Path Alignment Solutions

- ✓ Align Microwave backhaul antennas in minutes instead of hours or even days
- ✓ Alignment of your microwave links has never been faster or easier
- ✓ All inclusive kit to align the link from both sides in minutes
- ✓ Azimuth, tilt, roll, height and geographic location (Lat/Long)
- ✓ No additional software, post processing, or cables are required
- ✓ Proven to align backhaul antenna links up to 150 miles



The system automatically calculates exact alignment requirements in real-time and provides the user simple targets for aligning the link. No additional software, post processing, or cables are required.

Technical Specifications

Accuracy:	AAT-15	AAT-08
Azimuth R99*	.45°	.24°
Azimuth RMS*	.15°	.08°
Tilt/Roll	.1°	.1°
Position	30 cm w/SBAS	30 cm w/SBAS
Altitude With LRF	30 cm (AGL)	30 cm (AGL)
GPS Receiver	540 channel	540 channel
Satellite Constellations	GPS and GLONASS	GPS and GLONASS

Battery:

Type	LiFePO4	LiFePO4
Life	8-9 hrs	8-9 hrs
Charge Time	1.5 hrs	1.5 hrs
Charger	100-240VAC	100-240VAC

Weight:

Unit	4.5 lbs	5.4 lbs
Mount	4 lbs	4 lbs
Unit Dimensions	22.7"x3.8"x1.7" 57.6cmx9.6cmx4.3cm	42.1"x3.8"x1.7" 106.8cmx9.6cmx4.3cm

Environment and Connectivity:

Op Temp	-40°C to 70°C (-40°F to 158°F)
Storage Temp	-40°C to 85°C (-40°F to 185°F)
Humidity	95%
Communications	802.11b,g,n
Output	PDF, CSV, HTML, Proprietary encrypted format
Memory	4 GB
Industry Certifications	CE and FCC

What's Included

Part #:1015

Microwave Path Alignment Kit (Includes: 2 AAT-15 MW Aligners; 2 Hard Carrying Cases p/n 7501; 2 IP68 Sunsight Rugged Tablets p/n 4200; 2 Shielded Microwave Mounts p/n 2108)

Part #:1008

Microwave Path Alignment Kit (Includes: 2 AAT-08 MW Aligners; 2 Hard Carrying Cases p/n 7502; 2 IP68 Sunsight Rugged Tablets p/n 4200; 2 Shielded Microwave Mounts p/n 2108)

Part #:3301 (Added Option)

Laser Rangefinder (Laser Tape Drop) — for antenna AGL height accuracy up to 1 foot

*RMS or root mean square is 1 sigma accuracy specification, R99 is 3 sigma (99.7%).

