

Provided by:

 **Advanced Test
Equipment Rentals**

www.atecorp.com
(800) 404-ATEC



A4900 VIBRIO M

VIBRATION METER, ANALYZER, DATA COLLECTOR

 **ADASH AMERICA**

MASTER THE LANGUAGE OF YOUR MACHINERY



A4900 VIBRIO M

VIBRATION METER, ANALYZER,
DATA COLLECTOR

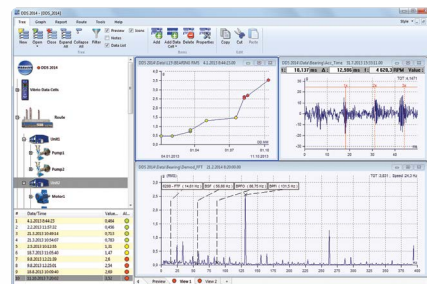
The A4900 - Vibrio M instrument allows you to perform all basic vibro-diagnostics measurements such as bearing condition, identification of mechanical faults and lubrication assessment.

The A4900 - Vibrio M is equipped with 4MB of memory for data storage. Data memory allows you to perform off-route and route measurements. The professional software DDS for Vibrio M can be downloaded from the Adash website free of charge.

Our expert system for automatic machine fault detection is included.



Free version of DDS software
(limited database size)



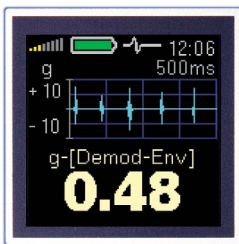
- > Quality sensor
- > Solid coiled cable
- > Strong magnetic base

MEASUREMENTS

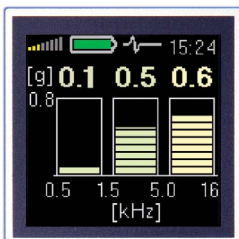
- › ISO value [mm/s, ips]
- › Bearing value [g]
- › ISO 10816-3 included
- › Automatic speed detection



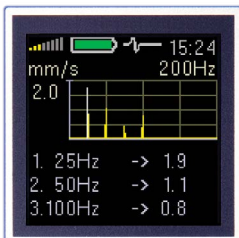
Overall values



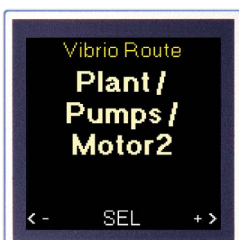
Time signal



Frequency bands



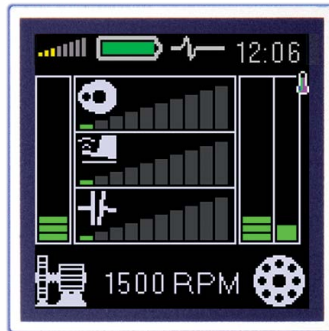
FFT Spectrum



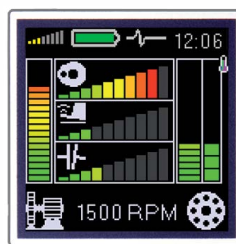
Route measurement

EXPERT SYSTEM

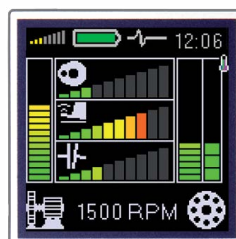
- › Enables automatic machine fault detection on site



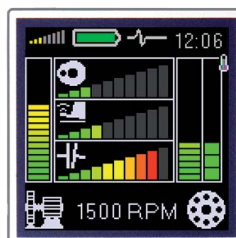
Machine OK



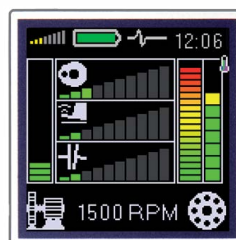
Unbalance



Looseness



Misalignment



Bearing fault



SIMPLE TO USE

- › Three button operation
- › All functions are predefined
- › Expert functions for fault detection
- › Colour graphic display



TOP PANEL

- › ACC ICP® - sensor input
- › IR non-contact temperature sensor
- › LED stroboscope
- › Stethoscope output
- › Micro USB for data transfer



INDUSTRIAL DESIGN

- › Heavy-Duty aluminium case
- › 2AA rechargeable or AA alkaline batteries
- › 8 hours of operation

A4900 VIBRIO M TECHNICAL SPECIFICATIONS:

Input:	1 x ICP® powered accelerometer
Input range:	60 g PEAK with standard 100 mV/g sensor (e.g. 600 g PEAK for 10 mV/g sensor, the sensitivity is editable in the unit)
Measurements:	Velocity RMS: 10 - 1000 Hz [mm/s, ips] Velocity PEAK: 10 - 1000 Hz [mm/s, ips] Acceleration RMS: 500 - 16 000 Hz [g] Acceleration Peak: 500 - 16 000 Hz [g] Velocity time: 1 - 1000 Hz [mm/s, ips], 2048 samples * Velocity spectrum: 1 - 1000 Hz [mm/s, ips], 800 lines Acceleration time: 1 - 16 000 Hz [g], 2048 samples* Acceleration spectrum: 1 - 16 000 Hz [g], 800 lines* Acceleration Demod-Envelope RMS: 500 - 16 000 Hz [g] Acceleration Demod-Envelope Peak: 500 - 16 000 Hz [g]* Acceleration Demod-Envelope time: 500 - 16 000 Hz [g], 2048 samples Acceleration Demod-Envelope spectrum: 500 - 16 000 Hz [g], 800 lines, range 400 Hz* Displacement RMS: 2 - 100 Hz [µm, mil] Displacement O-Peak: 2 - 100 Hz [µm, mil] Displacement Peak-Peak: 2 - 100 Hz [µm, mil] Temperature non-contact measurement: 0 - 380°C (32 - 716°F)
Other functions:	LED stroboscope (0.17-300 Hz, 10 - 18 000 RPM) LED torch Vibration stethoscope
Memory:	4 MB for data 900 measurements of 800 line spectra or 2048 sample time signals may be stored
Data storing:	Off-Route Route with DDS software for Vibrio M (free download)
Interface:	USB 2.0 compatible
Software:	Free version of DDS software (limited database size)
Display:	Colour graphic OLED display 128x128 pixels, diagonal 1.5" (38 mm)
Output:	1 x AC signal 8 Ω / 0,5 W for external headphones (signal listening)
Power:	2 x AA 1.5V batteries (alkaline, NiMH, Lithium - 8 hours of operation)
Temperature:	Operating: -5°C to 55°C
Dimensions:	150 x 60 x 35 mm
Weight:	330 g including batteries (without cable, sensor and magnet) 540 g including batteries, cable, sensor and magnet
Accessories:	vibration sensor, coiled cable to connect vibration sensor, magnetic base for vibration sensor, headphones with 3.5 mm jack, USB cable, measuring tip for manual pressure on the sensor, transport case, USB flash disc with the manual

*available in DDS software for Vibrio



CONTACT US

Toll Free: 1-888-817-4335

Fax: 480-393-4830

www.adashamerica.com

info@adashamerica.com

MASTER THE LANGUAGE OF YOUR MACHINERY