



# Advanced Test Equipment Corp.

www.atecorp.com 800-404-ATEC (2832)

## Q-TRAK™ XP INDOOR AIR QUALITY MONITOR MODEL 7585

The Q-Trak™ XP Indoor Air Quality Monitor Model 7585 combines multiple gas and particle measurements into a single lightweight, handheld instrument that is easy to use, configure and calibrate in the field. Designed for IAQ and industrial hygiene professionals, the Q-Trak XP™ Indoor Air Quality Monitor can perform a wide range of indoor air quality assessments. The powerful, compact multi-sensor module is equipped to measure up to 21 IAQ parameters. Export data in a single file for easy graphing and analysis.



### Features and Benefits

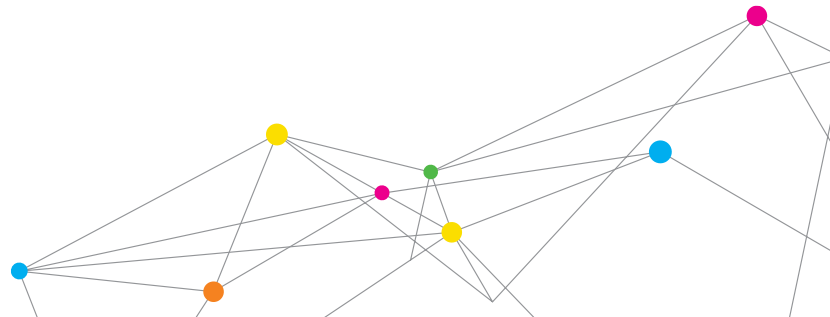
- + Simultaneously measures and logs up to 20 IAQ parameters, including mass concentration and gas – in one instrument
- + Measures PM1, PM2.5, PM10 size fractions and particle concentration
- + Accommodates up to 6 optional, pre-calibrated gas sensors
- + Built-in % of outdoor air workflow
- + Field calibration and replacement of sensors, minimizing downtime
- + Monitor temperature and relative humidity with wet bulb and dew point calculations
- + Real-time temperature and barometric pressure density compensation for TVOC and CO<sub>2</sub>
- + Large touch-screen with intuitive navigation
- + Export data remotely with Wi-Fi connectivity

### Ideal For

- + Commercial and office buildings
- + Schools and universities
- + Building commissioning (i.e., LEED, USGBC, WELL)
- + Hospitals and healthcare facilities
- + Public buildings and shopping centers
- + Transportation hubs (airports, bus and train depots)



UNDERSTANDING, ACCELERATED



## TrakPro™ Ultra Software

The Q-Trak™ XP Indoor Air Quality Monitor includes the new TrakPro™ Ultra software. From the dashboard of this new software, users can connect directly to the instrument, to download and graph data for analysis.

### Data Collection and Reporting

Expanded data logging capacity of the Q-Trak XP Indoor Air Quality Monitor coupled with the included TrakPro™ Data Analysis Software provides the capabilities to work effectively and efficiently as you move from data collection to report generation.

The Q-Trak XP Indoor Air Quality Monitor can store over 100 days of data collected at one-minute log intervals. TrakPro Ultra allows for seamless transfer to your PC, so stored data can be recalled, reviewed on screen, and downloaded for data analysis, graphing and exporting for building reports. This software is useful for analyzing long term, unattended data logging studies common in IAQ investigations.

Wi-Fi wireless connection connects the TrakPro Ultra software on your PC directly to the Q-Trak XP Indoor Air Quality Monitor or via a local network to capture and download data remotely.

- + Simple and fast data transfer / download from Q-Trak XP Indoor Air Quality Monitor to PC
- + Review and graph multiple parameters to investigate trends
- + User-define graph parameters for data analysis
- + Review data charts of defined parameters
- + Graph creation for generating reports
- + Instrument programming



## Gas Sensor Options

The Q-Trak™ XP Indoor Air Quality Monitor Model 7585 can be configured to monitor a variety of gases. A total of 6 sensors can be installed and used at one time, with the ability to mix-and-match. Please note, the Model 7585 kit includes one carbon dioxide sensor.

All sensors are pre-calibrated and include a certificate of calibration.

<b>Carbon Dioxide Sensor (CO<sub>2</sub>) - 801399</b>	
Sensor Type	NDIR (Nondispersive Infrared)
Range	0 - 5000 ppm
Accuracy <sup>2</sup>	± 50 ppm
Resolution	1 ppm
Response Time (t90)	< 40s @ 20°C ambient

<b>TVOC Sensor (ppb) - 801408</b>	
Sensor Type	PID (Photo Ionization Detector)
Range	0 - 20,000 ppb
Accuracy <sup>1,2</sup>	± 3% of reading ± 1 ppm
Resolution	0.01 ppm
Response Time (t90)	<3 seconds

<b>Formaldehyde Sensor (H<sub>2</sub>CO) - 801409</b>	
Sensor Type	Electrochemical
Range	0-10 ppm
Accuracy	± 0.3 ppm
Resolution	0.01 ppm
Response Time (t90)	< 90 seconds

<b>Chlorine Sensor (CL) - 801400</b>	
Sensor Type	Electrochemical
Range	0-20 ppm
Accuracy	± 0.3 ppm
Resolution	0.01 ppm
Response Time (t90)	< 60 seconds from zero to 10ppm

<b>Nitrogen Dioxide Sensor (NO<sub>2</sub>) - 801405</b>	
Sensor Type	Electrochemical
Range	0-20 ppm
Accuracy	± 0.5 ppm
Resolution	0.01 ppm
Response Time (t90)	< 80 seconds from zero to 2ppm

<b>Hydrogen Sulfide Sensor (H<sub>2</sub>S) - 801402</b>	
Sensor Type	Electrochemical
Range	0-50 ppm
Accuracy	± 0.5 ppm
Resolution	0.01 ppm
Response Time (t90)	< 60 seconds from zero to 2ppm



<b>Carbon Monoxide Sensor (CO) - 801401</b>	
Sensor Type	Electrochemical
Range	0-400 ppm
Accuracy	± 2% of reading ± 1 ppm
Resolution	0.1 ppm
Response Time (t90)	< 30 seconds from zero to 10ppm

<b>TVOC Sensor (ppm) - 801407</b>	
Sensor Type	PID (Photo Ionization Detector)
Range	0-2000 ppm
Accuracy <sup>1,2</sup>	0-20 ppm: ±3% of reading ±1ppm 20-250 ppm: ± 1ppm 250-2000 ppm: ± 20 ppm
Resolution	0.1 ppm
Response Time (t90)	<3 seconds

<b>Ozone Sensor (O<sub>3</sub>) - 801406</b>	
Sensor Type	Electrochemical
Range	0-20 ppm
Accuracy	± 0.3 ppm
Resolution	0.01 ppm
Response Time (t90)	< 80 seconds from zero to 1ppm

<b>Ammonia Sensor (NH<sub>3</sub>) - 801403</b>	
Sensor Type	Electrochemical
Range	0-100
Accuracy	± 1 ppm
Resolution	0.1 ppm
Response Time (t90)	< 45 seconds

<b>Nitric Oxide Sensor (NO) - 801404</b>	
Sensor Type	Electrochemical
Range	0-20 ppm
Accuracy	± 0.2 ppm
Resolution	0.1 ppm
Response Time (t90)	< 25 seconds from zero to 2ppm



t90: Time to achieve 90% of the actual concentration

<sup>1</sup> TVOC accuracy statement based on factory testing with isobutylene

<sup>2</sup> CO<sub>2</sub> and TVOC accuracies based on density correction activated

Inside the multi-sensor module

# SPECIFICATIONS

## Q-TRAK™ XP INDOOR AIR QUALITY MONITOR MODEL 7585

The Q-Trak™ XP Indoor Air Quality Monitor Model 7585 arrives from the factory with the following preset technical specifications.

### Particles

Sensor Type	Optical Particle Counter (OPC)
Particulate Mass (PM)	PM1.0, PM2.5, PM10
Range	0 to 500 $\mu\text{g}/\text{m}^3$
Accuracy	$\pm 10\mu\text{g}/\text{m}^3$ (0 - 100 $\mu\text{g}/\text{m}^3$ ), $\pm 10\%$ of reading 100 - 500 $\mu\text{g}/\text{m}^3$
PM Resolution	1 $\mu\text{g}/\text{m}^3$ , 0.001 $\text{mg}/\text{m}^3$
PM Units	$\mu\text{g}/\text{m}^3$ , $\text{mg}/\text{m}^3$
Particle Concentration (PC)	PC0.3, PC0.5, PC1.0, PC2.5, PC5.0, PC10.0
PC Resolution	0.01/ $\text{cm}^3$
PC Units	$\#/\text{cm}^3$
Response Time	<10 seconds

### Carbon Dioxide

Sensor Type	Nondispersive Infrared (NDIR)
Range	0 - 5000 ppm
Accuracy	$\pm 50$ ppm
Resolution	1 ppm
Response Time (t90)	< 40s @ 20° C ambient

### Temperature

Range	32 - 140°F (0 - 60° C)
Accuracy	$\pm 1.0^\circ\text{F}$ (0.5° C)
Resolution	0.1°F (0.1° C)
Response Time (t90)	< 15 seconds to 90% of final value

### Relative Humidity

Sensor Type	Capacitance
Range	0 - 100% RH
Accuracy	$\pm 3\%$ RH
Resolution	0.1 % RH
Response Time (t63)	8 Seconds to 63% of final value

**This instrument is not designed for confined spaces in which respirators may be required, or in hazardous and/or explosive environments.**

Specifications are subject to change without notice.

TSI and the TSI logo are registered trademarks of TSI Incorporated.



UNDERSTANDING, ACCELERATED

TSI Incorporated - Visit our website [www.tsi.com](http://www.tsi.com) for more information.

<b>USA</b>	<b>Tel:</b> +1 800 874 2811	<b>India</b>	<b>Tel:</b> +91 80 67877200
<b>UK</b>	<b>Tel:</b> +44 149 4 459200	<b>China</b>	<b>Tel:</b> +86 10 8219 7688
<b>France</b>	<b>Tel:</b> +33 1 41 19 21 99	<b>Singapore</b>	<b>Tel:</b> +65 6595 6388
<b>Germany</b>	<b>Tel:</b> +49 241 523030		

### Barometric Pressure

Range	7.7 - 37.2 in hg (196.0 - 945.0 mmHg)
Accuracy	$\pm 0.12$ inHg ( $\pm 3.0$ mmHg)
Resolution	0.01 in hg (0.1 mmHg)
Response Time (t63)	>2 seconds to 63% of final value

### Operating Parameters

Logging Capability	75,000,000 data points
Operating Temperature	40 - 105° F (5 - 40° C)
Storage Temperature	-4 - 60° F (-20 - 60° C)
Meter Dimensions	3.8 in. $\times$ 8.3 in. $\times$ 2.1 in. (9.7 cm $\times$ 21.1 cm $\times$ 5.3 cm)
Weight with Batteries	1.2 lbs./0.55 kg
Power Requirements	Li-ion rechargeable battery pack or universal AC adapter - both included
Languages Supported	English, German, French, Traditional and Simplified Chinese

### The Q-Trak™ XP Indoor Air Quality Monitor Model 7585 kit includes:

Handheld unit with multi-sensor IAQ module (includes sensors for temperature, relative humidity, barometric pressure, particle mass concentration, plus open slots for six different types of gases)

- + CO<sub>2</sub> gas sensor
- + Carrying case
- + Power supply
- + Calibration certificate
- + Li-ion battery pack
- + Gas calibration cap
- + Communication cable
- + Manual
- + TrakPro Ultra Software (download)

### Optional Accessories

Specify	Description
801430	Multi-Sensor IAQ Module with PM 2.5, T, RH, BP, and 6 open sensor slots for expansion
800125	Battery cover with tripod mount
800128	Q-Trak XP Tabletop Tripod
800129	Q-Trak XP Battery Cover with Tripod Mount and Tabletop Tripod
800124	Wi-Fi Dongle