

Skid-less and Skidded Surface Roughness Tester - Qualisurf III

<http://www.worldoftest.com/skidless-and-skidded-surface-roughness-tester-qualisurf-iii>

Features

- Equipped with 55 roughness parameters
- Conform to ISO/DIN/ ANSI/JIS standards.
- Measurement of roughness, waviness and primary profile with a wide measuring range.
- 5% accuracy and Repeatability 3%
- Skid-less and Skidded pickup makes it so efficient to evaluate curved surface roughness.
- Integrated design for convenient using.
- Operating with advanced powerful software program
- Outputting of data to PC by using USB or RS232 cable



Technical Specifications

Model	Description
Assessed Profile	R (Roughness), W (Waviness), P (Primary profile)
Measuring Range	800µm, 80µm, 8µm
Filtering	RC, PCRC, Gauss, D-P, ISO 13565
Evaluation Parameters	<ul style="list-style-type: none"> ▪ R: Ra, Rp, Rv, Rt, Rz, Rq, Rsk, Rku, Rc, RS, RSm, Rlo, RHSC, Rpc, Rmr(c), RzJIS, R3y, R3z ▪ W: Wa, Wp, Wv, Wt, Wz, Wq, Wsk, Wku, Wc, WS, WSm, Wlo, WHSC, Wpc, Wmr(c), WzJIS ▪ P: Pa, Pp, Pv, Pt, Pz, Pq, Psk, Pku, Pc, PS, PSm, Plo, PHSC, Ppc, Pmr(c), PzJISRk: Rk, Rpk, Rvk, Mr1, Mr2
Cut off Length	0.08mm, 0.25mm, 0.8mm, 2.5mm, 8mm
Max. Driving Length	40mm
Analysis Graphs	ADC, BAC
Evaluation Length	1L-5L
Resolution	0.0001µm/8µm
Display	LCD
Memory	10 groups of primary data
Data Output	USB, RS232
Power Supply	Li battery / AC adapter
Dimensions	409 × 96 × 98mm
Weight	2.3Kg

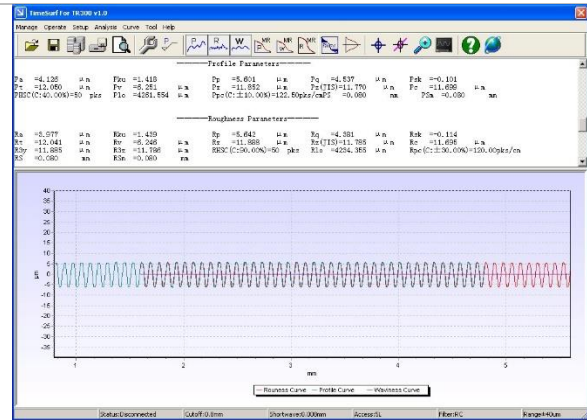
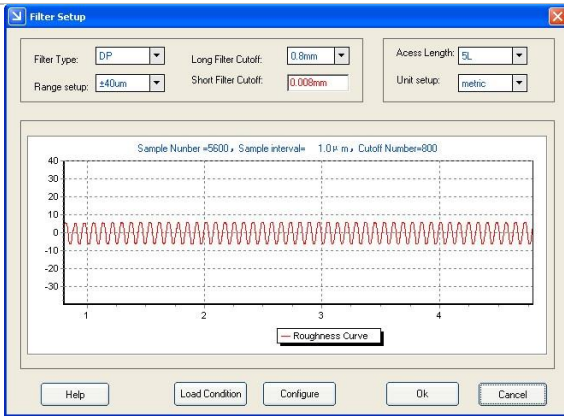


Standard Configurations

- Main unit
 - Pickup transducer probe
 - Roughness test block
 - Calibration certificate
 - Software program
- USB and RS232 cable
 - Power adapter 9V/4A
 - Instruction manual
 - Carrying case

Software

The software program does measuring, analyzing, printing and searching measured data and graphs

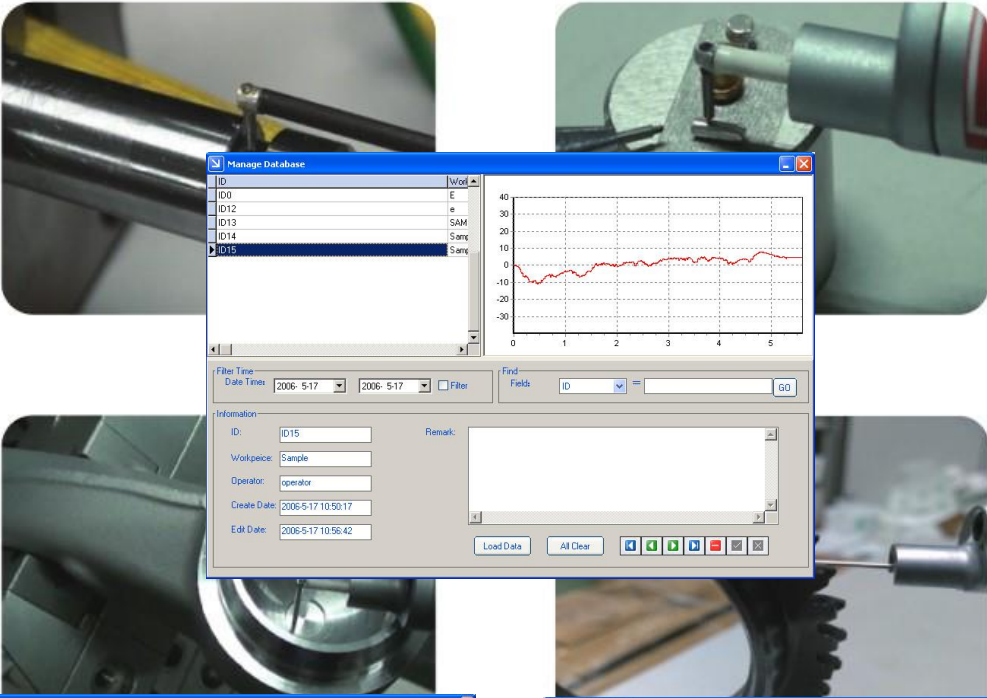


Operator is allowed to perform evaluation of mean value, max. value, min. value, standard deviation and variance by moving mouse. And the calculation results can be stored in a default Excel file or in a Excel file specified by user

Statistic Information	Average	Minimum	Maximum	Standard Deviation	Variance
Pa	1.92	0.32	4.13	1.61	7.78
Pku	1.75	1.35	2.47	0.51	0.79
Pp	2.48	0.46	5.60	2.24	15.07
Pq	2.15	0.35	4.54	1.76	9.27
Psk	-0.10	-0.24	0.04	0.11	0.04
Pt	6.50	0.93	12.05	4.54	61.82

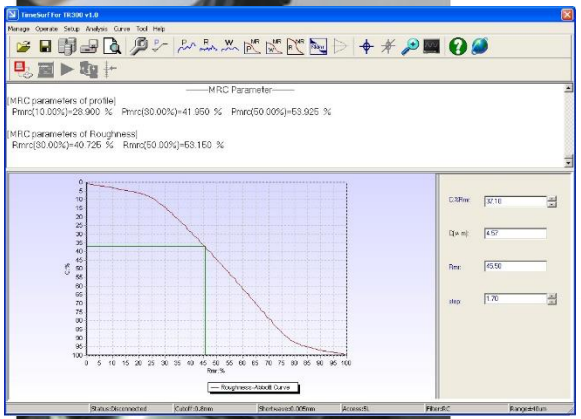
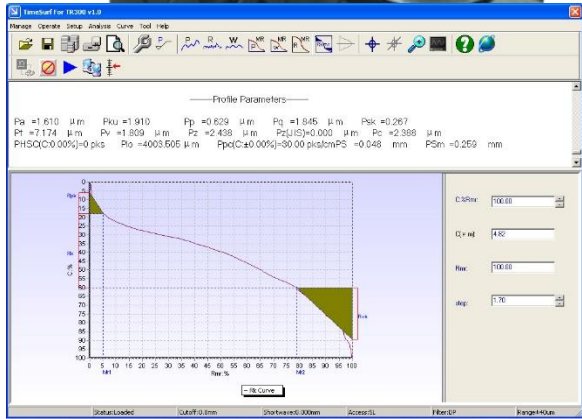
Equipped with powerful data management function. The collected data can be stored as a file or stored in database for user's searching and browse.





Variety of c
graphs, figu

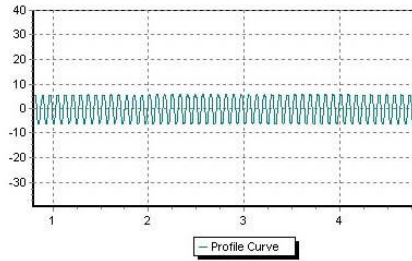
ws (including



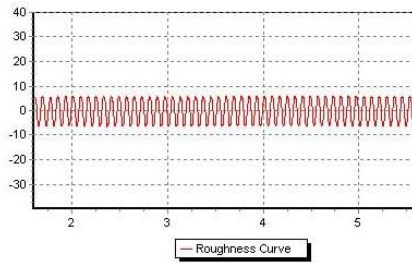
Printing fun
parameters

e curves and

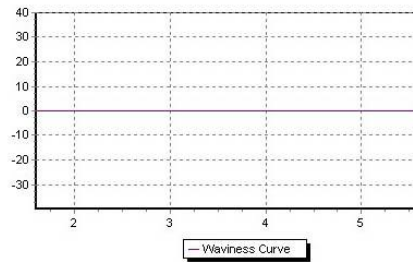




Pa =4.126 μm
Pku =1.418
Pp =5.601 μm
Pq =4.537 μm
Psk =-0.101
Pt =12.050 μm
Pv =6.251 μm
Pz =11.852 μm
Pz(JIS)=11.770 μm
Pc =11.699 μm
PHSC(C:0.00%)=0 pks
Plo =4261.554 μm



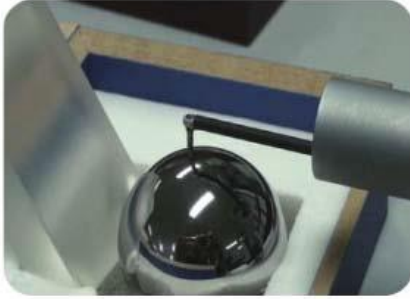
Ra =4.051 μm
Rp =5.768 μm
Rq =4.464 μm
Rsk =-0.121
Rt =12.319 μm
Rv =6.365 μm
Rz =12.152 μm
Rz(JIS)=12.050 μm
Rc =11.960 μm
R3y =12.134 μm
R3z =12.044 μm
RHSC(C:0.00%)=0 pks
Rlo =4247.272 μm
Rpc(C:±0.00%)=122.50pks/cm



Wa =0.034 μm
Wku =2.705
Wp =0.016 μm
Wq =0.040 μm
Wsk =1.466
Wt =0.149 μm
Wv =0.025 μm
Wz =0.042 μm
Wc =0.025 μm
WHSC(C:0.00%)=0 pks
Wlo =3999.003 μm
Wpc(C:±0.00%)=45.00 pks/cm

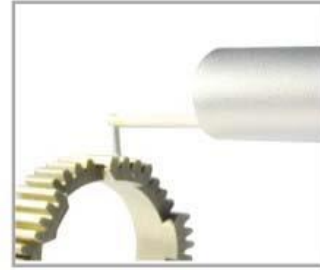


Operation and Accessories





3230 standard pick up



S230V pick up (7mm changeable diameter)



S230U pick up (7mm)



S231 pick up for tooth surface (120° probe)



S232 pick up for small hole (ø1.33)



S233 pick up for deep groove (10mm)



S236 pick up for extra deep groove (20mm)



S238 pick up for super deep groove (30mm)



Prices

Part No.	Description	Unit Price
Qualisurf-III	Skid-less and Skidded Surface Roughness Tester - Qualisurf III <ul style="list-style-type: none"> ▪ Assessed Profile: R (Roughness), W (Waviness), P (Primary profile) ▪ Measuring Range: 800µm, 80µm, 8µm Standard Configurations <ul style="list-style-type: none"> • Main unit • Pickup transducer probe • Roughness test block • Calibration certificate • Software program □ • USB and RS232 cable • Power adapter 9V/4A • Instruction manual • Carrying case 	\$ 7,500.00 US
S230	Standard Pickup Transducer	\$ 1,850.00 US
S230V/U	S230V/U pick up transducer	\$ 1,950.00 US
S231	S231 pick up transducer for gear tooth surface (120 deg probe):	\$ 1,950.00 US
S232	S232 pick up transducer for small hole (dia. 1.33mm)	\$ 1,950.00 US
S233	S233 pick up transducer for deep groove (10mm)	\$ 1,950.00 US
S236	S236 pick up transducer for extra deep groove (20mm)	\$ 1,950.00 US
S238	S238 pick up transducer for super deep groove (30mm)	\$ 1,950.00 US
S239	S239 pick up transducer for super deep groove (40mm)	\$ 1,950.00 US
TA650	Measuring stand (Including marble stand, durable fixture with XY adjustment, parallel vise and V-block, 600 x 420 x 80mm) Specifications: <ul style="list-style-type: none"> • Y-axial range: 300 ± 1 mm • The dimension of measuring platform: 600mm x 420mm x 80mm • Adjusting range of levelling table • X-axial direction: ±12.5 mm • Y-axial direction: ±12.5 mm • Rotation: 360°; fine adjustment: ±5° • Pitching: 0° ~ 5° 	\$ 2,850.00 US

Please Note

Qualitest is always dedicated to the innovation and improvement of product performance and function. Therefore, technical specifications are subject to change without further notice. Please visit our website at www.worldoftest.com for the latest updates. Qualitest reserves the rights of final interpretation and revision

Note : Prices for accessories are valid only when ordered with the main unit
 Prices : Ex Works Plantation FL, USA / Richmond Hill, ON, CA / or nearest Distribution Center – depending upon availability
 Delivery : Approx. 2 - 4 weeks depending on stock availability
 Warranty : 12 months limited

