



Advanced Test Equipment Corp.
www.atecorp.com 800-404-ATEC (2832)

TESTRANO 600

Three-phase test system for
comprehensive power transformer testing



One system for multiple tests on power transformers: TESTRANO 600

Touch-and-Test with TESTRANO 600

TESTRANO 600 is the world's first portable, three-phase test system which supports all common electrical tests on power transformers.

Compared to conventional single-phase test sets the three-phase capabilities of TESTRANO 600 offer several advantages:

- > One setup can be used to perform various tests
- > The rewiring effort is significantly reduced
- > Testing time can be cut down to a third of the time
- > Increased safety as less trips up and down are needed

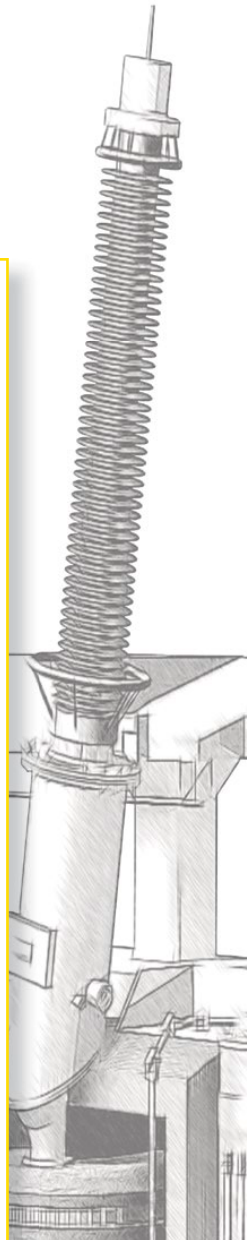
TESTRANO 600 provides you with a convenient way of testing to gain a comprehensive insight into the condition of every part of your power transformer. It can be operated using TESTRANO TouchControl on the integrated display, or by using our Primary Testing Manager™ software on your laptop. This makes it ideal for routine and diagnostic testing onsite or during factory acceptance tests (FAT).

Your benefits

- > True three-phase power transformer test set
- > Powerful device with 3 x 33 A DC or 400 V AC
- > Reduced wiring effort as same wiring can be used for different tests
- > Three times faster testing
- > Automatic tap changer control and measurement, no accessory required
- > Fast and reliable demagnetization of transformer's core

www.omicronenergy.com/TESTRANO-600





TRANSFORMER TURNS RATIO

Transformer turns ratio (TTR) measurements verify the operating principle of a power transformer to detect shorted turns and open-circuited conditions.

EXCITING CURRENT

Exciting current measurements are performed to assess the turn-to-turn insulation of the windings, the magnetic circuit of a transformer as well as the tap changer. In order to perform this test with 10 kV, the CP TD1 is required.

DC WINDING RESISTANCE

DC winding resistance measurements are used to assess contact problems of the windings and tap changers.

DYNAMIC RESISTANCE

Dynamic resistance measurements (DRM) are used to check the on-load tap changer (OLTC) for poorly maintained and damaged OLTC contacts.



SHORT-CIRCUIT IMPEDANCE / LEAKAGE REACTANCE

Leakage reactance / short-circuit impedance measurements are sensitive methods to assess possible deformation or displacements of windings.



FREQUENCY RESPONSE OF STRAY LOSSES

The frequency response of stray losses (FRSL) test identifies short-circuits between parallel strands and local overheating due to excessive eddy current losses.



DEMAGNETIZATION

Demagnetization of the core is recommended after DC has been applied, e.g. during winding resistance tests. The risk of high inrush currents during energization, and influences on other tests are reduced.



POWER / DISSIPATION FACTOR (with CP TD1)

Power/dissipation factor and capacitance measurements are performed to investigate the insulation of power transformers and bushings.

TESTRANO 600: One system – multiple tests

The newly designed, powerful and compact three-phase power transformer test set, weighing 20 kg / 44 lbs.



Three-phase solution to speed up and simplify power transformer

Your advantages of true three-phase testing:

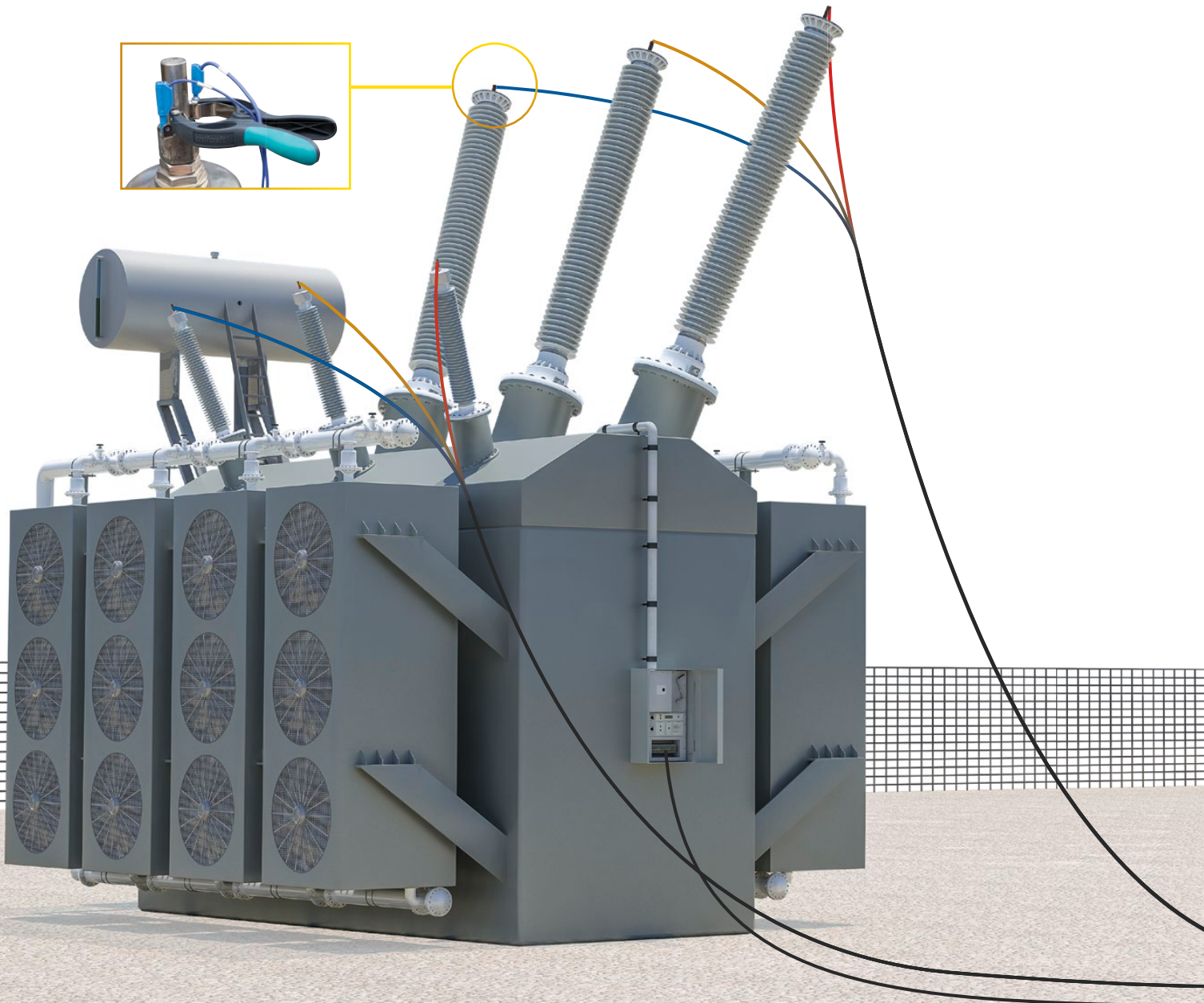
- > Rewiring effort is significantly reduced
- > Speeds up testing because all three phases are energized at once
- > Fully automated control of tap changer during the test
- > Verify the phase shift of any winding configuration

Three wires are all you need

TESTRANO 600 is connected to the high-voltage and low-voltage side of the transformer by using specially designed multi-purpose cables.

The cables, which support a 4-wire (Kelvin) connection, only have to be connected once at the transformer's terminals. Then all test outputs and measurement inputs are automatically controlled by TESTRANO 600 without the need to change the connection again.

To automatically switch between different tap positions of an on-load tap changer (OLTC), a multiplug cable can be connected. This cable can also be used to record motor current and voltage of the OLTC.



testing

Three powerful sources

The compact and powerful design with three integrated sources enables you to perform high accuracy measurements in a fraction of the time required by other solutions:

- > 3-phase transformer turns ratio with 400 V L-L
- > 3-phase winding resistance with 33 A
- > 3-phase short-circuit impedance / leakage reactance
- > Fast demagnetization with 30 A

A wider frequency range

Standard power / dissipation factor measurements at line frequency can only detect the effects of moisture and aging at an advanced stage.

By combining TESTRANO 600 with CP TD1*, you can perform measurements across a frequency range from 15 Hz to 400 Hz. This increases the sensitivity of the test and enables you to detect problems much earlier than with the standard measurement.

* CP TD1 is an optional accessory to the TESTRANO 600. See more details on page 11.

Active discharge and fast demagnetization

The active discharge function (patent pending) of TESTRANO 600 automatically discharges the winding within a matter of seconds, e.g. after resistance measurements have been performed. This speeds up testing time and increases the safety for the tester

With TESTRANO 600, you can quickly demagnetize the transformer's core before and after testing. This reduces the risk of high inrush currents during energization and of influences of a magnetized core on other tests.

Safety first

TESTRANO 600 follows the "safety first" principles and fulfills the highest safety standards by providing an emergency stop button as well as safety and warning lights.

Another example are the custom-designed connector plugs which prevent you from connecting the wrong outputs. In addition, the simple wiring concept with labeled connection leads, leaves almost no room for errors.

Rugged and compact design

With TESTRANO 600 you get all the required components in just one box. This makes testing quite comfortable and the system, weighing only 20 kg / 44 lbs, easy to transport. The rugged design makes it ideal for on-site testing as well as in rough environments.

The intuitive side panel and color coded cables of TESTRANO 600 make it easy to connect the test set for safe and reliable measurements.



TESTRANO TouchControl – Easy test preparation and fast test execution

TESTRANO 600 can be operated in multiple ways:

- > TESTRANO TouchControl, using the integrated touch display for fast and easy test workflow on the device
- > Primary Test Manager™ software on your laptop for guided test workflow including easy data management and automatic result assessment.

Both solutions support all diagnostic tests on power transformers.

TESTRANO TouchControl features an integrated, high-resolution, multi-touch display.

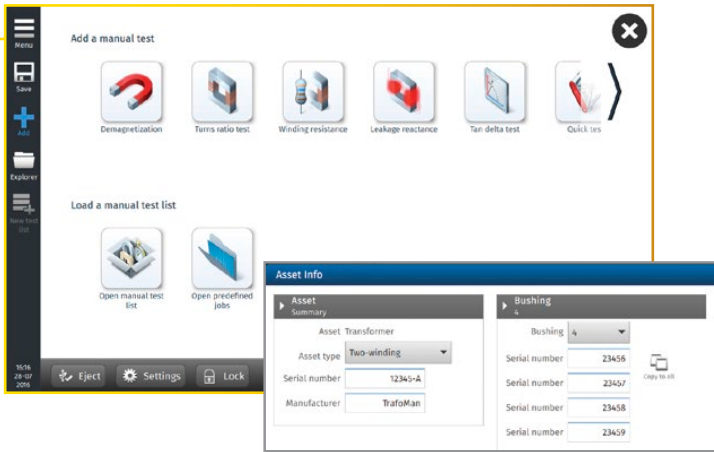
The high contrast of the 10.6" display ensures good visibility even in bright sunlight.

This allows fast, flexible and easy testing without bringing a laptop PC onsite.

The USB interface can be used to import and export test files to and from TESTRANO 600.

This can be used to prepare complex tests in advance and just import them onsite.

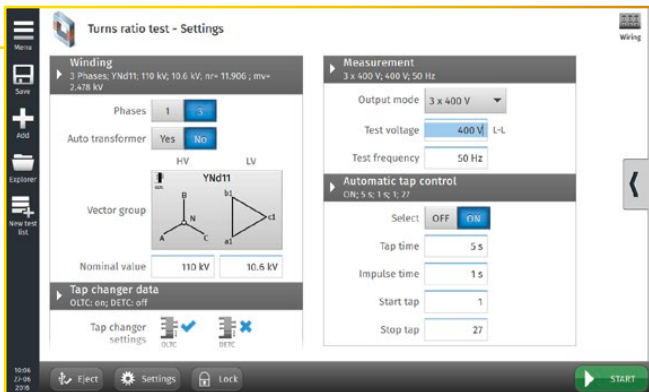




Easy handling during test preparation

During operation with TESTRANO TouchControl, you can choose between creating a new, manual test or loading an already prepared test.

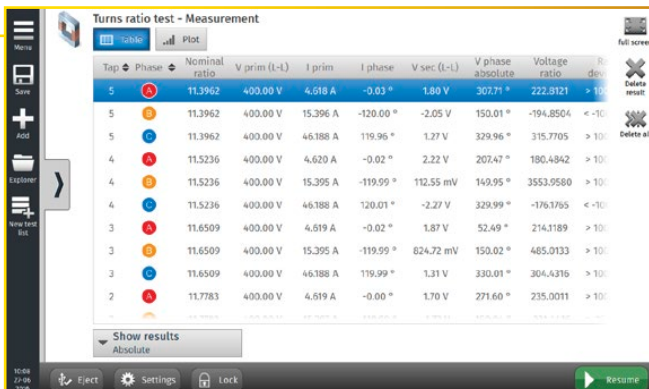
In order to identify your asset and keep your testing results organized, you can enter basic transformer nameplate information before starting your test.



Best possible support during test preparation and execution

Each test follows an intuitive two-step workflow. You can set the measurement parameters on the "Settings" screen and press "Start". You can then review the results on the "Measurement" screen.

Pre-configured wiring diagrams, that depend on the selected vector group of your power transformer, assist you with setting up the test equipment in the correct manner. This minimizes the likelihood of measurement errors and speeds up your testing process.



Handy features for comparison and detailed analysis

Test results are available as a table and in graphical form to provide you with the best possible overview on your test results.

You can easily re-order the lines of the table when making phase-to-phase or tap-to-tap comparisons. You can also switch between different result plots, e.g. one showing the absolute values and another showing the deviation to nameplate values.

In order to create customized reports, you can export tests to our Primary Test Manager™.

Primary Test Manager™ – Guided testing with easy data management

The Primary Test Manager™ (PTM) is the ideal software tool for the diagnostic testing and condition assessment of your power transformers.

It supports you in performing measurements and guides you step by step through the entire test procedure, in order to make testing faster, easier, and safer.

Management of location, asset and test data

PTM provides a well-structured database for managing all related transformer data to get a comprehensive overview of your asset's condition. You can define and manage locations, assets, jobs and reports in an easy and fast way.

Data synchronization and back-up

During on-site testing, data is often generated by multiple testing teams. With the 'PTM DataSync' module, you can synchronize all data to a central database hosted on premises or in the cloud. In doing so, data synchronization and storage becomes safer and more convenient. You can select the relevant locations in order to keep the local database small.

Name	Address	City	Postal	Serial no.	Asset	Asset type	Name/WO	Tested by	Creation date	File	Client	Date
All												
642				0208021	Running	With test tag	2013-06-12J MW-8ra	19/09/2013	10			16/09/2013
Rayson 3A				0208022	Running	With test tag	2013-07-17J MW-8ra	19/09/2013	10			16/09/2013
Cer & Duff				0208023	Running	With test tag	2013-08-09J MW-8ra	19/09/2013	10			16/09/2013
CircuitBreakerLoco				0208024	Running	With test tag	2013-08-13J MW-8ra	19/09/2013	10			16/09/2013
Dewbank				02-200702	Running	With test tag	2013-08-13J MW-8ra	19/09/2013	10			16/09/2013
Dave				03-203723	Running	With test tag	2013-08-13J MW-8ra	19/09/2013	10			16/09/2013
Same Location				06-200701	Running	With test tag	05-10-2011 31 VILAR JOHN JOSÉ CARO	9/22/2011	17			9/22/2011
Fish River				020200512	Running	With test tag	02-28-2011 ENKARDI ADELINCA LUIS C	9/22/2011	17			9/22/2011
Indy				300000387	Running	With test tag	09-23-2011 1	9/22/2011	36			16/09/2013
Interpark				000000080	Running	With test tag	04-16-2011 1	9/22/2011	47			15/05/2011
Interpark Focus				100000086	Running	With test tag	04-16-2011 2nd Dem. Typ Tester	9/22/2011	47			1/05/2011
Location 2.0	Address 2.0	Stadt 2.0	PLZ	1000000739	Running	With test tag	04-27-2011 1	4/27/2012	40			10/09/2012
Novel				1000000096	Running	With test tag	05-28-2011 1	9/22/2011	51			11/12/2012
ODC				1000001210	Running	With test tag	05-25-2011 1	9/22/2011	51			11/12/2012
OSTER CHIEF				000000118	Running	With test tag	07-05-2011 10M4	9/22/2011	77			10/11/2012
Reverbia				1150000044	Running	With potential tag	10-20-2011 Job 1	19/09/2013	10			9/22/2011
Roisa - 3PT Fenc				117	Running	With potential tag	10/28/2013 Job 2	19/09/2013	10			9/22/2011
Sample Location				117822	Running	Without tag	10/06-2013 Sample 1	11/10/2011	10			9/22/2011
Spore location				117873	Running	Without tag	10-18-2012 2nd Intra	11/12/2012	10			9/22/2011
Station Skopje				117874	Running	Without tag	10-18-2012 3rd Intra	11/12/2012	10			9/22/2011
T-2 CT BARRAC				117876	Running	Without tag	10-18-2012 4th Intra	10/10/2012	10			9/22/2011
117878				117878	Running	Without tag	10-18-2011 1	10/10/2012	10			9/22/2011
117877				117877	Running	Without tag	10-20-2011 1	10/10/2012	10			9/22/2011
117882				117882	Running	Without tag	10-24-2011 2nd Intra	10/10/2012	10			9/22/2011
189798				189798	Transformer	Two-winding	12-10-2011 1	9/22/2011	12			16/09/2013
189799				189799	Running	With test tag	2013-10-21-1 Sample	10/20/2013	10			9/22/2011
221ARXC14568502				221ARXC14568502	Running	With test tag	27/02-2012 Auring 2	2/27/2012	20			9/22/2011
221ARXC14568503				221ARXC14568503	Running	With test tag	27/02-2012 Auring 3	2/27/2012	20			9/22/2011
221ARXC14568504				221ARXC14568504	Running	With test tag	28/10-2011 Auring 1	10/20/2013	30			16/08/2013
221ARXC14568505				221ARXC14568505	Running	With test tag	29/10-2011 Auring 2	10/20/2013	10			16/08/2013
221ARXC14568506				221ARXC14568506	Running	With test tag	2013-10-21-1 Sample	3/20/2013	30			16/08/2013
221ARXC14568507				221ARXC14568507	Running	With test tag	3/20-2013 Job 1	3/20/2013	30			16/08/2013
221ARXC14568508				221ARXC14568508	Running	With test tag	3/20-2013 Job 2	3/20/2013	30			16/08/2013
221ARXC14568509				221ARXC14568509	Running	With test tag	3/20-2013 Job 3	3/20/2013	30			16/08/2013
221ARXC14568510				221ARXC14568510	Running	With test tag	3/20-2013 Job 4	3/20/2013	30			16/08/2013
221ARXC14568511				221ARXC14568511	Running	With test tag	3/20-2013 Job 5	3/20/2013	30			16/08/2013
221ARXC14568512				221ARXC14568512	Running	With test tag	3/20-2013 Job 6	3/20/2013	30			16/08/2013
221ARXC14568513				221ARXC14568513	Running	With test tag	3/20-2013 Job 7	3/20/2013	30			16/08/2013
221ARXC14568514				221ARXC14568514	Running	With test tag	3/20-2013 Job 8	3/20/2013	30			16/08/2013
221ARXC14568515				221ARXC14568515	Running	With test tag	3/20-2013 Job 9	3/20/2013	30			16/08/2013
221ARXC14568516				221ARXC14568516	Running	With test tag	3/20-2013 Job 10	3/20/2013	30			16/08/2013
221ARXC14568517				221ARXC14568517	Running	With test tag	3/20-2013 Job 11	3/20/2013	30			16/08/2013
221ARXC14568518				221ARXC14568518	Running	With test tag	3/20-2013 Job 12	3/20/2013	30			16/08/2013
221ARXC14568519				221ARXC14568519	Running	With test tag	3/20-2013 Job 13	3/20/2013	30			16/08/2013
221ARXC14568520				221ARXC14568520	Running	With test tag	3/20-2013 Job 14	3/20/2013	30			16/08/2013
221ARXC14568521				221ARXC14568521	Running	With test tag	3/20-2013 Job 15	3/20/2013	30			16/08/2013
221ARXC14568522				221ARXC14568522	Running	With test tag	3/20-2013 Job 16	3/20/2013	30			16/08/2013
221ARXC14568523				221ARXC14568523	Running	With test tag	3/20-2013 Job 17	3/20/2013	30			16/08/2013
221ARXC14568524				221ARXC14568524	Running	With test tag	3/20-2013 Job 18	3/20/2013	30			16/08/2013
221ARXC14568525				221ARXC14568525	Running	With test tag	3/20-2013 Job 19	3/20/2013	30			16/08/2013
221ARXC14568526				221ARXC14568526	Running	With test tag	3/20-2013 Job 20	3/20/2013	30			16/08/2013
221ARXC14568527				221ARXC14568527	Running	With test tag	3/20-2013 Job 21	3/20/2013	30			16/08/2013
221ARXC14568528				221ARXC14568528	Running	With test tag	3/20-2013 Job 22	3/20/2013	30			16/08/2013
221ARXC14568529				221ARXC14568529	Running	With test tag	3/20-2013 Job 23	3/20/2013	30			16/08/2013
221ARXC14568530				221ARXC14568530	Running	With test tag	3/20-2013 Job 24	3/20/2013	30			16/08/2013
221ARXC14568531				221ARXC14568531	Running	With test tag	3/20-2013 Job 25	3/20/2013	30			16/08/2013
221ARXC14568532				221ARXC14568532	Running	With test tag	3/20-2013 Job 26	3/20/2013	30			16/08/2013
221ARXC14568533				221ARXC14568533	Running	With test tag	3/20-2013 Job 27	3/20/2013	30			16/08/2013
221ARXC14568534				221ARXC14568534	Running	With test tag	3/20-2013 Job 28	3/20/2013	30			16/08/2013
221ARXC14568535				221ARXC14568535	Running	With test tag	3/20-2013 Job 29	3/20/2013	30			16/08/2013
221ARXC14568536				221ARXC14568536	Running	With test tag	3/20-2013 Job 30	3/20/2013	30			16/08/2013
221ARXC14568537				221ARXC14568537	Running	With test tag	3/20-2013 Job 31	3/20/2013	30			16/08/2013
221ARXC14568538				221ARXC14568538	Running	With test tag	3/20-2013 Job 32	3/20/2013	30			16/08/2013
221ARXC14568539				221ARXC14568539	Running	With test tag	3/20-2013 Job 33	3/20/2013	30			16/08/2013
221ARXC14568540				221ARXC14568540	Running	With test tag	3/20-2013 Job 34	3/20/2013	30			16/08/2013
221ARXC14568541				221ARXC14568541	Running	With test tag	3/20-2013 Job 35	3/20/2013	30			16/08/2013
221ARXC14568542				221ARXC14568542	Running	With test tag	3/20-2013 Job 36	3/20/2013	30			16/08/2013
221ARXC14568543				221ARXC14568543	Running	With test tag	3/20-2013 Job 37	3/20/2013	30			16/08/2013
221ARXC14568544				221ARXC14568544	Running	With test tag	3/20-2013 Job 38	3/20/2013	30			16/08/2013
221ARXC14568545				221ARXC14568545	Running	With test tag	3/20-2013 Job 39	3/20/2013	30			16/08/2013
221ARXC14568546				221ARXC14568546	Running	With test tag	3/20-2013 Job 40	3/20/2013	30			16/08/2013
221ARXC14568547				221ARXC14568547	Running	With test tag	3/20-2013 Job 41	3/20/2013	30			16/08/2013
221ARXC14568548				221ARXC14568548	Running	With test tag	3/20-2013 Job 42	3/20/2013	30			16/08/2013
221ARXC14568549				221ARXC14568549	Running	With test tag	3/20-2013 Job 43	3/20/2013	30			16/08/2013
221ARXC14568550				221ARXC14568550	Running	With test tag	3/20-2013 Job 44	3/20/2013	30			16/08/2013
221ARXC14568551				221ARXC14568551	Running	With test tag	3/20-2013 Job 45	3/20/2013	30			16/08/2013
221ARXC14568552				221ARXC14568552	Running	With test tag	3/20-2013 Job 46	3/20/2013	30			16/08/2013
221ARXC14568553				221ARXC14568553	Running	With test tag	3/20-2013 Job 47	3/20/2013	30			16/08/2013
221ARXC14568554				221ARXC14568554	Running	With test tag	3/20-2013 Job 48	3/20/2013	30			16/08/2013
221ARXC14568555				221ARXC14568555	Running	With test tag	3/20-2013 Job 49	3/20/2013	30			16/08/2013
221ARXC14568556				221ARXC14568556	Running	With test tag	3/20-2013 Job 50	3/20/2013	30			16/08/2013
221ARXC14568557				221ARXC14568557	Running	With test tag	3/20-2013 Job 51	3/20/2013	30			16/08/2013
221ARXC14568558				221ARXC14568558	Running	With test tag	3/20-2013 Job 52	3/20/2013	30			16/08/2013
221ARXC14568559				221ARXC14568559	Running	With test tag	3/20-2013 Job 53	3/20/2013	30			16/08/2013
221ARXC14568560				221ARXC14568560	Running	With test tag	3/20-2013 Job 54	3/20/2013	30			16/08/2013
221ARXC14568561				221ARXC14568561	Running	With test tag	3/20-2013 Job 55	3/20/2013	30			16/08/2013
221ARXC14568562				221ARXC14568562	Running	With test tag	3/20-2013 Job 56	3/20/2013	30			16/08/2013
221ARXC14568563				221ARXC14568563	Running	With test tag	3/20-2013 Job 57	3/20/2013	30			16/08/2013
221ARXC14568564				221ARXC14568564	Running	With test tag	3/20-2013 Job 58	3/20/2013	30			16/08/2013
221ARXC14568565				221ARXC14568565	Running	With test tag	3/20-2013 Job 59	3/20/2013	30			16/08/2013
221ARXC14568566				221ARXC14568566	Running	With test tag	3/20-2013 Job 60	3/20/2013	30			16/08/2013
221ARXC14568567				221ARXC14568567	Running	With test tag	3/20-2013 Job 61	3/20/2013	30			16/08/2013
221ARXC14568568				221ARXC14568568	Running	With test tag	3/20-2013 Job 62	3/20/2013	30			16/08/2013
221ARXC14568569				221ARXC14568569	Running	With test tag	3/20-2013 Job 63	3/20/2013	30			16/08/2013
221ARXC14568570		</										

and automatic result assessment

Execution of diagnostic tests

PTM enables you to control and operate the connected test set directly from a computer. In order to assist you during testing, PTM helps you in defining your transformer with type-specific nameplate views.

Customized test plans

Based on the nameplate values, PTM generates a customized test plan according to current standards and guidelines for each asset. Thereby, PTM provides you with a comprehensive test plan to thoroughly assess the condition of your asset.

By selecting or de-selecting individual tests, you can tailor the test procedure to your specific needs with minimum effort. At the same time, test plans can be configured in advance to enable fast and effective measurements.

Result analysis and reporting

Results are automatically stored and organized in the database on your PC and are available for analysis and reporting. Each test can be automatically assessed according to international standards and guidelines or based on your individual limit values.

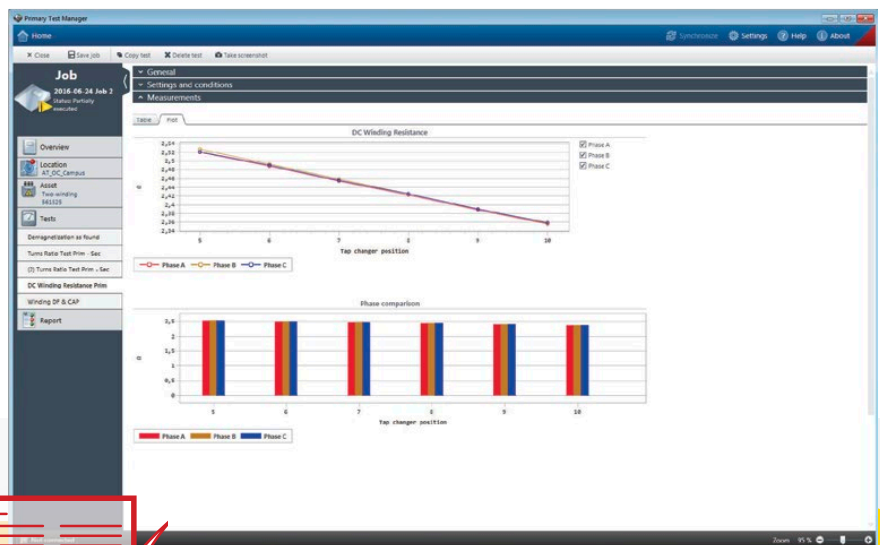
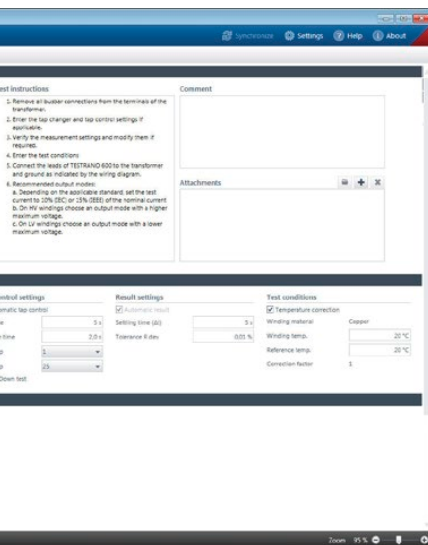
Comparison tools for detailed analysis

The measurement result can be visualized in tables and plots for easy review and assessment. Additionally, they can be compared with previous results and historical trends, allowing further in-depth analysis.

Customized, individual reports

PTM automatically generates reports including all asset-related information and performed tests. This gives you a comprehensive overview of the test object, test results and assessment.

You can easily adapt test reports, for example, by choosing from different types of result tables and diagrams and by providing comments on every test. Furthermore, you can incorporate your company logo, photos and other test results.



possible way during execution of diagnostic test-specific test plans according to

For a comprehensive analysis, PTM offers automatic result assessment and comparison as well as customized reporting.

Technical data and possible accessories

TESTRANO 600

Outputs

HV & LV outputs – power

Frequency	DC/1 mHz ... 599 Hz		
Power	V_{mains}	$P_{30\text{s}}$	$P_{\text{continuous}}$
	> 100 V_{RMS}	1500 W	1000 W
	> 190 V_{RMS}	4000 W	2400 W

HV & LV outputs – voltage

Source	Range	$I_{\text{max, continuous}}$	$I_{\text{max, 30s}}$
3-phase AC (RMS)	0 ... 230 V (LN)	300 mA	12 A
	0 ... 80 V (LN)	16 A	20 A
	0 ... 40 V (LN)	33 A	40 A
1-phase AC (RMS)	0 ... 240 V	16 A	20 A
	0 ... 120 V	33 A	40 A
3-phase DC	0 ... ±113 V	16 A	-
	0 ... ±56 V	33 A	-
1-phase DC	0 ... ±340 V	16 A	-
	0 ... ±170 V	33 A	-

HV & LV outputs – current

Source	Range	$V_{\text{max, continuous}}$
3-phase DC	0 ... ±33 A	56 V
	0 ... ±16 A	113 V
1-phase DC	0 ... ±100 A	56 V
	0 ... ±33 A	170 V
	0 ... ±50 A	113 V
	0 ... ±16 A	340 V
3-phase AC (RMS)	0 ... 33 A (LN)	40 V
	0 ... 16 A (LN)	80 V
1-phase AC (RMS)	0 ... 100 A	40 V
	0 ... 33 A	120 V
	0 ... 50 A	180 V
	0 ... 16 A	240 V

On-load tap changer input/output

Voltage	300 V_{RMS}
Accuracy AC (50 / 60 Hz) / DC	0.07 % rd + 0.07 % fs
Current clamp input	3 V_{RMS}
Tap up/down switch	Current ¹ : 300 mA _{continuous} 9 A for 0.7 s Voltage ¹ : 300 V_{RMS}

Inputs

HV & LV inputs – voltage²

Input	Range	Accuracy ³
AC (RMS)	0 ... 300 mV	0.01 % rd + 0.003 % fs
	0 ... 3 V	0.01 % rd + 0.003 % fs
	0 ... 30 V	0.01 % rd + 0.003 % fs
	0 ... 300 V	0.012 % rd + 0.003 % fs
DC	0 ... 42.4 mV	0.022 % rd + 0.032 % fs
	0 ... 424 mV	0.01 % rd + 0.017 % fs
	0 ... 4.24 V	0.007 % rd + 0.012 % fs
	0 ... 42.4 V	0.01 % rd + 0.017 % fs
	0 ... 424 V	0.007 % rd + 0.012 % fs

HV & LV inputs – current⁴

Input	Range	Accuracy ³
AC (RMS)	0 ... 0.4 A_{RMS}	0.017 % rd + 0.0033 % fs
	0 ... 4 A_{RMS}	0.036 % rd + 0.0033 % fs
	0 ... 40 A_{RMS}	0.023 % rd + 0.013 % fs
DC	0 ... 0.56 A_{DC}	0.1 % rd + 0.023 % fs
	0 ... 5.6 A_{DC}	0.037 % rd + 0.026 % fs
	0 ... 56 A_{DC}	0.008 % rd + 0.01 % fs

Combined values

DC resistance measurement

Current	Range	Accuracy ³
30 A_{DC}	1 ... 10 Ω	0.037 % rd + 0.017 % fs
	0.1 ... 1 Ω	0.04 % rd + 0.027 % fs
	0.01 ... 0.1 Ω	0.033 % rd + 0.017 % fs
	0.001 ... 0.01 Ω	0.037 % rd + 0.027 % fs
	0.0001 ... 0.001 Ω	0.05 % rd + 0.043 % fs
3 A_{DC}	10 ... 100 Ω	0.1 % rd + 0.18 % fs
	1 ... 10 Ω	0.1 % rd + 0.267 % fs
	0.1 ... 1 Ω	0.1 % rd + 0.18 % fs

Ratio measurement

Range	Accuracy ³
1:1 ... 10	0.03 % rd + 0.043 % fs
1:10 ... 100	0.027 % rd + 0.043 % fs
1:100 ... 1000	0.027 % rd + 0.043 % fs
1:1000 ... 10 000	0.027 % rd + 0.043 % fs

¹ Only AC permitted

² Typical phase accuracy at 50 / 60 Hz, $V > 30$ % of fs: 0.017°

³ Means "typical accuracy"; at typical temperatures of 23 °C ± 5 K; 98 % of all units have an accuracy which is better than specified

⁴ Typical phase accuracy at 50 / 60 Hz, $I > 30$ % of fs used range: 0.025°

⁵ From 2000 m to 5000 m altitude CAT III compliance only with half voltage

⁶ From 2000 m to 5000 m altitude only CAT II compliance or CAT III compliance with half voltage

⁷ Signals below 45 Hz with reduced values possible.

⁸ Recommended system requirements marked in bold

⁹ Graphics adapter supporting Microsoft® DirectX 9.0 or later is recommended.

¹⁰ Installed software required for the optional Microsoft Office® interface functions.



Power specifications

Voltage	Nominal: 100 V ... 240 V AC Permitted: 85 V ... 264 V AC
Frequency	Nominal: 50 Hz / 60 Hz Permitted: 45 Hz ... 65 Hz
Power fuse	Automatic circuit breaker with magnetic overcurrent tripping at I > 16 A
Power consumption	Continuous: < 3.5 kW Peak: < 5.0 kW

Environmental conditions

Temperature	Operating: -10 °C ... +55 °C / +14 °F ... +131 °F Storage: -30 °C ... +70 °C / -22 °F ... +158 °F
Relative humidity	5 % ... 95 %, non-condensing
Maximum altitude	Operating: 2000 m / 6550 ft, up to 5000 m / 16400 ft (with limited specifications ^{5,6}) Storage: 12000 m / 40000 ft

Mechanical data

Dimensions (W x H x D)	580 x 386 x 229 mm / 22.9 x 15.2 x 9.0 inch (W = 464 mm / 18.3 inch without handles)
Weight	Device with display: 20.6 kg / 45.5 lbs Device without display: 19.5 kg / 43 lbs

Equipment reliability

Shock	IEC / EN 60068-2-27, 15 g / 11 ms, half-sinusoid, each axis
Vibration	IEC / EN 60068-2-6, frequency range from 10 Hz to 150 Hz, continuous acceleration 2 g (20 m/s ² / 65 ft/s ²), 10 cycles per axis

CP TD 1

High-voltage output

U/f	I	S	t _{max}	f
0 ... 12 kV AC ⁷	300 mA	3600 VA	> 2 min.	15 Hz ... 400 Hz
0 ... 12 kV AC ⁷	100 mA	1200 VA	> 60 min.	15 Hz ... 400 Hz

Internal measurement of voltage output / current inputs

Range	Resolution	Accuracy	Conditions
0 ... 12000 V _{AC}	1 V	Error < 0.3 % of reading + 1 V	
0 ... 5 A _{AC}	5 digits	Error < 0.3 % of reading + 100 nA	I _x < 8 mA
	5 digits	Error < 0.5 % of reading	I _x > 8 mA

Capacitance Cp (equivalent parallel circuit)

Range	Resolution	Accuracy	Conditions
1 pF ... 3 μF	6 digits	Error < 0.05 % of reading + 0.1 pF	I _x < 8 mA, V _{test} = 300 V ... 10 kV
1 pF ... 3 μF	6 digits	Error < 0.2 % of reading	I _x > 8 mA, V _{test} = 300 V ... 10 kV

Power factor PF / dissipation factor DF

Range	Resolution	Accuracy	Conditions
0 ... 10 % (capacitive)	5 digits	Error < 0.1 % of reading + 0.005 %	f = 45 Hz ... 70 Hz, I < 8 mA, V _{test} = 300 V ... 10 kV
0 ... 100 % (PF) 0 ... 10000 % (DF)	5 digits	Error < 0.5 % of reading + 0.02 %	V _{test} = 300 V ... 10 kV

Primary Test Manager™



System requirements⁸

Operating system	Windows 10™, 64-bit Windows 8™ and 8.1™, 64-bit Windows 7™ SP1, 32-bit and 64-bit
CPU	Multicore system with 2 GHz or faster Single core system with 2GHz or faster
RAM	minimum 2 GB (4 GB)
Hard disk	minimum 4 GB of available space
Storage device	DVD-ROM drive
Graphics adapter	Super VGA (1280x768) or higher-resolution video adapter and monitor ⁹
Interface	Ethernet NIC
Installed software ¹⁰	Microsoft Office® 2016, Office® 2013, Office® 2010, Office® 2007, or Office® 2003

Ordering information

TESTRANO 600 Packages

	Description	Ordering No.
TESTRANO 600 Basic Package	<ul style="list-style-type: none">> Package for performing transformer turns ratio, DC winding resistance and demagnetization> Primary Test Manager™ Standard: PC software including Manual Control Mode and report generator	VE000701
TESTRANO 600 Standard Package	<ul style="list-style-type: none">> Package for performing transformer turns ratio, DC winding resistance, short-circuit impedance / leakage reactance, frequency response of stray losses (FRSL) and demagnetization> Primary Test Manager™ Standard: PC software including Manual Control Mode and report generator	VE000702
TESTRANO 600 Advanced Package	<ul style="list-style-type: none">> Package for performing transformer turns ratio, DC winding resistance, short-circuit impedance / leakage reactance, frequency response of stray losses (FRSL), demagnetization, power / dissipation factor and capacitance> CP TD1 and its accessories> Primary Test Manager™ Standard: PC software including Manual Control Mode and report generator	VE000703
TESTRANO 600 Universal Package	<ul style="list-style-type: none">> Package for performing transformer turns ratio, DC winding resistance, short-circuit impedance / leakage reactance, frequency response of stray losses (FRSL), demagnetization, power / dissipation factor and capacitance as well as dynamic resistance measurement (DRM)> CP TD1 and its accessories> Primary Test Manager™ Standard: PC software including Manual Control Mode and report generator	VE000704

TESTRANO 600 Advanced Control Options

	Description	Ordering No.
TESTRANO 600 TouchControl	TESTRANO 600 TouchControl featuring an integrated 10.6" color touch display	VEHO0700
PTM Advanced for TESTRANO 600	License for PC software upgrade adding Guided Workflow, customized test plans, automatic assessment, graphical comparison and trending	VESM0703

TESTRANO 600 Upgrade Options and Accessories

	Description	Ordering No.
"Short-Circuit Impedance / Leakage Reactance" Module	Software license upgrade to perform short-circuit impedance / leakage reactance tests and frequency response of stray losses (FRSL)	VE000701
"OLTC Scan and Transient Recording" Module	Software license upgrade to perform dynamic resistance measurements (DRM) on on-load tap changers	VE000702
CP TD 1 Upgrade Option	Upgrade option to expand your existing TESTRANO 600 to a power / dissipation factor test system	VE000641
TESTRANO 600 HV Cable Extension Package	6 m / 19.7 ft extension package for HV cables for large power transformers	VEHK0704
TESTRANO 600 LV Cable Extension Package	6 m / 19.7 ft extension package for LV cables for large power transformers	VEHK0705
Warning Lamp Set	Warning strobe with connection cable (15 m / 49 ft)	VEHZ0611
Remote Emergency Switch	3-position remote emergency switch, with connection cable (15 m / 49 ft)	VEHZ0688
Safety Box SAB1	Safety box with remote emergency switch, start button and LED indicators, connection cable (6 m / 19.7 ft)	VEHZ0812
TESTRANO 600 Transport Case for Accessories	Transport case with wheels for TESTRANO 600 accessories	VEHP0076

Find detailed ordering information and package descriptions on www.omicronenergy.com.



TESTRANO 600 Advanced Package

A strong and safe connection

Welcome to the team

At OMICRON you can always depend on an experienced team that actively supports you and an infrastructure that you can rely on. We always listen attentively in order to understand your needs so that we can offer you the best possible solutions. We strive for lasting partnerships and ensure that you can continue to rely on your product long after you've purchased it. In order to do this, we focus on quality, the transfer of knowledge and unique customer support.

Don, Wenyu and Christoph are able to tell you about the services we have available for you and why it pays to be part of the team.



Don Platts
Application Specialist

Solutions you can rely on...

... developed with experience, passion and an innovative approach that we use to continually set groundbreaking standards in our industry sector.

We invest more than 15 % of the total turnover in research and development so that we can even guarantee the reliable use of the latest technology and methods in the future.

Our comprehensive product care concept also guarantees that your investment in our solutions – like free software updates – pays off in the long term.





Wenyu Guo
OMICRON Academy



We share our knowledge...

... by maintaining a constant dialogue with users and experts. Some examples of this are our customer events and conferences that take place all over the world and our collaboration with numerous standardization committees.

We also make our knowledge available to you in the customer section of our website in the form of application reports, specialized articles and articles in the discussion forum. With the OMICRON Academy, we also provide a wide spectrum of training possibilities and assist you with Start-up training and free webinars.



Christoph Engelen
Technical Support

24/7 support

When rapid assistance is required...

... our excellent level of support is always appreciated. You can reach the highly-qualified and committed technicians in our customer support department 24 hours a day, seven days a week – and it's completely free. We deal with repair services and service features in a fair and non-bureaucratic manner.

We can help minimize your downtime by lending you equipment from a readily available plant at one of our service centers in your area. A comprehensive offer of services for consulting, testing and diagnostics completes our range of services.

OMICRON is an international company serving the electrical power industry with innovative testing and diagnostic solutions. The application of OMICRON products allows users to assess the condition of the primary and secondary equipment on their systems with complete confidence. Services offered in the area of consulting, commissioning, testing, diagnosis and training make the product range complete.

Customers in more than 140 countries rely on the company's ability to supply leading-edge technology of excellent quality. Service centers on all continents provide a broad base of knowledge and extraordinary customer support. All of this together with our strong network of sales partners is what has made our company a market leader in the electrical power industry.

For more information, additional literature, and detailed contact information of our worldwide offices please visit our website.