



Datasheet: OptiView XG Network Analysis Tablet - Overview and General Information

The OptiView® XG is the first tablet specifically designed for the network engineer. It automates root-cause analysis of wired and wireless network and application problems allowing the user to spend less time on troubleshooting and more time on other initiatives. It is designed to support the deployment and troubleshooting of new technologies, including unified communications, virtualization, wireless and 10 Gbps Ethernet. The result is that new initiatives get up and running faster and networks stay productive even in these days of smaller teams.



Core capabilities

- **Network Analysis** – Automated discovery, monitoring, analysis and guided troubleshooting of your network infrastructure
- **Traffic and Packet Analysis** – The ONLY tablet with 10 Gbps "On the wire" analysis
- **Wireless Analysis** – Integrated tools for deployment and troubleshooting of 802.11a/b/g/n WLANs
- **Performance Testing** – Conduct network assessments, validate new infrastructure and devices, test service provider SLAs, and troubleshoot problems from end to end, at up to a full line-rate of 10 Gbps

For detailed information about each one of these core capabilities, see additional data sheets.

The Tablet for Network Engineers

The OptiView XG's unique tablet form factor provides the mobility to connect, analyze and troubleshoot anywhere in the network – at the desk, in the data center, or at the end user location. It can quickly analyze the performance and health of devices, interfaces and paths on your network—which moves beyond traditional LAN/WAN switching and routing to a true network fabric that incorporates heterogeneous physical devices, wireless networks, virtualized servers and networks.

- Integrates the latest wired and wireless technologies with powerful dedicated hardware in a unique tablet form factor providing mobility to connect, analyze and solve network and application problems anywhere on the network
- Displays your network exactly the way you want to see it through intuitive, customizable dashboards
- Provides performance testing, 'on-the-wire' and 'in-the-air' automated analysis up to 10 Gbps
- Enables proactive analysis by analyzing the information you need before problems arise
- Out-of-the-box and customizable reports

Network Analysis

For further information, [see detailed data sheet](#)

- Real-time discovery engine finds and tracks up to 30,000 devices – hosts, phones, switches, routers, access points, servers and more
- Unique Path Analysis provides graphical view of the path between a user and application resources (local, remote, or cloud-based) and visually indicates performance data or problems on critical links and devices along the path
- Allows visibility of intermittent problems by collecting and monitoring granular data rather than the aggregated data collected by typical network management systems
- Automatically detects problems in the network and suggests resolution procedures
- Measure performance of your VMware® environment, including hypervisor availability, interface utilization, and resource usage levels
- Real-time NetFlow data finds bandwidth hogs



Traffic and Packet Analysis

For further information, [see detailed data sheet](#)

- Ensures line-rate packet capture up to 10 Gbps for troubleshooting difficult application problems
- Performs application-centric analysis with a high-level view of the applications on the network with easy drill down capability
- Real-time traffic analysis shows top hosts, top conversations, top protocols – who is using your bandwidth
- Go directly in-line (up to 1 Gbps) to observe traffic in real-time or capture at line rate without the need of an external tap



Wireless Analysis

For further information, [see detailed data sheet](#)

- Enables analysis of the WLAN environment using the award-winning AirMagnet WiFi Analyzer, Spectrum XT, Survey and Planning tools
- Find rogue clients and access points that could be jeopardizing the security of your network
- Identify and find sources of RF interference that impact the performance of your WLAN
- Quickly troubleshoot WLAN performance issues – configuration problems, co-channel interference, slow clients
- Discovery and querying of wireless LAN controllers provides information about wireless networks across your enterprise



Performance Testing

For further information, [see detailed data sheet](#)

- Test service provider SLAs, troubleshoot network bottlenecks, validate new architectures, and assess networks for new technology or application deployments
- Measures end-to-end network performance in terms of bandwidth, latency, jitter, loss and availability up to 10 Gbps
- Testing at operational speeds (less than line-rate) in conjunction with Path Analysis reveals network bottlenecks
- Class-of-Service testing and multiple test streams (up to 8 simultaneous) ensures availability and performance of QoS throughout your network, and whether carrier links are supporting QoS



Innovative Design and Powerful Custom Hardware Speeds the Job of Network Engineers

Tablet Form Factor

OptiView XG provides a wide range of functionality to adapt to the dynamic and diverse networks of today, in a convenient tablet for use anywhere in the network. It is the only tool that provides the capabilities to analyze and troubleshoot applications, wired networks (1 GbE, 10 GbE) and wireless networks (802.11a/b/g/n) from the perspective of either remote or local users. The unique tablet form factor designed specifically for network engineers provides the mobility to troubleshoot anywhere in the network, from the engineer's desk, in the data center or at the end-user location.

Key Features

Portable - The XG is extremely portable. It is 14 inches (36 cm) measured diagonally. At just under 6 pounds (2.5kg) and 2 inches (5 cm) thin, the XG can be used anywhere.

Multiple wireless adapters - The XG has two Wi-Fi adapters and one spectrum adapter built-in. The multiple adapters along with the portability make WLAN analysis and troubleshooting easy as you do not need to swap adapters or have extra external hardware.

High-resolution display - A large, 10.25 inch high-resolution 1024x728 LCD display is remarkably crisp and vivid making it perfect for viewing and analyzing large amounts of data at once.

Extendable 2 hours of battery life - The XG can be used for up to 4 hours on the battery for wired and wireless analysis (or 2 hours for wired AND wireless analysis). The batteries are hot swappable which means the XG can be used for a much longer time without losing data.

Connectivity - The XG supports 10 Gbps and 1 Gbps fiber, 10/100M and 1 Gbps dual-port copper and 802.11a/b/g/n WLAN.

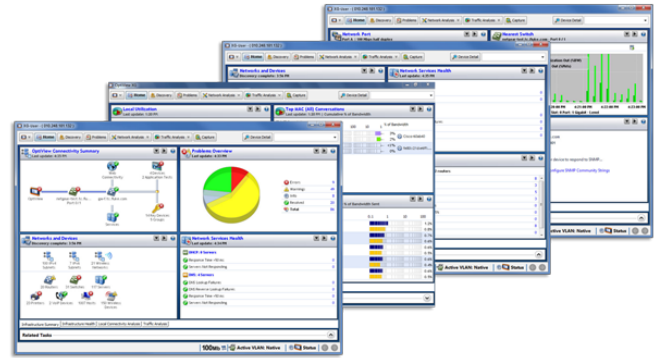
Performance - The XG runs Windows® 7 (64-bit, SP1) with 4 GB of RAM. It has a 128 GB solid state removable drive. The XG obtains its processing power from an Intel® Core™ Duo 1.2 GHz processor. The XG is capable of 10 Gbps full line-rate capture and has a 4 GB dedicated capture buffer.



Intuitive User Interface with Customizable Dashboards, Smart Navigation and Easy Reporting

User Configurable Dashboards

Present the relevant data to the right audience. OptiView XG has extensively customizable dashboards that transform collected data into an actionable presentation. The dashboard can be customized for a particular user or for the entire enterprise. Create dashboards for keeping an eye on network and applications by site or even by business function. Save and export them to different members of your team. The dashboard provides an at-a-glance overview of the current status of your network with critical metrics from routers, switches, firewalls, servers, services, and other infrastructure devices. Even remote users can set up dashboards to get their own view of network operations.

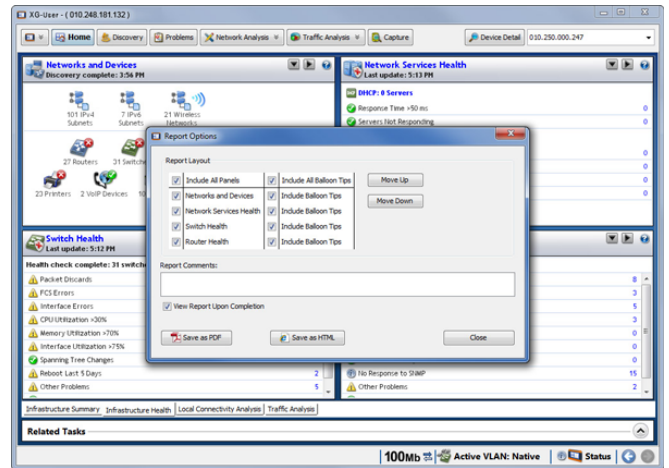


Customizable Dashboards

Network and Application Issue Reporting Engine

OptiView XG offers a number of built-in reports, making it quick and easy to report on application and network problems. While viewing a screen, press the Reports key to generate HTML or PDF reports on protocols, top hosts, top conversations, devices, networks, problems and many more.

Customize out-of-the-box reports and create completely customized reports using the configurable dashboards in just a few clicks. The ability to choose what data to populate in a report enables users to quickly see the information needed. You can even create reports for specific user profiles, making it easy to generate reports for specific departments or recipients.



Customizable Reporting

Problem Alerting and Notification – SNMP Trap and Syslog Messages

OptiView XG scans the entire network infrastructure, identifying issues and bringing them to your attention. When problems are discovered, XG utilizes the on-board Windows Event Log, SNMP service and syslog agent to send problem notifications to the user's network management system (via SNMP Traps or syslog messages), where they can be routed to the appropriate technician.

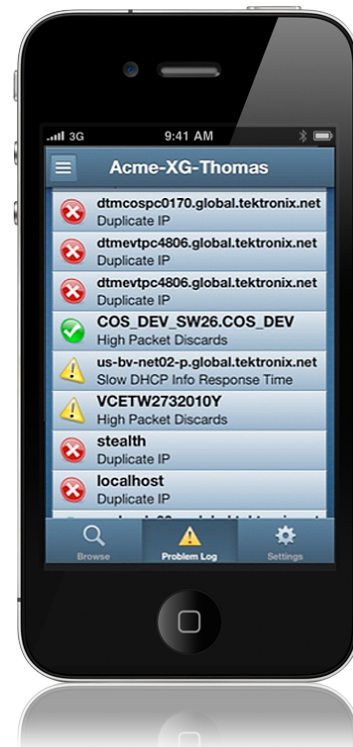
Problem Alerting and Notification – HeadsUp™ XG Mobile App

NEW in Version 10!

With the new HeadsUp XG mobile app for Apple iOS (available free via the Apple iStore), you get real-time notifications from your OptiView XG tablet(s). Instant notification means you're always "in touch" with your network, and seeing critical problems even before users start calling the help desk!

Use HeadsUp XG to browse your OptiView XG units, and drill down into problems on the Problem Log. The affected devices and specific problems are reported, along with the severity of the problem (Error, Warning, Info) and time detected. Problems that have been resolved are also indicated, and the time the resolution was detected. The app also includes a detailed Help file, or onboard "expert", providing background information about the type of problem, how it can be caused and what can be done to resolve it. Having visibility of problems in the palm of your hand allows you to react more quickly when problems occur, and help you decide whether the particular problem is a "red alert" or something that can wait, helping you manage your time more effectively. Multiple users can use HeadsUp XG to access and get notifications from your XG(s).

You can "clear" problems on the XG remotely from your iPhone or iPad, and through the app's synchronization capability, the problems are cleared on the XG simultaneously, and vice versa – problems cleared on the XG are automatically cleared on your handheld device.

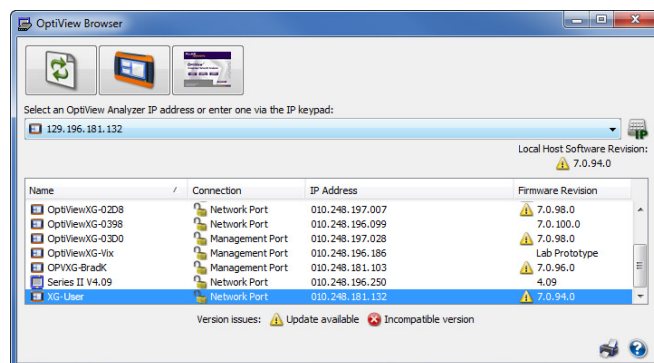


HeadsUp XG app for iOS

Remote User Interface and Access

Simply point a web browser at the IP address of a correctly configured OptiView XG tablet to retrieve saved reports and capture files. You can also install a remote User Interface (UI) and use your PC to remotely access an OptiView XG over a TCP connection. Once the remote UI is installed, simply give the interface the IP address of the OptiView XG and see the default dashboards. You can then create your own remote dashboards to get your own view of the network.

Communication between the OptiView XG and remote UI can be encrypted. A single portable OptiView XG supports thirty-two remote sessions on a PC to provide a remote "NOC" view. The OptiView XG features a separate management port for "out-of-band management" independent of the network under test port. When using the remote interface, all dashboards created are stored on the user's PC, allowing further customization for each remote user.



Remote User Interface - OptiView Browser

User Accounts

Add and modify security information for each individual OptiView XG user to prevent unauthorized use of certain features for compliance with regulatory requirements or internal policies. For example, this allows users access to powerful troubleshooting features such as SNMP, while keeping the community strings hidden. Features that can be disabled include packet capture and decode, traffic generation, remote user interface and OptiView XG configuration.

Context Sensitive Help

Help is contextually linked to each screen in the OptiView XG. While the help screen is displayed, you may select other information from the table of contents, choose an index entry, or perform a full text search on any help topic or term.

Removable Hard Drive

Essential for use on classified networks, this feature ensures any sensitive data stored on your network analyzer's hard drive never leaves that environment. Network information discovered by the OptiView XG tablet is stored on the removable hard drive, allowing the OptiView XG to be moved between classified environments and between classified and unclassified systems by simply removing and replacing the hard drive. Extra, pre-configured drives are available (spare drives are pre-configured with Windows 7 OS and OptiView operating software).

Included with OptiView XG Network Analysis Tablet:



- Leather carrying case with extra storage
- Shoulder and hand straps
- AC adapter/charger
- Stylus
- Getting Started Guide
- USB memory stick
- 1 m (6') shielded twisted-pair patch cord
- Internal removable hard drive

The OptiView XG tablet with wireless (WL, PRO, PLUS and EXPT models) ship with one external, directional wireless antenna with mounting hardware and one omnidirectional antenna (not shown).

General Specifications

Physical Specifications

| | |
|------------|--|
| Dimensions | (H,W,D) 9.45" x 12.43" x 2.03" (240 mm x 315.7 mm x 51.6 mm) |
| Weight | 5.6 lb. (2.5 kg) with batteries; 4.5 lb. (1.8 kg) without batteries |
| Display | Color active matrix TFT LCD, 1024 x 768 pixels, LED backlight, touch panel with 2 touch points |
| Security | Kensington® security slot on rear panel for connection of security cable |

Environmental Specifications

| | |
|------------------------|--|
| Operating Temperature* | 10°C to 30°C (50°F to 86°F) with up to 95% Relative Humidity. 0°C to 50°C (32°F to 122°F) with up to 75% Relative Humidity |
| Storage Temperature | -40°F to +160°F (-40°C to +71°C) |
| Shock and Vibration | Meets requirements of MIL-PRF-28800F for Class 3 equipment |
| Safety | EN 61010-1 2nd Edition |
| Altitude** | 4600 m (15000 ft) on batteries |

Electrical Specifications

| | |
|------------------------|--|
| AC Adapter Input | 100 V – 240 V, 50/60 Hz, 1.5 A |
| AC Adapter Output | 19 VDC, 4.74 A, 90 W |
| Battery* | Two user-replaceable, rechargeable, 45 Watt-hour, lithium-ion battery packs. |
| Battery Operating Time | 2 hr. (typical - can be extended to approximately four hours by disabling/powering down the network under test ports for doing extended WLAN analysis) |
| Battery Charge Time* | 3 hr. (typical). Charge time depends on residual battery charge |

System Specifications

| | |
|------------------|---|
| Operating System | Window 7 Professional, 64 Bit, Service Pack 1 |
| PC - Processor | Intel® Core™ Duo CPU U9300 @ 1.2GHz |
| PC - RAM | 4 GB |
| Capture Buffer | 4 GB |

* Battery charging is disabled when internal temperature rises above 113°F (45°C).

** Altitude specification applies to OptiView XG and batteries. Maximum altitude for AC adapter is 2000 m (6,600 ft.).

Wired Network Connection Specifications

| Ports | |
|--------------------------|---|
| Network Analysis Ports | 2 RJ-45 10/100/1000BASE-T Ethernet, Small form-factor pluggable (SFP) 100/1000BASE-X Ethernet, enhanced small form-factor pluggable (SFP+) 10GBASE-X Ethernet |
| Management Port | RJ-45 10/100/1000BASE-T Ethernet |
| Supported SFP Modules | 1000BASE-SX - 850 nm (Standard) |
| | 100BASE-FX - 1300 nm |
| | 1000BASE-LX - 1310 nm |
| | 1000BASE-ZX - 1550 nm |
| Supported SFP+ Modules | 10GBASE-SR - 850 nm (Standard) |
| | 10GBASE-LR - 1310 nm |
| | 10GBASE-LRM - 1310 nm |
| Fault Tolerance | RJ-45 Ports are designed to withstand a maximum of 100 volts |
| USB Ports | Three USB 2.0 ports |
| eSATA Port | eSATA port for connecting external hard drive |
| Video Port | Standard VGA port for connection to monitor or projector |
| Cables | |
| Cable Types | 100 Ohm UTP and ScTP category 5, 5E, 6, ISO/IEC Class C, D, E |
| Cable Length Measurement | Measurable cable lengths are from 3 feet (0.9 meters) to 500 feet (152 meters) |
| | Accuracy: ± 6 feet (± 2 meters) |
| | Length measurement is based on Nominal Velocity of Propagation (NVP) for selected cable type |

Wireless Network Connection Specifications

Wireless Antennas

| | |
|-----------------------------------|---|
| Internal Wireless Antennas | Seven internal 2.4 GHz, 1.1 dBi peak, 5 GHz, |
| | 3.2 dBi peak antennas |
| External Omni-directional Antenna | Antenna, WLAN, omnidirectional, 2.4 & 5 GHz |
| | 802.11 A/B/G, 50 Ω. Gain: 2.1 dBi (2.45 GHz) |
| | 2.4 dBi (4.9 GHz), 2.6 dBi (5.25 GHz), 2.5 dBi (5.875 GHz) |
| External Directional Antenna | Antenna, frequency range 2.4 - 2.5 and 4.9 - 5.9 GHz |
| | Minimum gain 5.0 dBi peak in the 2.4 GHz band, and 7.0 dBi peak in the 5 GHz band |
| External Antenna Connector | Reverse SMA |

Wireless Adapters

| | |
|--|---|
| Data Rate | 11a: 6/9/12/24/36/48/54 Mbps |
| | 11b: 1/2/5.5/11 Mbps |
| | 11g: 6/9/12/24/36/48/54 Mbps |
| | 11n (20 MHz): MCS0-23, up to 216 Mbps |
| | 11n (40 MHz): MCS0-23, up to 450 Mbps |
| Operating Frequency | 2.4000 ~ 2.472 GHz (Industrial Scientific Medical Band) 5.180 ~ 5.825 GHz |
| Security | 64/128-Bit WEP Key, WPA, WPA2, 802.1x |
| Transmit Output Power (Tolerance: ±1.5 dBm) | 802.11b: 18 dBm |
| | 802.11b: 18 dBm |
| | 802.11g: 17 dBm |
| | 802.11a: 11 dBm |
| | 802.11n: 2.4 GHz: 17 dBm |
| | 802.11n: 5 GHz: 13 dBm |
| Receive Sensitivity (Tolerance: ±2 dBm) | 802.11a: 10% PER -78 dBm |
| | 802.11b: 8% PER -90 dBm |
| | 802.11g: 10% PER -80 dBm |
| | 802.11n: 2.4 GHz 10% PER |
| | -72 dBm@HT20 |
| | -70 dBm@HT40 |
| | 802.11n: 5 GHz 10% PER |
| | -70 dBm@HT20 |
| | -63 dBm@HT40 |
| Power Consumption (Typical) | Transmitting (Legacy mode, HT20 mode): 870 mA @5 GHz, 700 mA @2.4 GHz |
| | Transmitting (HT40 mode): 900 mA @5 GHz, 750 mA @2.4 GHz |
| | Receiving (Legacy mode, HT20 mode): 550 mA @5 GHz, 520 mA @2.4 GHz |
| | Receiving (HT40 mode): 610 mA @5 GHz, 600 mA @2.4 GHz |

Standards and Compliance Specifications

Supported Network Standards

| | |
|--|---|
| IEEE 10BASE-TX, IEEE 100BASE-TX, IEEE 1000BASE-TX, IEEE 1000BASE-X, IEEE 10GBASE-X | RFCs: 1213, 1239, 1285, 1512, 1513, 1643, 2108, 2115, 2127, 2515, 2819, 3592, 3895, 3896, 4188, 4502 |
|--|---|

Compliance Statements

| | |
|------------|--|
| EMC | Complies with IEC/EN61326-1:2006, class A |
| Safety | Complies with IEC/EN 61010-1:2001, CAN/CSA C22.2 No. 61010-1-04, ANSI/UL 61010-1:2004, EN/IEC 60825-1:2007, EN/IEC 60825-2:2004+ A1:2007 |
| Telephone* | The OptiView XG is NOT designed for connection to a telephone network |
| | The OptiView XG is NOT designed for connection to an ISDN line |

*Note: Do not connect to a telephone network or ISDN line except through a regulatory agency compliant computer network modem device.

Models*

| Product Noun | Description |
|----------------|---|
| OPVXG | **OptiView XG – Network Analysis Tablet, 1 Gbps |
| OPVXG-LAN | OptiView XG – Network Analysis Tablet, 1 Gbps, wired only |
| OPVXG-10G | **OptiView XG – Network Analysis Tablet, 10 Gbps |
| OPVXG-LAN-10G | OptiView XG – Network Analysis Tablet, 10 Gbps, wired only |
| OPVXG-PRO | **OptiView XG – Network Analysis Tablet, 1 Gbps with AirMagnet WiFi Analyzer and Spectrum XT |
| OPVXG-PROPLUS | **OptiView XG – Network Analysis Tablet with All WLAN Options |
| OPVXG-EXPT | **OptiView XG – Network Analysis Tablet, 10 Gbps with AirMagnet WiFi Analyzer and Spectrum XT |
| OPVXG-EXPTPLUS | **OptiView XG – Network Analysis Tablet, 10G with All WLAN Options |

*Additional models, bundles, accessories and options are available. Go to www.flukenetworks.com/xg for details

**For sale only in countries where the XG wireless is certified.

Fluke Networks Gold Support

Our support plans give you exclusive services and 24/7 technical assistance. Sign up for our Gold Support plan and you'll enjoy outstanding privileges to protect and add value to your investment in Fluke Networks equipment. They include unlimited technical assistance seven days a week, 24 hours a day via phone or at our web support center. Repairs on covered items and "next day" dispatched loaner units for uninterrupted service. Free software upgrades. Scheduled annual performance verification service. Web based training. Access to our extensive Knowledge Base library of operation and application related technical articles. And Gold "Members Only" special prices and promotions. Some benefits are not available in all countries.

See www.flukenetworks.com/goldsupport for more information.

For more information about OptiView XG, visit www.flukenetworks.com/xg